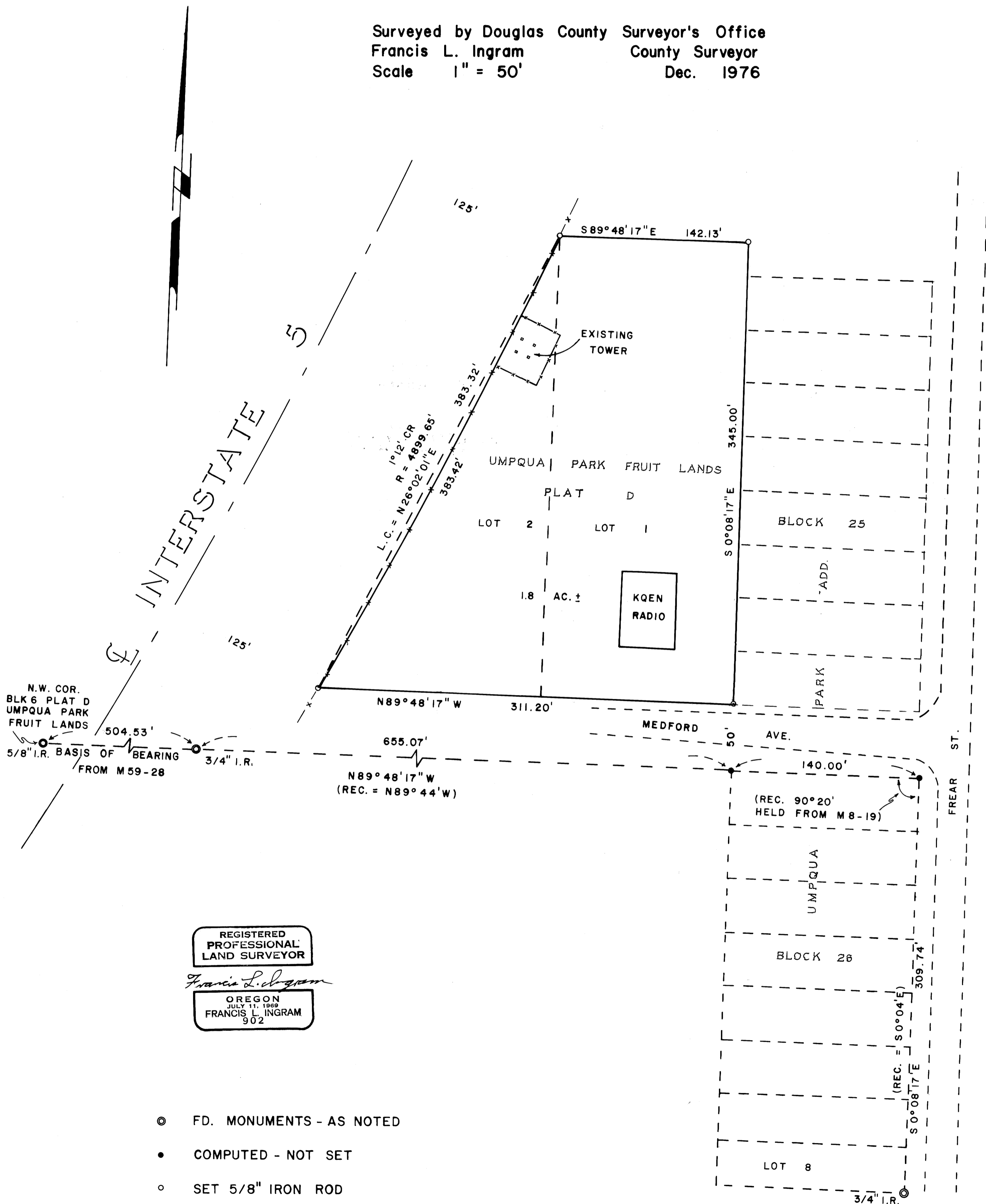


SURVEY FOR DOUGLAS COUNTY  
 IN LOTS 1 & 2 BLOCK 5 PLAT D  
 UMPQUA PARK FRUIT LANDS  
 SEC. 25, T. 27 S., R. 6 W., W.M.

Surveyed by Douglas County Surveyor's Office  
 Francis L. Ingram County Surveyor  
 Scale 1" = 50' Dec. 1976



REGISTERED  
 PROFESSIONAL  
 LAND SURVEYOR  
*Francis L. Ingram*  
 OREGON  
 JULY 11, 1969  
 FRANCIS L. INGRAM  
 902

- ⊙ FD. MONUMENTS - AS NOTED
- COMPUTED - NOT SET
- SET 5/8" IRON ROD

1 FT. = 0.3048006 METER

CS FILE FOLDER

CONTAINS

MORE

INFORMATION