

MAP FILE M 62-54

COUNTY SURVEYORS FILE DATA
DO NOT REMOVE FROM OFFICE

SURVEY IN SEC. 17, T22S, R5W, W.M.
DOUGLAS CO. ORE.

SURVEYED FOR - ELMER DUPPER
SURVEYED BY - W.S. BARNES

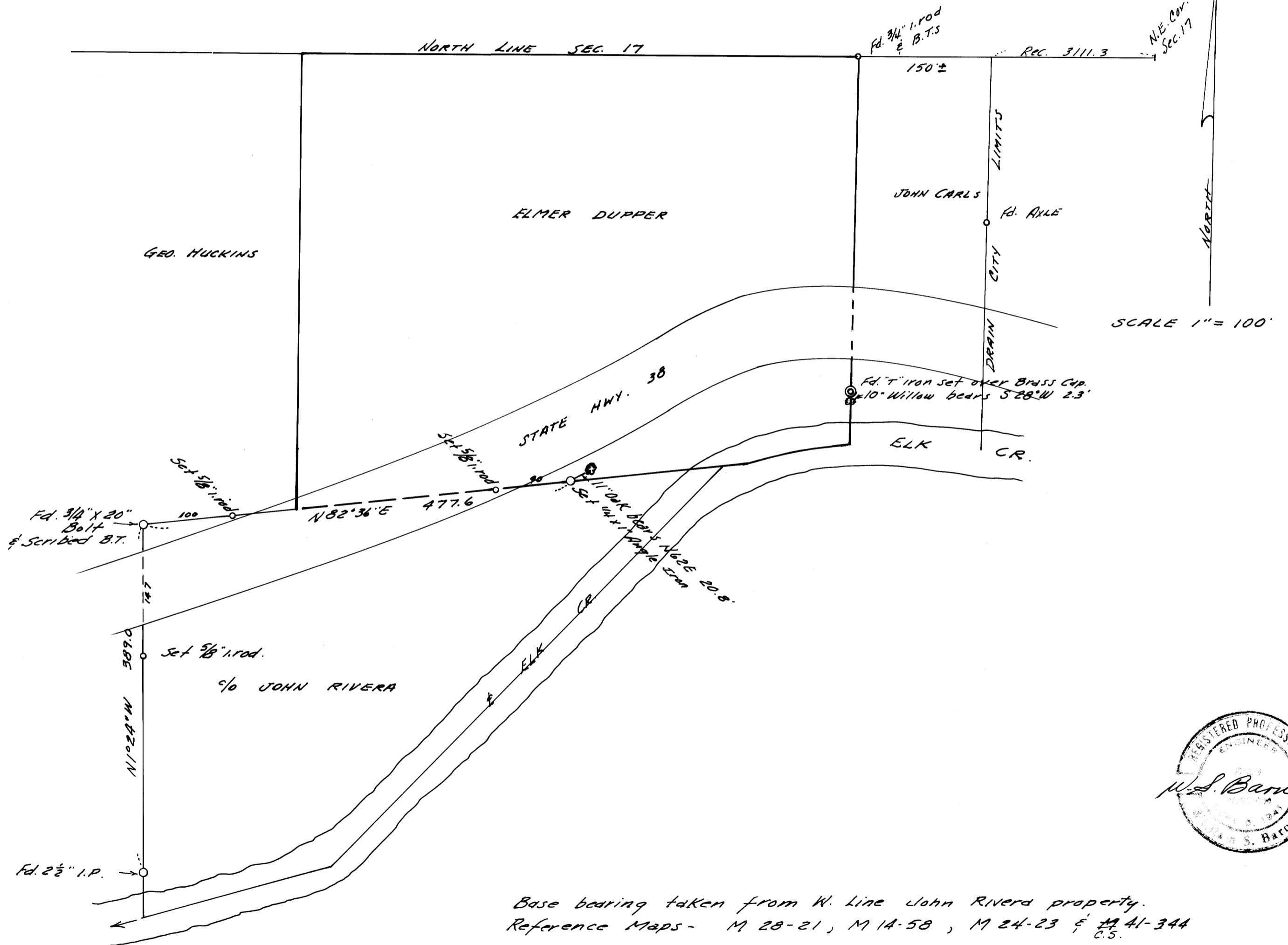
DEC. 1976

FILED
RECEIVED

DEC 27 1976

COUNTY SURVEYOR
DOUGLAS COUNTY, ORE.

2



Base bearing taken from W. Line John Rivera property.
Reference Maps - M 28-21, M 14-58, M 24-23 & M 41-344
C.S.

