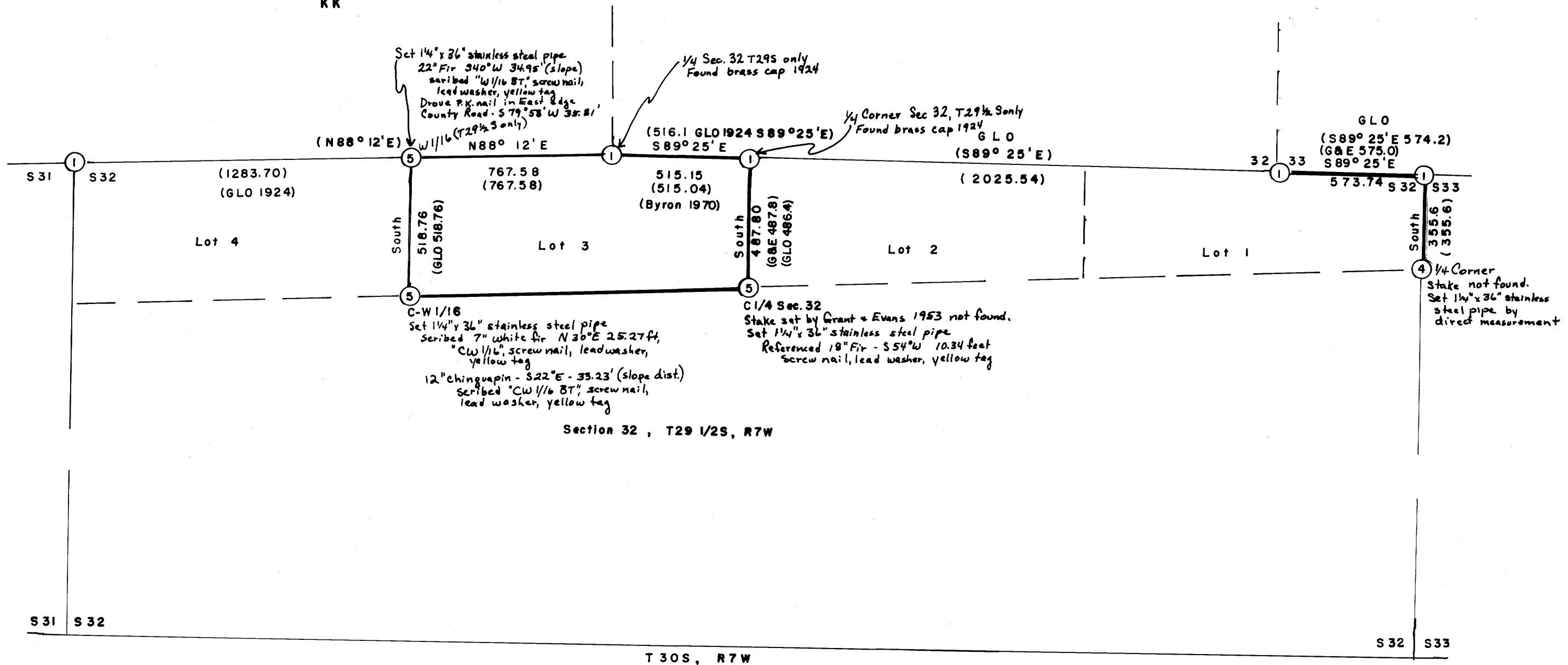


LONGVIEW FIBRE COMPANY

N 1/2 Section 32, T29 1/2S, R7W, W.M. DOUGLAS COUNTY, OREGON

FILED ✓
 RECEIVED 29
 DEC 27 1976
 COUNTY SURVEYOR
 DOUGLAS COUNTY, ORE.

SCALE 1" = 400'
 December 20, 1976
 kk



- ① Found brass caps and bearing trees restored by GLO 1924.
- ④ Corner re-established by Longview Fibre Company.
- ⑤ Subdivision corner established by Longview Fibre Company.

This survey is a retracement of the 1953 section subdivision survey (recorded) by Grant & Evens 1953, and the GLO resurvey and platting of 1928.

N
 ↑
 Bearings from north
 line of GLO Resurvey
 of 1928

Russell B. Bass
 1975
 RUSSELL B. BASS
 9130

MAP NO. 744

MAP FILE M.62-53

MAP FILE M.62-53