

COUNTY SURVEYORS FILE DATA  
DO NOT REMOVE FROM OFFICE

# LONGVIEW FIBRE COMPANY

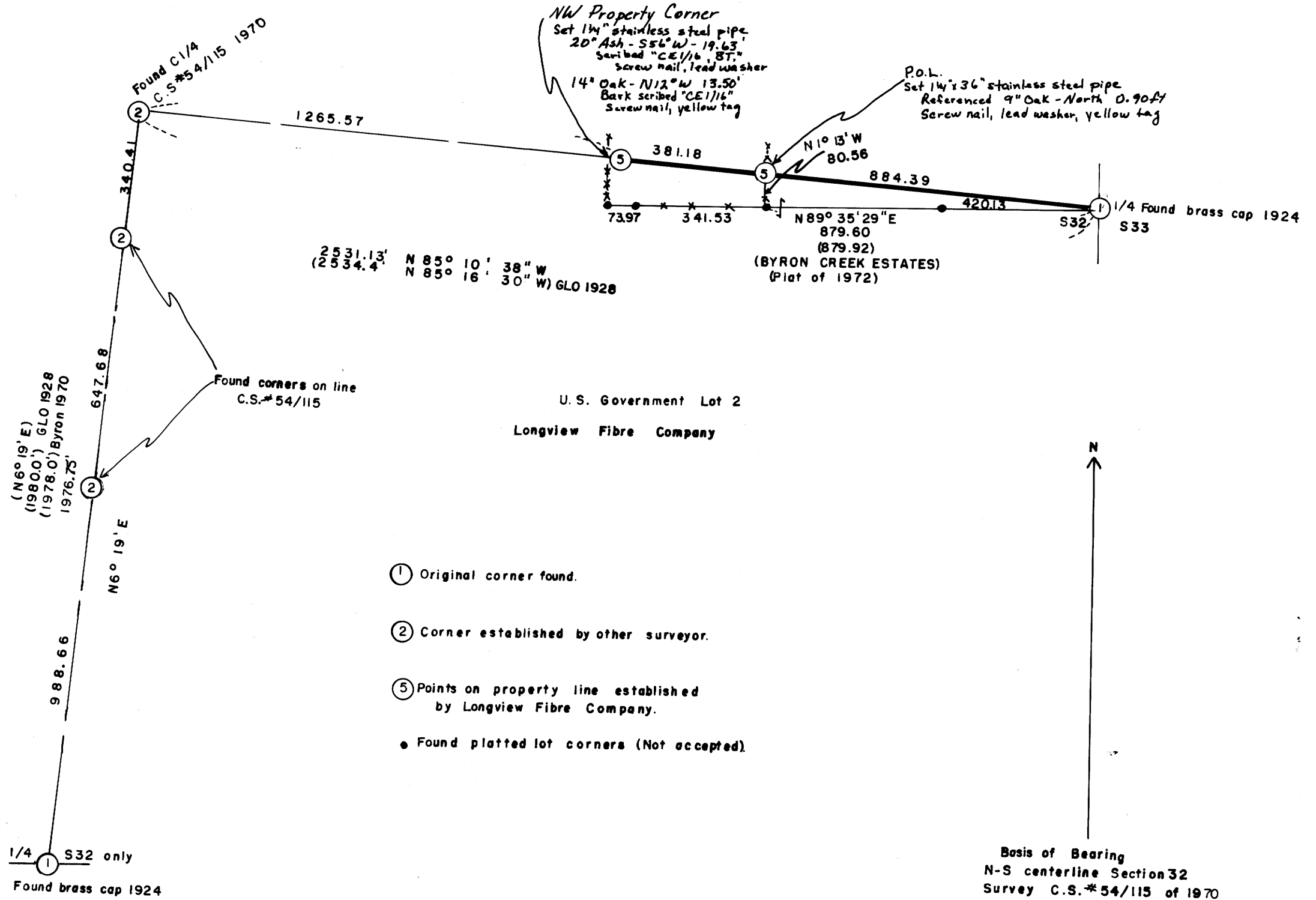
## SE1/4 Section 32, T29S, R7W, W.M.

### DOUGLAS COUNTY, OREGON

FILED ✓  
RECEIVED 29  
DEC 27 1976  
COUNTY SURVEYOR  
DOUGLAS COUNTY, ORE.  
j

MAP FILE M62-52

SCALE 1" = 300'  
December 20, 1976  
kk



RUSSELL B. BASS  
 COUNTY SURVEYOR  
 1965  
 RUSSELL B. BASS  
 9130

MAP NO. 743

MAP FILE M62-52