

**COUNTY SURVEYORS FILE DATA  
DO NOT REMOVE FROM OFFICE**

FILED ✓  
RECEIVED KR

DEC 21 1976

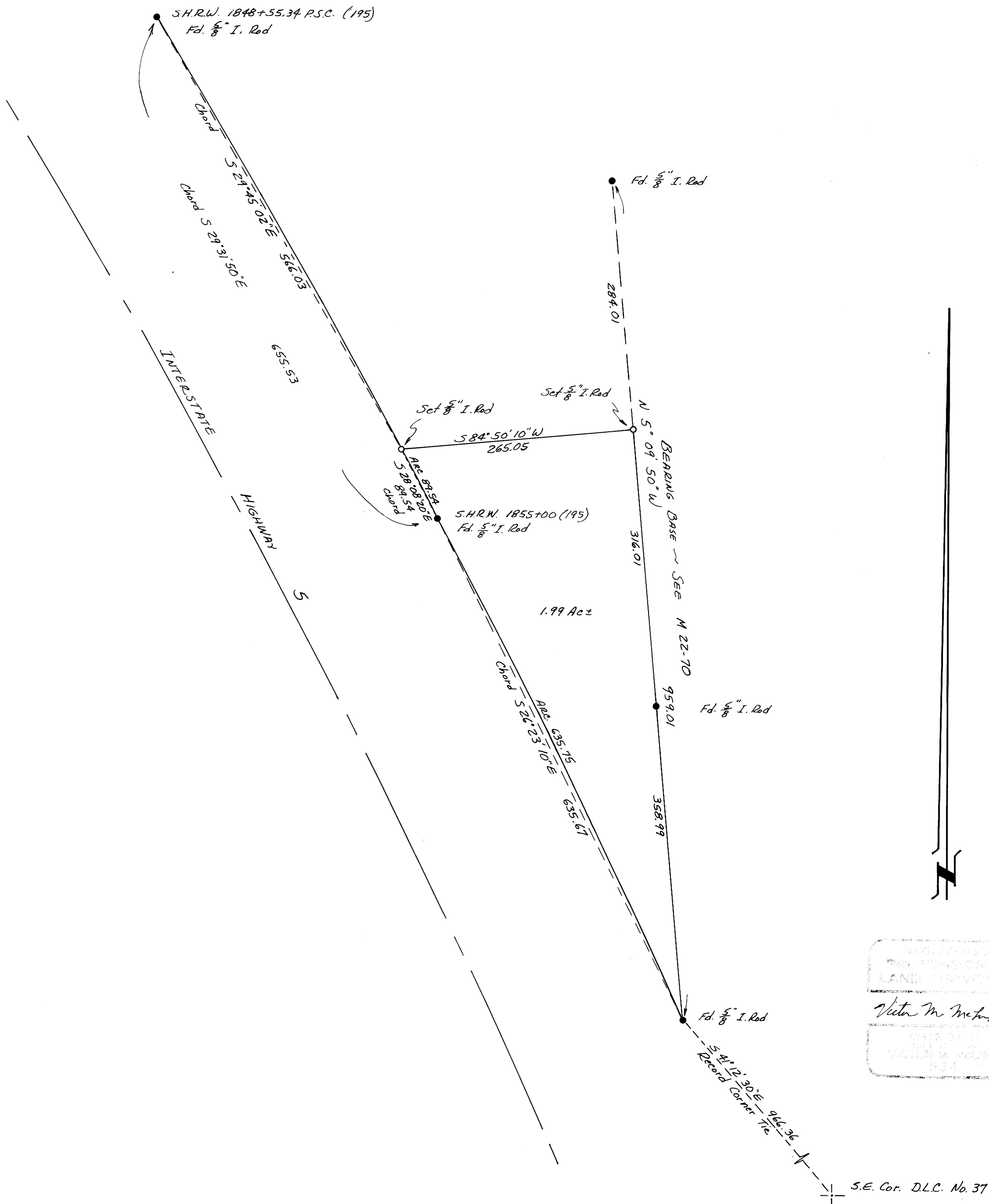
COUNTY SURVEYOR  
DOUGLAS COUNTY, ORE.

**SURVEY TO SET PROPERTY CORNERS  
IN SEC. 30, T25S, R5W, W.M. (D.L.C. NO. 37)**

Surveyed for Full Service Realty, Inc. by Victor M. Melind

Dec. 1976

Scale: 1"=100'



REGISTERED  
PROFESSIONAL  
LAND SURVEYOR  
Victor M. Melind  
D.L.C. No. 37