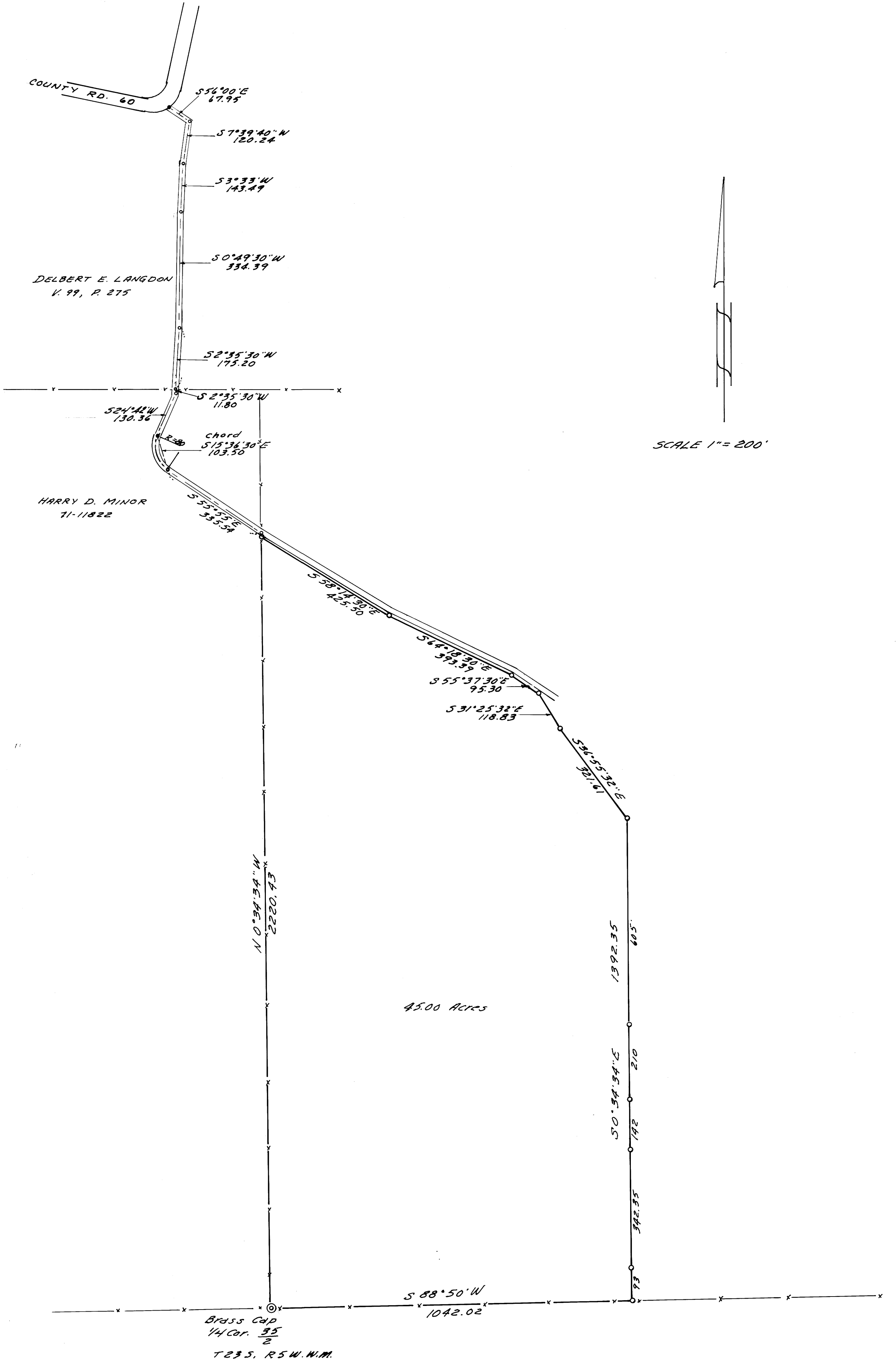


COUNTY SURVEYORS FILE DATA
DO NOT REMOVE FROM OFFICE

SURVEY FOR DEED DESCRIPTION
IN SEC. 35, T 23 S, R 5 W. W.M.

SURVEYED FOR - RAND OLSEN NOV. 1976
SURVEYED BY - W.S. BARNES

FILED ✓
RECEIVED ✓
DEC 30 1976
COUNTY SURVEYOR
DOUGLAS COUNTY, ORE.
✓



o Denotes 5/8" iron rods set
Base bearing taken from section line fence 35 2

