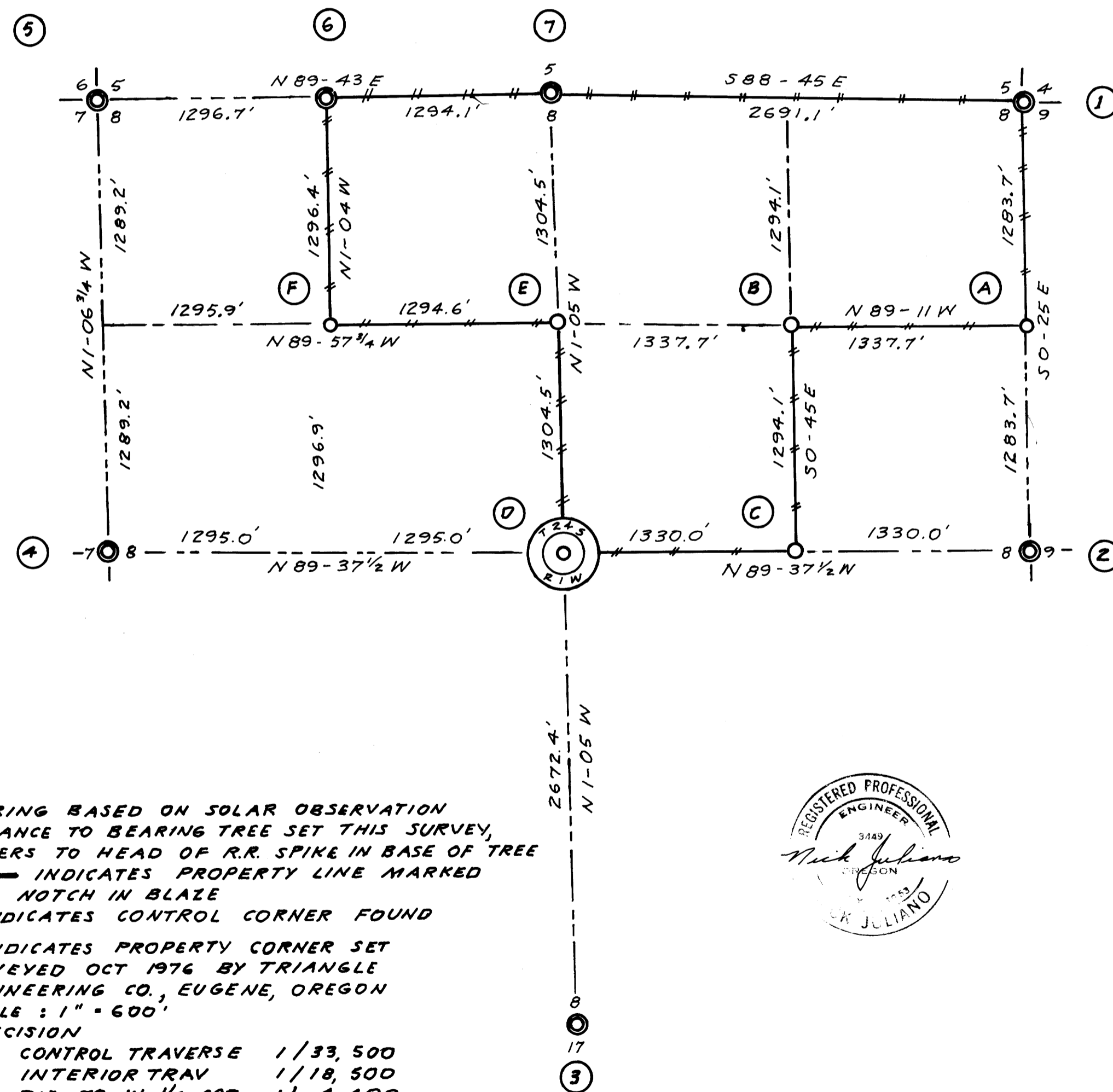


WEYERHAEUSER CO.
SURVEY
OF
SECTION 8, T24S, R1W, WM
DOUGLAS COUNTY, OREGON

CORNERS USED FOR CONTROL

WEYERHAEUSER COMPANY PROPERTY CORNERS SET



NOTES :

- (1) BEARING BASED ON SOLAR OBSERVATION
- (2) DISTANCE TO BEARING TREE SET THIS SURVEY, REFERS TO HEAD OF R.R. SPIKE IN BASE OF TREE
- (3) ——— INDICATES PROPERTY LINE MARKED WITH NOTCH IN BLAZE
- (4) ⊙ INDICATES CONTROL CORNER FOUND
- (5) ○ INDICATES PROPERTY CORNER SET
- (6) SURVEYED OCT 1976 BY TRIANGLE ENGINEERING CO., EUGENE, OREGON
- (7) SCALE : 1" = 600'
- (8) PRECISION
CONTROL TRAVERSE 1/33,500
INTERIOR TRAV 1/18,500
TIE TO W 1/4 COR 1/ 4,400
TIE TO E 1/4 COR 1/ 5,200
TIE TO S 1/4 COR 1/ 25,200



- ① **NORTHEAST SECTION CORNER**
FOUND A 2" IRON PIPE WITH A BLM BRASS CAP, 1963
A 26" FIR, N60E, 68 LKS, CLOSED FACE
A 20" S. PINE, S56 1/2 E, 93 LKS, SCRIBE VIS.
A 28" I. CEDAR, S43 W, 14 LKS, CLOSED FACE
A 36" S. PINE, N53 W, 117 LKS, CLOSED FACE
- ② **EAST 1/4 CORNER**
SET 3/4" IRON PIPE FROM ORIGINAL BEARING TREES BY DISTANCE ONLY
A 22" W. PINE, N46E, 110' TO HEAD OF R.R. SPIKE - ORIGINAL BT
A 22" FIR, S70W, 30.6' TO HEAD OF R.R. SPIKE - ORIGINAL BT
- ③ **SOUTH 1/4 CORNER**
FOUND A DOUGLAS CO. IRON PIPE WITH A BRASS CAP, 1961
A 30" FIR, S3 W, 21.8', CLOSED FACE
A 13" HEM, N65 W, 5.9', SCRIBE VIS.
- ④ **WEST 1/4 CORNER**
FOUND A DOUGLAS CO. IRON PIPE WITH A BRASS CAP, 1970
A 30" FIR, S52E, 19.1', CLOSED FACE
A 36" FIR, S64 W, 5.3', SCRIBE VIS.
A 10" HEM, N22 W, 8.6', SCRIBE VIS, CSBT
- ⑤ **NORTHWEST SECTION CORNER**
FOUND A 2" IRON PIPE WITH A BLM BRASS CAP, 1963
A 18" FIR, N58 E 2.6', SCRIBE VIS.
A 8" FIR SNAG, SIDE, 18.3', SCRIBE VIS.
A 10" FIR, S30 W, 15.6', SCRIBE VIS.
A 10" FIR, S33 W, 17.9', SCRIBE VIS.
A 18" FIR, N62 W, 12.9', SCRIBE VIS.
A 6" FIR SNAG, N33 W, 4.5', SCRIBE VIS.
- ⑥ **WEST 1/16 CORNER NORTH LINE**
SET R.R. SPIKE IN PAVEMENT FOR COR BY DISTANCE ONLY FROM BEARING TREES FOUND:
A 18" FIR, S11 E, 87.1' SCRIBE VIS.
A 20" FIR, N66 W, 33.7', SCRIBE VIS.
- ⑦ **NORTH 1/4 CORNER**
FOUND A 2" IRON PIPE WITH A BLM BRASS CAP, 1963 AND A STONE MK'D 1/4
A 28" FIR, N50E, 29.7' TO W.CO. NAIL CLOSED FACE, BLM BT
A 22" FIR, S26 W, 11.8' TO W.CO. NAIL CLOSED FACE, BLM BT
A 38" FIR, S81 W, 104.5' TO W.CO. NAIL W.CO. R.P.

- Ⓐ **NORTH 1/16 CORNER EAST LINE**
SET 1 1/4" X 36" IRON PIPE
A 22" FIR, S12E, 20.5' TO A R.R. SPIKE
A 28" FIR, N67 W, 9.0' TO A R.R. SPIKE
- Ⓑ **NORTHEAST 1/16 CORNER**
SET 1 1/4" X 36" IRON PIPE
A 30" FIR, N28 E, 7.0' TO A R.R. SPIKE
A 24" FIR, S56 E, 33.0' TO A R.R. SPIKE
- Ⓒ **CENTER EAST 1/16 CORNER**
SET 3/4" X 30" IRON PIPE
A 14" HEM, S48 E, 14.3' TO A R.R. SPIKE
A 24" HEM, S86 W, 10.5' TO A R.R. SPIKE
- Ⓓ **CENTER 1/4 CORNER**
SET 3/4" X 30" IRON PIPE
A 40" S. PINE, N15 E, 18.0' TO A R.R. SPIKE
A 24" FIR, S5 W, 50.3' TO A R.R. SPIKE
- Ⓔ **CENTER NORTH 1/16 CORNER**
SET 3/4" X 36" IRON PIPE
A 18" HEM, N35 E, 11.4' TO A R.R. SPIKE
A 18" FIR, S13 W, 18.6' TO A R.R. SPIKE
- Ⓕ **NORTHWEST 1/16 CORNER**
SET 3/4" X 36" ALUMINUM PIPE
A 14" HEM, N76 E, 13.1' TO A R.R. SPIKE
A 38" FIR, S67 W, 11.8' TO A R.R. SPIKE