

COUNTY SURVEYORS FILE DATA
DO NOT REMOVE FROM OFFICE

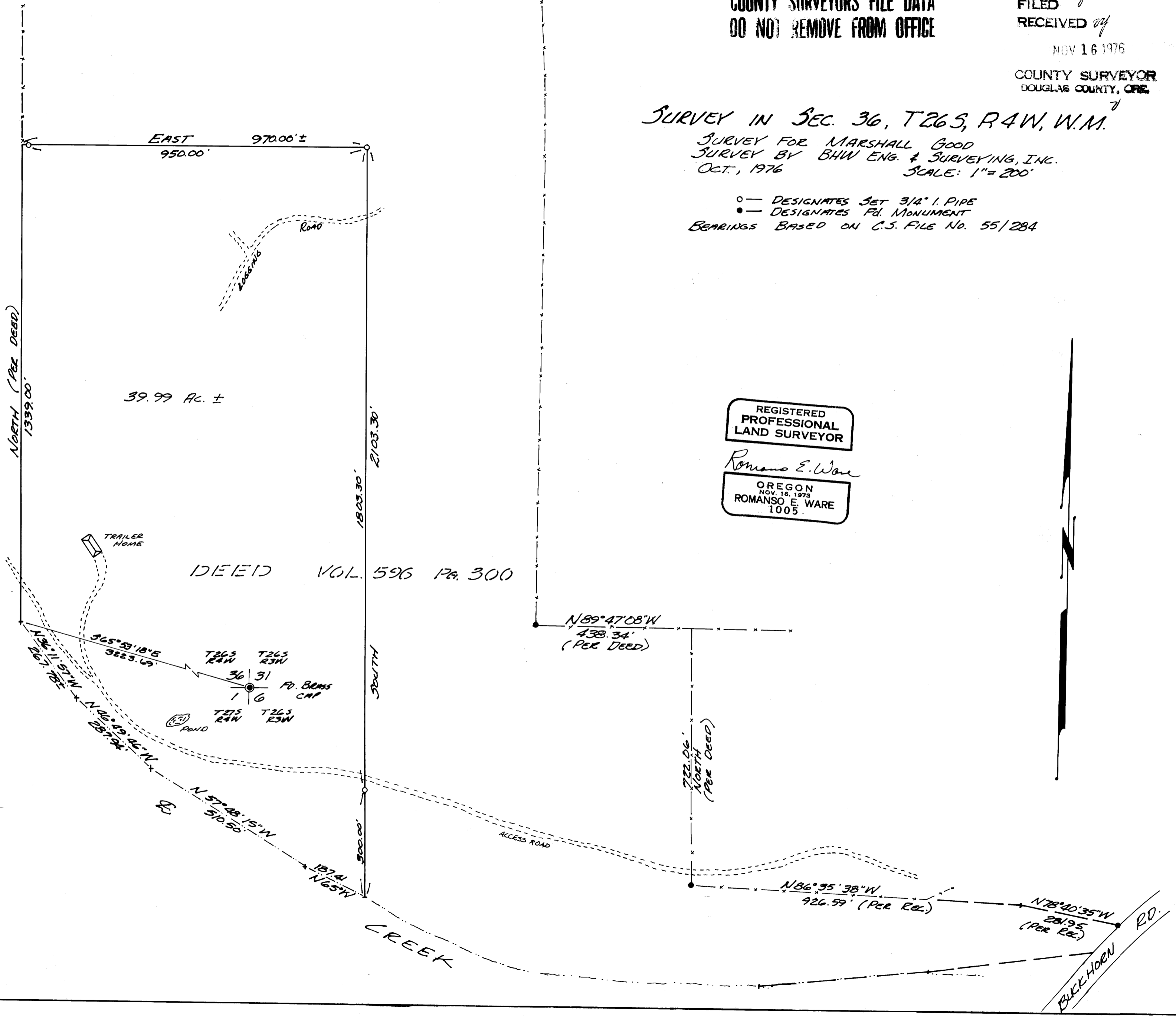
FILED *v*
RECEIVED *of*
NOV 16 1976

COUNTY SURVEYOR
DOUGLAS COUNTY, ORE.

SURVEY IN SEC. 36, T26S, R4W, W.M.

*SURVEY FOR MARSHALL GOOD
SURVEY BY BHW ENG. & SURVEYING, INC.
OCT., 1976
SCALE: 1"=200'*

○ — DESIGNATES SET 3/4" I. PIPE
● — DESIGNATES PD. MONUMENT
BEARINGS BASED ON C.S. FILE NO. 55/284



REGISTERED
PROFESSIONAL
LAND SURVEYOR

Romano E. Ware

OREGON
NOV. 16, 1973
ROMANSO E. WARE
1005

IDEED VOL. 596 Pg. 300

39.99 AC. ±

TRAILER HOME

T26S R4W T26S R3W
36 31 PD. BARRS CAP
1 6
T26S R4W T26S R3W
POND

ACCESS ROAD

CREEK

BULLHOVEN RD.

MAP FILE M42-25

MAP FILE M42-25