

R.E.W.  
10/77

3  
SURVEY IN SECTION 14, T27S, R4W, W.M.  
FOR SKYCAMP, INC.  
BY BHW ENG. & SURVEYING, INC.  
OCT., 1976 SCALE: 1" = 200'

FILED ✓  
RECEIVED 24

NOV 16 1976

COUNTY SURVEYOR  
DOUGLAS COUNTY, ORE.

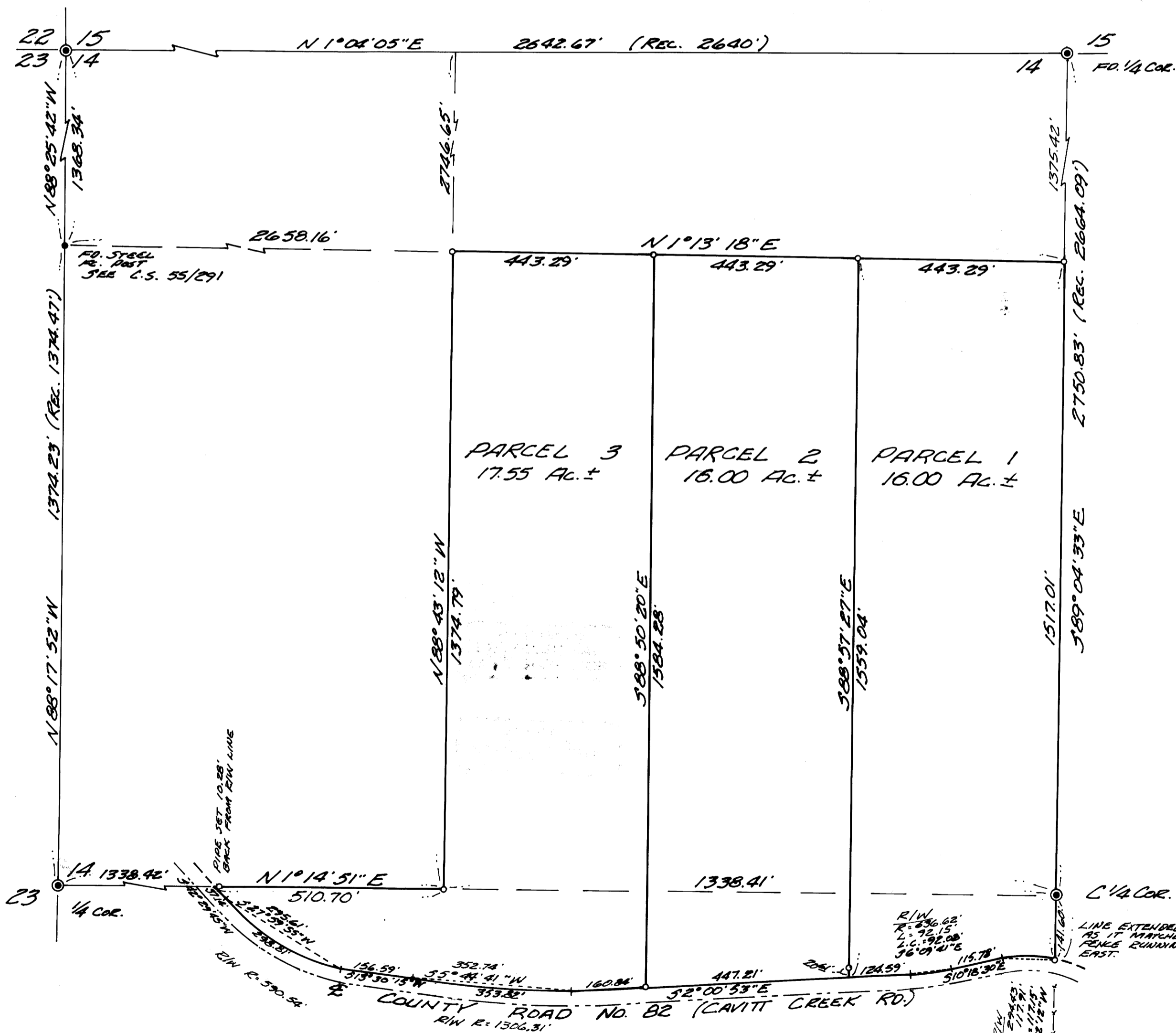
- — JET 3/4" I. PIPE
- — FO. BRASS CAP

COUNTY SURVEYORS FILE DATA  
DO NOT REMOVE FROM OFFICE

REGISTERED  
PROFESSIONAL  
LAND SURVEYOR

Romanso E. Ware

OREGON  
NOV. 16, 1973  
ROMANSO E. WARE  
1005



BEARINGS BASED ON COMPASS BEARING  
RUNNING NORTH FROM S.W. COR. SECTION 14.