

COUNTY SURVEYORS FILE DATA
DO NOT REMOVE FROM OFFICE

SURVEY TO SET LOT CORNERS IN BLOCK 23,
AMENDED PLAT TOWNSITE OF SUTHERLIN
SECTION 17, T25S, R5W, W.M.

FOR DON KNIGHT
BY BHW ENGINEERING & SURVEYING
OCT, 1976

- FO. 1/2" I. ROD
- SET 3/4" I. PIPE

FILED ✓
RECEIVED 24
NOV 16 1976

COUNTY SURVEYOR
DOUGLAS COUNTY, ORE.

MAP FILE M62-19

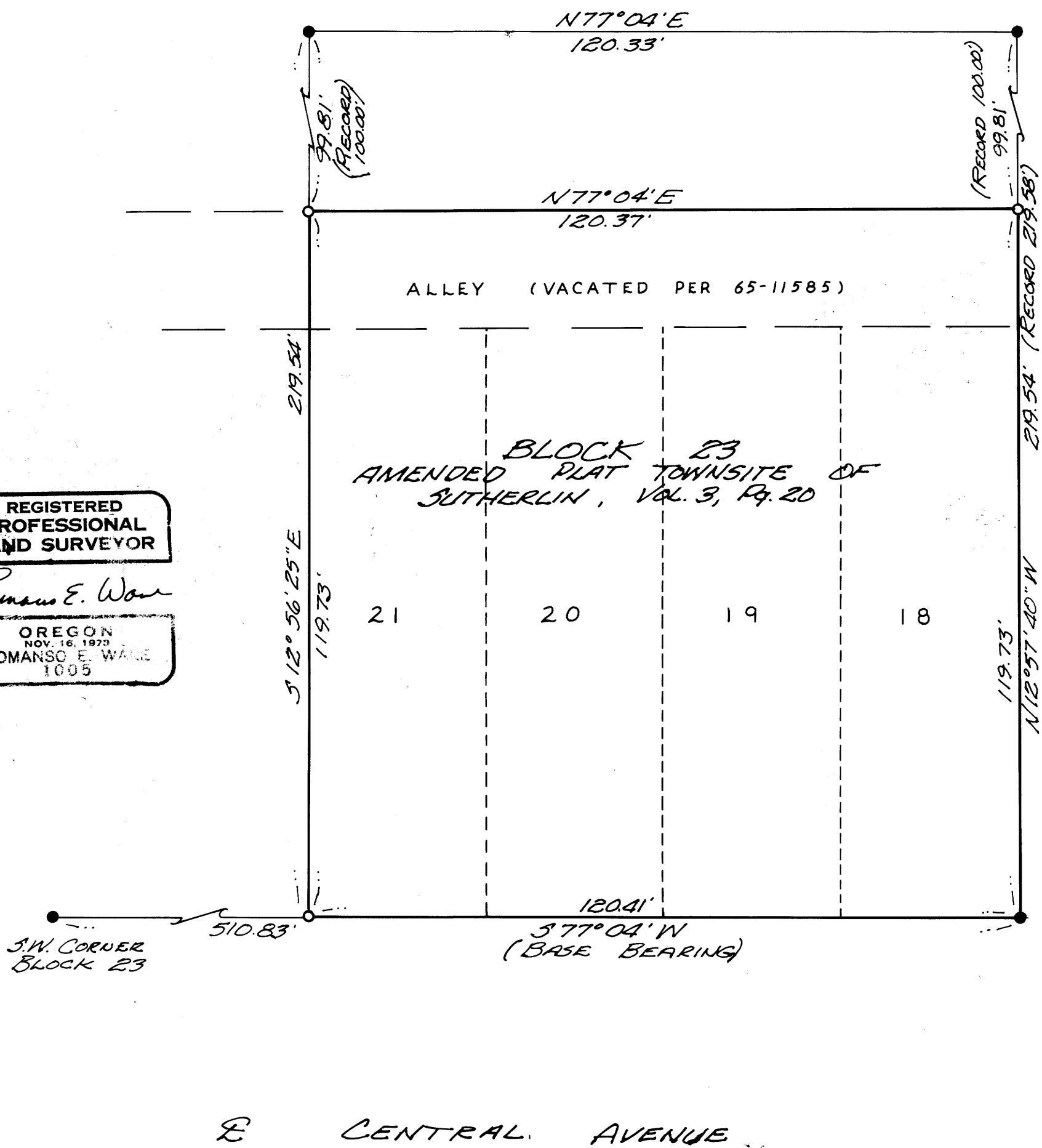


SCALE 1" = 20'

REGISTERED
PROFESSIONAL
LAND SURVEYOR

Romanso E. Ware

OREGON
NOV. 16, 1973
ROMANSO E. WARE
1005



MAP FILE M62-19