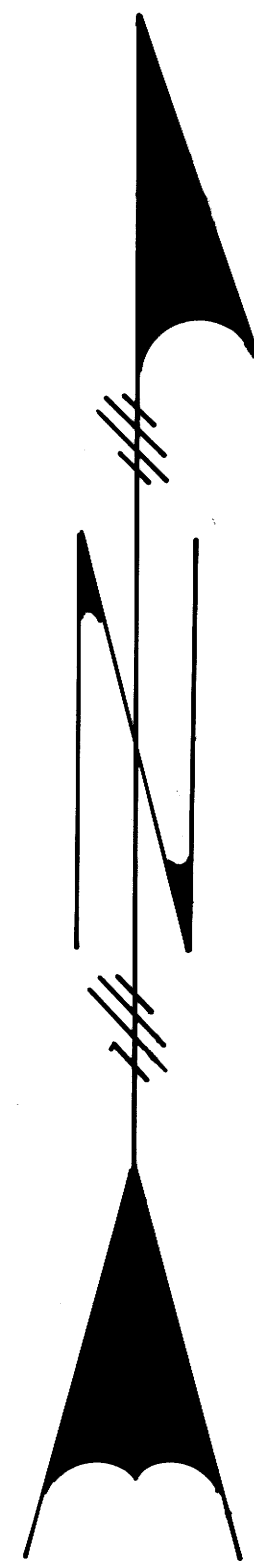


SURVEY TO ESTABLISH THE CENTER ONE QUARTER CORNER AND  
ONE-SIXTEENTH CORNERS IN  
SECTION 12 T29 S R3 W W.M.  
BY BURTON W. HOLT FOR SUN STUDS INC.  
OCTOBER 1976 scale 1"=500'

FILED  
RECEIVED  
NOV 5 1976  
COUNTY SURVEYOR  
DOUGLAS COUNTY, ORE.



BTS FOUND  
20" D FIR BEARS N12°W 16.7'  
14" R FIR BEARS S35°E 19.3'  
12" R FIR BEARS S87°W 300'

NEW BTS  
8" HEMLOCK BEARS N48°W 23.4'  
6" HEMLOCK BEARS N42°E 26.2'

BTS FOUND  
7" D FIR BEARS S71°W 12.8'  
12" D FIR BEARS N58°E 10.1'

BASED ON SOLAR OBSERVATION  
SEPT 22-1976  
NEW BTS  
7" D FIR BEARS S15°30'E 26.4'  
6" D FIR BEARS S25°W 12.8'

BTS FOUND  
9" D FIR BEARS N43°30'W 56.6'  
15" D FIR BEARS N70°30'E 38.9'  
30" CEDAR BEARS S37°E 49.5'

BTS FOUND  
34" D FIR BEARS N52°E 7.0'  
32" D FIR BEARS S58°W 22.0'

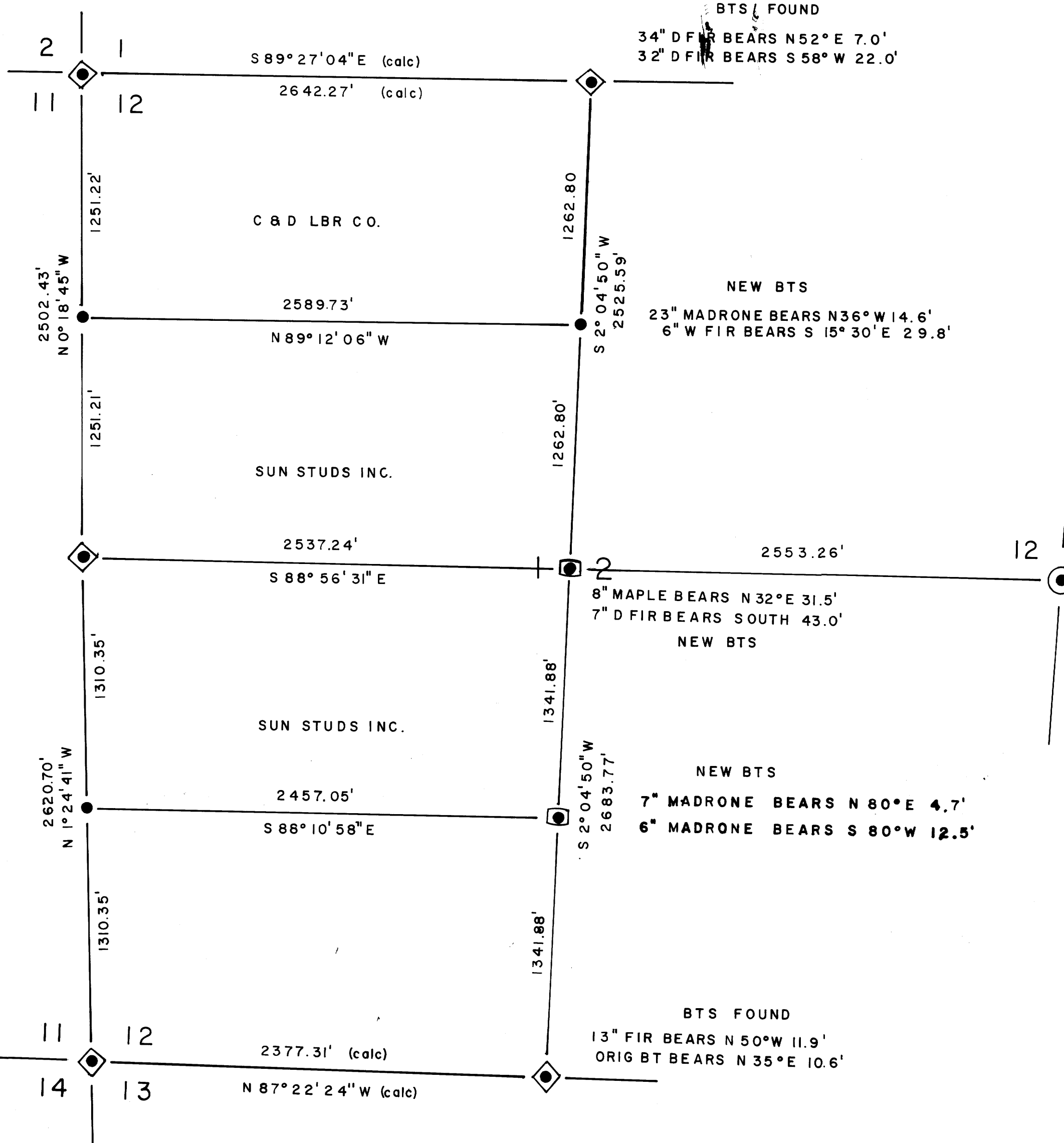
NEW BTS  
23" MADRONE BEARS N36°W 14.6'  
6" W FIR BEARS S15°30'E 29.8'

REGISTERED  
PROFESSIONAL  
LAND SURVEYOR  
*Burton W. Holt*  
OREGON  
OCT 28, 1957  
BURTON W. HOLT  
413

BTS FOUND  
FD ROCK 9"x11"x5" 1/4 CHISELED ON W FACE  
22" CEDAR BEARS S80°W 20.0'  
24" D FIR BEARS S50°15'W 44.2'

NEW BTS  
7" MADRONE BEARS N80°E 4.7'  
6" MADRONE BEARS S80°W 12.5'

BTS FOUND  
13" FIR BEARS N50°W 11.9'  
ORIG BT BEARS N35°E 10.6'



— LEGEND —  
 ◆ — FOUND BRASS CAP  
 ● — SET 3/4" X 42" IRON PIPE  
 ◻ — SET 1 1/4" X 24" IRON PIPE  
 ○ — FOUND ORIGINAL CORNER STONE

MAP FILE 1162-12...