

PROPERTY SURVEY FOR INTERNATIONAL PAPER CO.

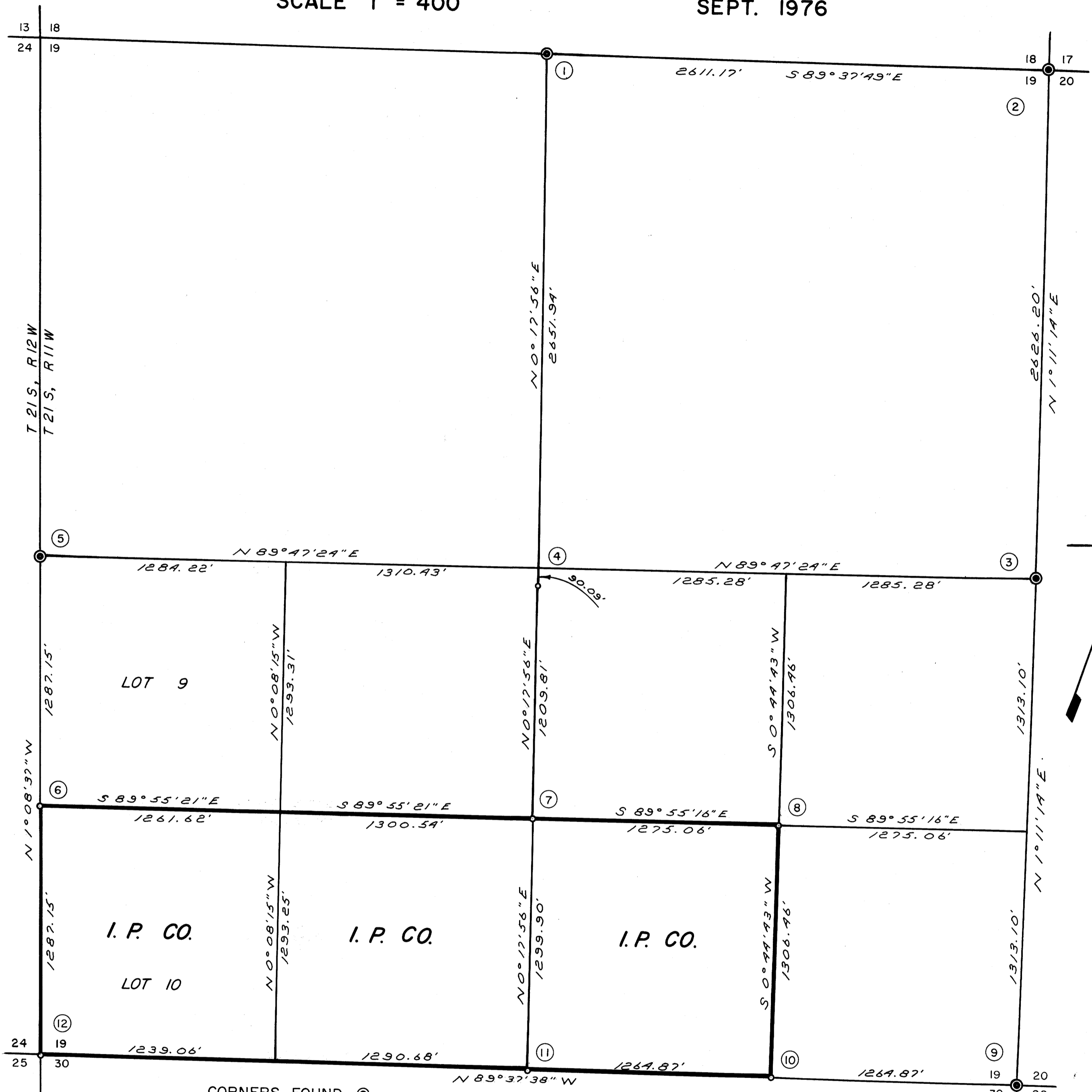
COUNTY SURVEYORS FILE DATA
DO NOT REMOVE FROM OFFICE

FILED
RECEIVED
OCT 26 1976
COUNTY SURVEYOR
DOUGLAS COUNTY, ORE.

SEC. 19, T21S, R11W.

SCALE 1" = 400'

SEPT. 1976



CORNERS FOUND

- ① 1 1/4" I.P., CS 40/169, *12, UTL. POLE $\frac{10C}{22}$ BRS. N 2° W, 42.8'
- ② 1 1/4" I.P., CS 40/169, *11, *76
- ③ I.P./BR. CAP, *78
- ⑤ C.S. 58/47
- ⑨ 1 1/4" I.P., CS 40/169, *10, *79
- ⑭ I.P./BR. CAP, DOUGLAS COUNTY SURVEYOR, 1971
CS 54/1, *62

CORNERS SET

- ④ 5/8" I.R. ON SOUTH R/W LINE OF COUNTY ROAD #195
- ⑥ 5/8" I.R. FROM WHICH:
30" SPRUCE BRS. N 78° W, 50.9 FT., SCRIBED
16" HEMLOCK BRS. S 46 1/2° E, 19.4 FT., SCRIBED
- ⑦ 5/8" I.R. FROM WHICH:
8" ALDER BRS. N 38 1/2° W, 5.5 FT., SCRIBED
6" ALDER BRS. S 41 3/4° E, 13.3 FT., SCRIBED
- ⑧ 5/8" I.R. FROM WHICH:
8" ALDER BRS. N 62° E, 11.7 FT., SCRIBED
20" CEDAR BRS. S 71° W, 41.3 FT., SCRIBED
- ⑩ 5/8" I.R. FROM WHICH:
36" FIR BRS. N 61° E, 16.5 FT., SCRIBED
14" ALDER BRS. S 23° W, 3.5 FT., SCRIBED
- ⑪ 5/8" I.R. FROM WHICH:
28" WHITE FIR BRS. WEST, 32.7 FT., SCRIBED
16" HEMLOCK BRS. S 50° E, 22.3 FT., SCRIBED
- ⑫ 5/8" I.R. FROM WHICH:
34" CEDAR BRS. N 71° E, 36.7 FT., SCRIBED
26" HEMLOCK BRS. S 82° E, 23.6 FT., SCRIBED
18" HEMLOCK BRS. S 5° E, 22.7 FT., SCRIBED
16" CEDAR BRS. N 58° W, 58.1 FT., SCRIBED
CORNER IS ON TOP OF RIDGE WHICH BRS. NW & SE
- ⑬ 5/8" I.R. FROM WHICH:
60" FIR BRS. N 45° W, 1.8 FT. TO AN ALUMINUM NL. IN FACE, BARK SCRIBED
18" SPRUCE BRS. S 9° E, 31.5 FT., SCRIBED
CORNER IS APPROX. 120 FT. NORTH OF U.S.F.S. ROAD.

REGISTERED
PROFESSIONAL
LAND SURVEYOR
Richard J. Hintz
OREGON
MAY 19, 1960
RICHARD J. HINTZ
497

REVISED S. LINE - SEE M 70-74
SEE ALSO REVISION M 88-52