

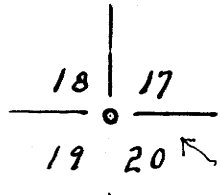
FILED  
 RECEIVED  
 OCT 26 1976  
 COUNTY SURVEYOR  
 DOUGLAS COUNTY, ORE.

Township 22 South, Range 4 West W.M.  
 Section 19, 20, 29 and 30  
 Donation Land Claim # 39

Survey for Deed Description + calculation of Acreage  
 For  
 Maple Creek Ranch

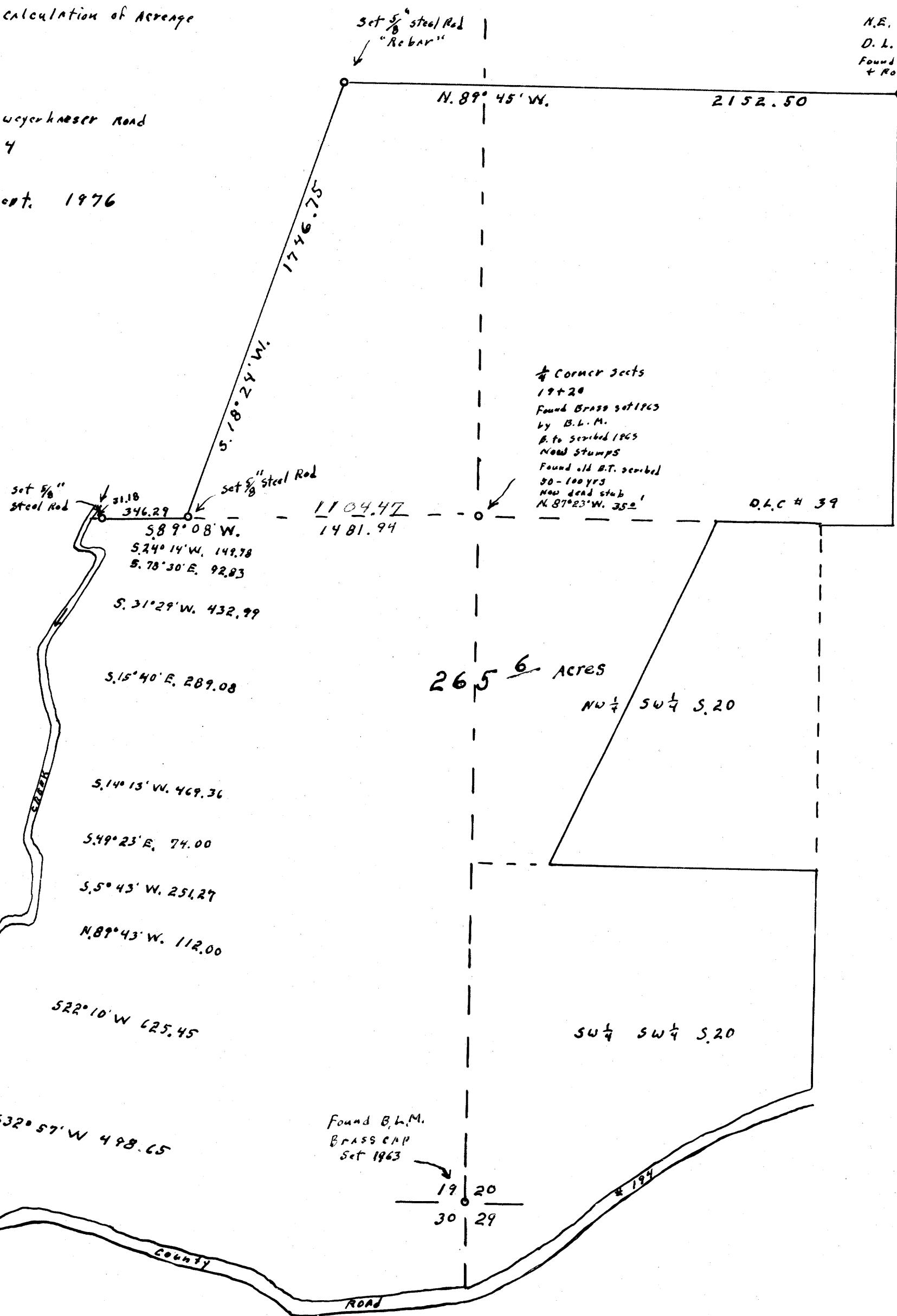
John Winslow 72985 London-Weyerhaeuser Road  
 Cottage Grove, Oregon. 97424

John Baldwin Sept. 1976



Found B.T.s  
 Did not find  
 monument

N.E. Corner  
 D.L.C. # 39  
 Found fence corner  
 + Rock



1/4 Corner Sects  
 19+20  
 Found Brass set 1965  
 by B.L.M.  
 B.T. scribbled 1965  
 Nail Stumps  
 Found old B.T. scribbled  
 30-100 yrs  
 Now dead stub  
 N. 87° 23' W. 35.0'

D.L.C. # 39

265 6/10 Acres  
 NW 1/4 SW 1/4 S. 20

SW 1/4 SW 1/4 S. 20

REGISTERED  
 OREGON  
 LAND SURVEYOR  
 Wilford N. Haines  
 MAY 7, 1948  
 WILFORD N. HAINES  
 239

NORTH  
 BASED ON NAD 83  
 STATE LINE 19420

1" = 400'

Drawing No  
 78. 13-6