

COUNTY SURVEYORS FILE DATA
DO NOT REMOVE FROM OFFICE

Survey in Lots 1, 2 & 3 Block 2 of North Park Addition to Roseburg, Douglas County, Oregon

Sec. 18, T27S, R5W, W.M.

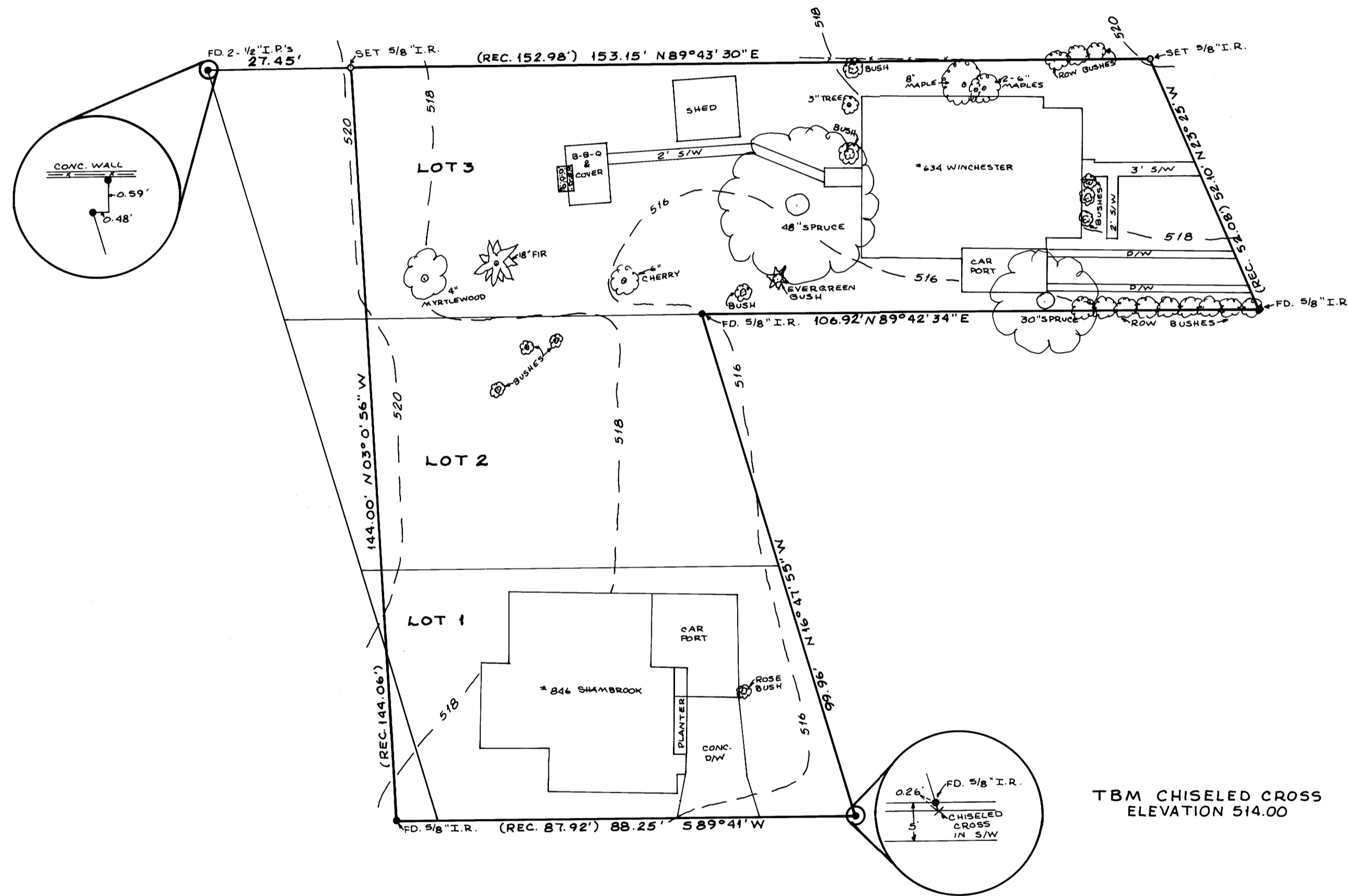
Basis of bearings:
Survey by Herbert L. Northcraft
January 1976 M59-5

FILED
RECEIVED KR

OCT 15 1976

COUNTY SURVEYOR
DOUGLAS COUNTY, ORE.

Surveyed for Chan Stokes
By S&J Engineering
October 1976 Scale: 1" = 20'



TBM CHISELED CROSS
ELEVATION 514.00

MAP FILE: M61-77

MAP FILE: M61-77