

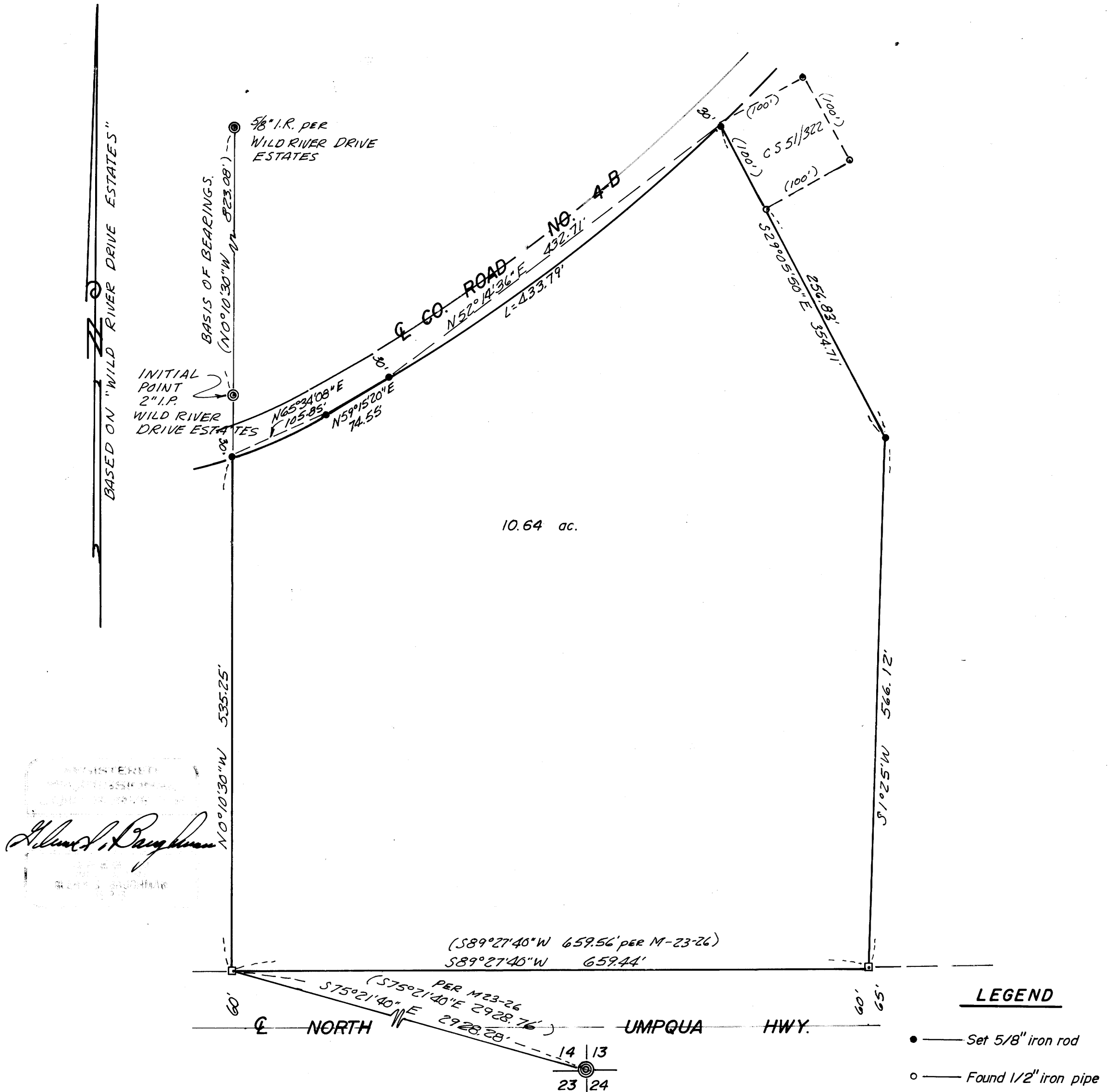
# SURVEY FOR DESCRIPTION IN SECTION 14, T.26S. R.4W.W.M. FOR: GORDON CROOK BY: BAUGHMAN SURVEYING SERVICE

FILED ✓  
RECEIVED M.L.L.  
OCT 14 1976  
COUNTY SURVEYOR  
DOUGLAS COUNTY, ORE.  
✓

SEPTEMBER 1976

SCALE: 1"=100'

COUNTY SURVEYORS FILE DATA  
DO NOT REMOVE FROM OFFICE



- LEGEND**
- — Set 5/8" iron rod
  - — Found 1/2" iron pipe
  - ⊙ — Found, as noted
  - — Fence post