

SURVEY FOR DESCRIPTION IN SECTION 8, T.29S.R.7W.W.M.

FOR: KEITH HUSEN

BY: BAUGHMAN SURVEYING SERVICE

SEPTEMBER 1976 SCALE: 1"=200'

COUNTY SURVEYORS FILE UNIT
DO NOT REMOVE FROM OFFICE

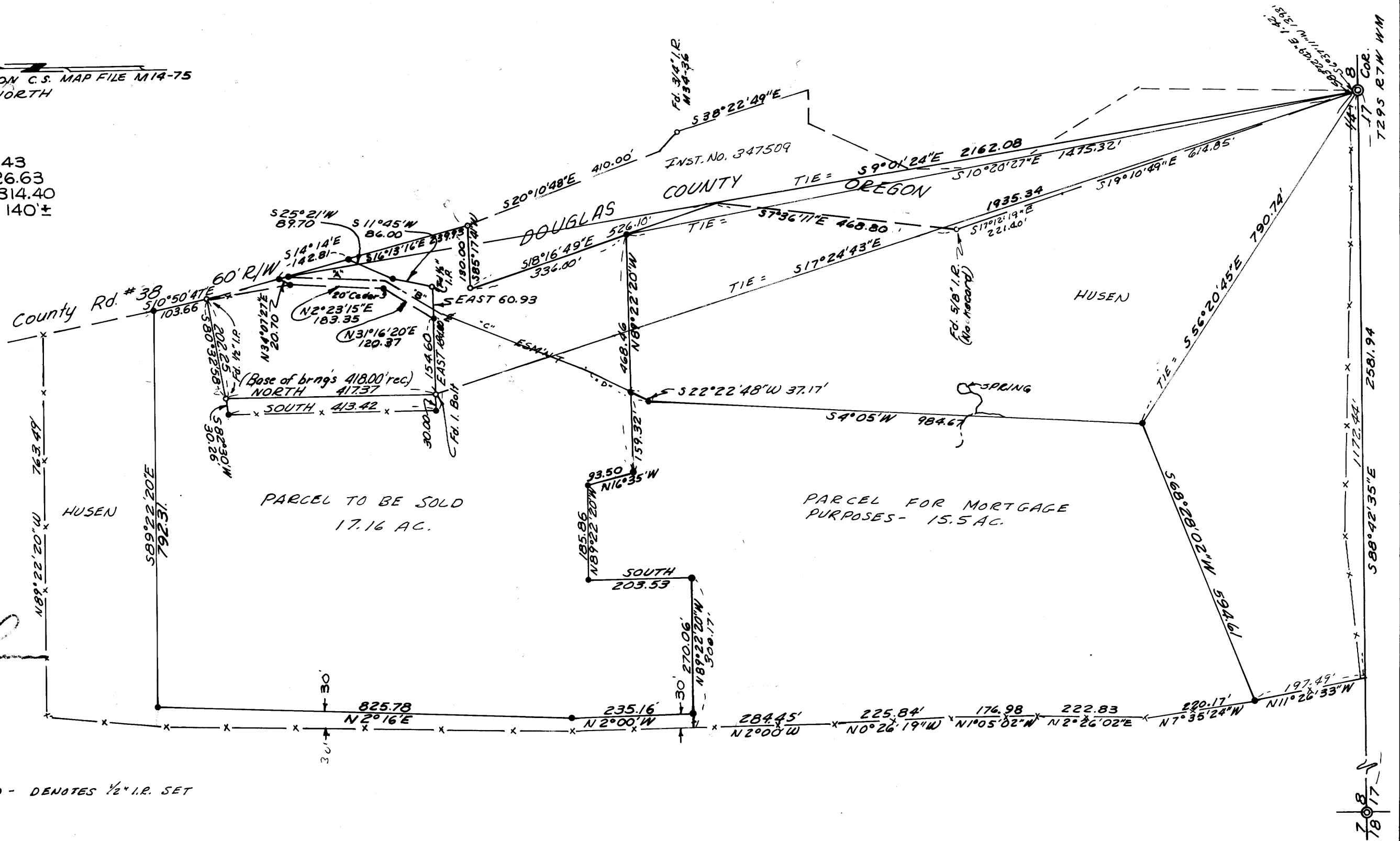
FILED
RECEIVED M.L.L.

OCT 14 1976

COUNTY SURVEYOR
DOUGLAS COUNTY, ORE.

BEARINGS BASED ON C.S. MAP FILE M14-75
NORTH

EASEMENT DESC.
"A" = S 2° 23' 15" W 189.43
"B" = S 31° 04' 52" W 126.63
"C" = S 23° 02' 38" W 314.40
"D" = S 22° 22' 48" W 140' ±



Keith Husen

• - DENOTES 1/2" I.R. SET