

JUL 28 1976

SURVEY FOR: BOISE CASCADE CORPORATION

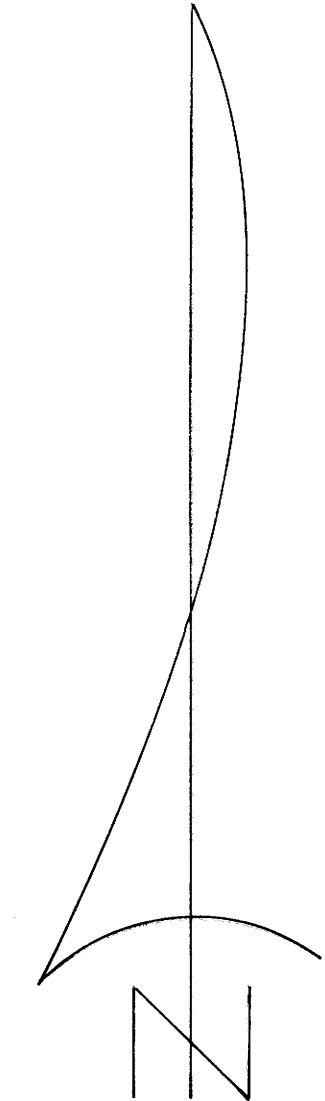
LOCATED IN SEC. 34, T.32 S., R.4 W., W.M., DOUGLAS COUNTY, OREGON

By: MARK E. BOYDEN, R.P.L.S. OREGON No 281

Date: JULY 26, 1976

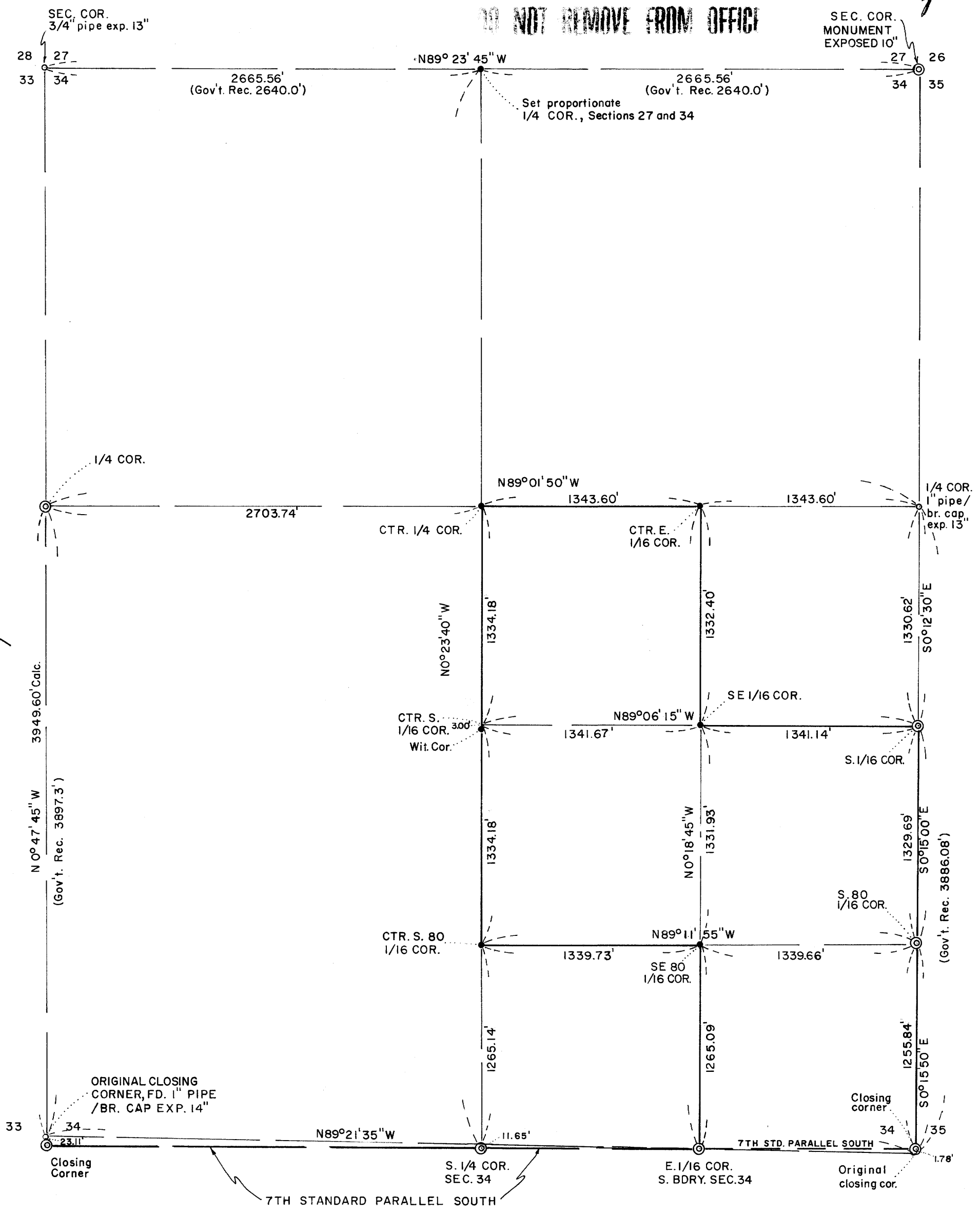
COUNTY SURVEYORS FILE DATA
DO NOT REMOVE FROM OFFICE

COUNTY SURVEYOR
DOUGLAS COUNTY, ORE.



SCALE: 1" = 600'

Basis of bearings: Mean of 6 solar observations



- ⊙ Fd. B.L.M. Br. Cap Monument
- Fd. Douglas Co. monument as indicated
- Set 3/4" X 36" G.I.P. with 2" Br. Cap exp. 3" to 6"

REGISTERED
PROFESSIONAL
LAND SURVEYOR

Mark E. Boyden

OREGON
NOV. 9, 1958
MARK E. BOYDEN
281

Survey No. M61-7

SURVEY NARRATIVE TO COMPLY WITH O.R.S. 209.250.

FILED
RECEIVED *vy*

JUL 28 1976

FOR: Boise Cascade Corporation
Timber and Wood Products Group
Southern Oregon Region
P. O. Box 100
Medford, Oregon, 97501

COUNTY SURVEYOR
DOUGLAS COUNTY, ORE.

PURPOSE:

1. To monument and reference the interior property corners of the Boise ownership in the Southeast Quarter of Section 34, Township 32 South, Range 4 West of the Willamette Meridian, Douglas County, Oregon.
2. Also mark the true line with Boise ("BCC") aluminum tags and yellow flagging on the following boundaries:
 - a. The "North-South" centerline of Section 34 from the Center Quarter corner to the Center-South-80 1/16 corner.
 - b. From the Center South-80 1/16 corner to the SE-80-1/16 corner.
 - c. From the Southeast 1/16 corner to the South 1/16 corner common to Sections 34 & 35.

PROCEDURE: The Cadastral Surveyors office of the B.L.M. (Medford Branch) and the Jackson and Douglas County Surveyor's offices were contacted prior to commencing the field work.

It was found that the Cadastral surveyors of the B.L.M. had completed an extensive survey of the Seventh Standard Parallel South, and had run lines to the nearest found corners to the North and South of said Standard Parallel to set the true closing Section corners on said Parallel. This work was done during the 1975 field season, with the found and missing corners monumented and referenced. The office work was being prepared so that the notes could be forwarded to the Portland Cadastral Surveyor's office for review and approval by the Washington, D.C. Cadastral Survey office of the B.L.M. The B.L.M. surveyors found and utilized the brass cap monument set for the Quarter corner common to Sections 34 and 35 by the Douglas County Surveyor's office on May 18, 1970. Running Southerly, the B.L.M. surveyors set and referenced the South 1/16 corner, the South 80 1/16 corner and the true closing corner between Sections 34 and 35

FILED
RECEIVED *27*

JUL 28 1976

Boise Cascade Corporation

Page 2 of 5

COUNTY SURVEYOR
DOUGLAS COUNTY, ORE.

on the Seventh Standard Parallel South. The B.L.M. surveyors utilized the pipe corner reported by the Douglas County Surveyor's office on July 31, 1968 and angle point control points found set along the original Seventh Standard Parallel South survey.

The B.L.M. survey continued Westerly along the Seventh Standard Parallel South, monumenting and referencing the original Parallel angle points as well as setting the East 1/16 corner, the South Quarter corner of Section 34 and the true closing corner between Sections 33 and 34 on said Seventh Standard Parallel.

At the true closing corner common to Sections 33 and 34, the B.L.M. surveyors utilized the 1970 Douglas County Surveyor's brass cap as well as original angle points on the Seventh Standard Parallel and also the original Quarter corner common to Sections 33 and 34, where the B.L.M. surveyors found the original marked stone and the original Southwest bearing tree with illegible scribe marks. The B.L.M. survey ran from the true closing corner of Sections 33 and 34 on the Seventh Standard Parallel South to the Quarter corner common to Sections 33 and 34, but did not monument the intervening 1/16 corners.

It should be noted that all of the B.L.M. brass cap monuments shown on the annexed map were set in 1975 except the Northeast corner of Section 34, which was monumented and referenced in 1959, and has since been approved.

All of the B.L.M. corner monuments were utilized in their found positions for control of this survey.

Corner data was furnished by the Douglas County Surveyor's office. This data was utilized and the corner monuments were accepted in their found positions on this survey.

It should be noted that the Douglas County Surveyor had searched but did not find the original Quarter corner common to Sections 27 and 34. In this survey, a diligent search was also made for this corner with negative results.

The field work on this survey was executed with a one-second theodolite, an electronic measuring instrument and chain, wherein random lines were run into each found control corner. Stubbed lines were either looped back or closed against the B.L.M. survey, which survey was found to be in good order.

The method of computing the positions of the Center-South and Center-South 80

G. S. File No. 58/426 b

FILED
RECEIVED *dy*

JUL 28 1976

Boise Cascade Corporation

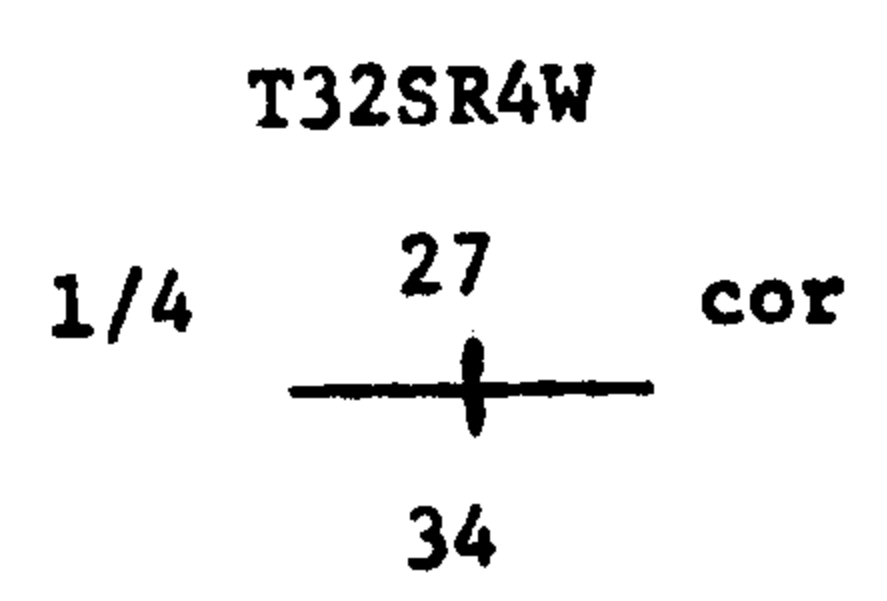
COUNTY SURVEYOR
DOUGLAS COUNTY, ORE.

1/16 corners was based on the 1973 B.L.M. manual of Surveying Instructions. This procedure was to use a straight line between the "original" (but not true) closing corners, and not use the "North-South" position of the recently set South Quarter of Section 34 on the Seventh Standard Parallel South.

The corners monumented and referenced on this survey are as follows:

At the Quarter corner common to Sections 27 and 34, T32SR4W, set midway between the monumented Northwest and Northeast corners of Section 34, set a 3/4" x 36" galvanized iron pipe with a 2" brass cap stamped:

#130



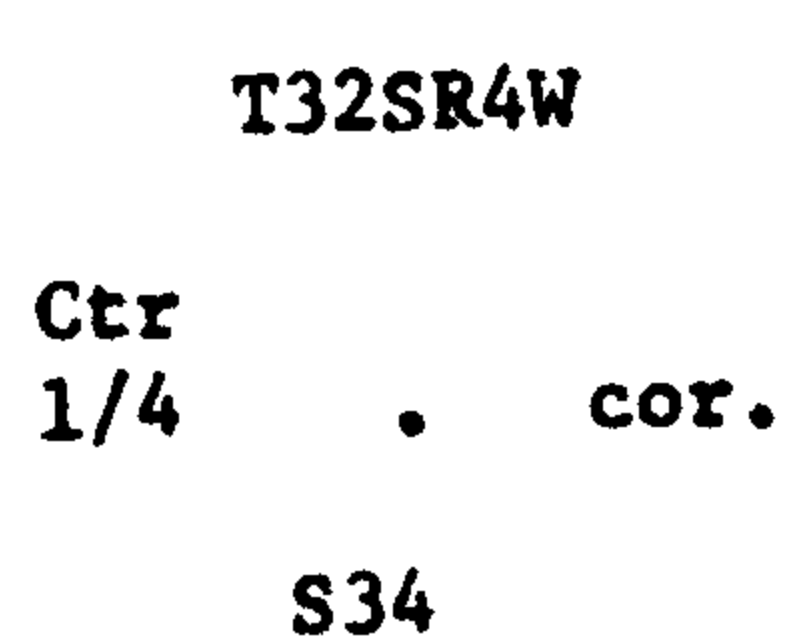
1976 , exposed 6", from which:

Scribed an 8" D. Fir, "1/4S - BT" which bears North 80° East, 3.8 feet to the face of the lower blaze;

Scribed an 8" D. Fir, "1/4S - BT" which bears South 45 1/2° East, 5.6 feet to the face of the lower blaze.

At the Center Quarter corner of said Section 34, set a 3/4" x 36" galvanized iron pipe with a 2" brass cap stamped:

#139



1976 , exposed 3", from which:

Scribed a 3" D. Fir "C 1/4 - BT" which bears South 72° East, 46.1 feet to the face of the lower blaze.

At the Center-South 1/16 corner of said Section 34, set a point, from which: Set a 3/4" x 36" galvanized iron pipe with 2" brass cap stamped:

"Wit. cor.

3 ft. South" , exposed 3" bears South 0° 23' 40"

East, 3.00 feet;

From said corner point,

Scribed a 36" D. Fir, "CS 1/16 - BT" which bears North 57° West, 46.2 feet

FILED
RECEIVED *24*

Boise Cascade Corporation

JUL 28 1976

Page 4 of 5

to the face of the lower blaze; COUNTY SURVEYOR
DOUGLAS COUNTY, ORE.

Scribed a 12" D. Fir, "CS 1/16 - BT" which bears North 70° East, 29.0 feet to the face of the lower blaze.

At the Center-South-80-1/16 corner of said Section 34, set a 3/4" x 36" galvanized iron pipe, with 2" brass cap stamped:

T32SR4W

Ctr So. 80

1/16 . Cor.

S34

1976 , exposed 3", from which:

Scribed a 9" D. Fir, "CS 80 1/16 - BT" which bears North 25 1/4° East, 2.1 feet to the face of the lower blaze;

Scribed a 7" D. Fir, "CS 80 1/16 - BT" which bears South 23 3/4° West, 10.1 feet to the face of the lower blaze.

At the Southeast 80 1/16 corner of said Section 34, set a 3/4" x 36" galvanized iron pipe with a 2" brass cap stamped:

T32SR4W

SE 80

1/16 . cor.

S34

1976 , exposed 3", from which:

Scribed a 6" S. Pine, "SE 80 1/16 - BT" which bears South 35° West, 33.5 feet to the face of the lower blaze;

Scribed a 14" D. Fir, "SE 80 1/16 - BT" which bears North 53° West, 16.7 feet to the face of the lower blaze.

At the Southeast 1/16 corner of said Section 34, set a 3/4" x 36" galvanized iron pipe with a 2" brass cap stamped:

T32SR4W

SE 1/16 cor.

.

S34

1976 , exposed 3", from which:

FILED
RECEIVED *mf*

JUL 28 1976

Page 5 of 5

Boise Cascade Corporation

COUNTY SURVEYOR
DOUGLAS COUNTY, ORE.

Scribed a 10" Hemlock, "SE 1/16 BT", which bears North 44° East, 63.2 feet to the face of the single blaze;

Scribed a 7" W. Fir, "SE 1/16 - BT" which bears South 57 1/4° East, 40.0 feet to the face of the lower blaze.

At the Center-East 1/16 corner of said Section 34, set a 3/4" x 36" galvanized iron pipe, with a 2" brass cap stamped:

T32SR4W

Ctr - E

1/16 . cor.

S34

1976 , exposed 3", from which:

Scribed a 13" D. Fir, "CE 1/16 - BT" which bears South 58 1/4° West, 51.8 feet to the face of the lower blaze;

Scribed a 10" D. Fir, "CE 1/16 BT" which bears North 25 1/4° West, 82.8 feet to the face of the single blaze.

July 26, 1976

