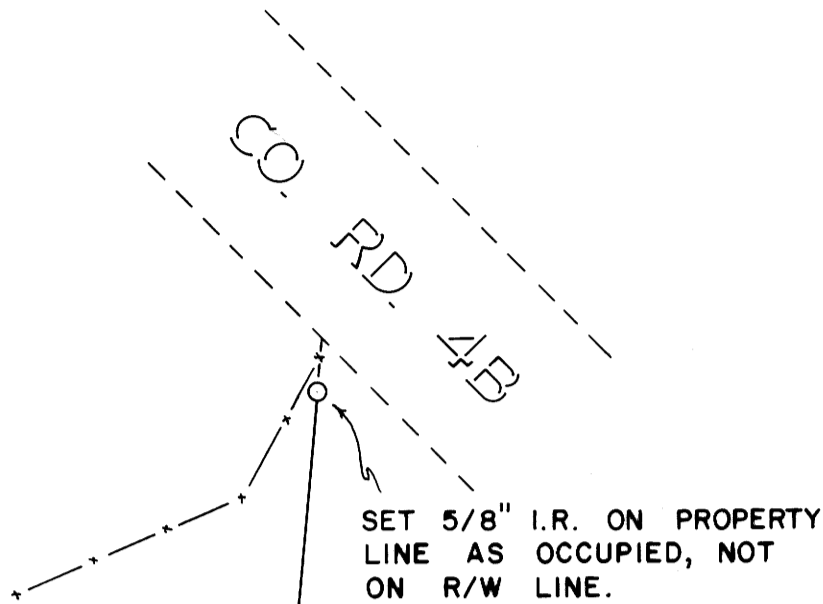


OCT 14 1976

COUNTY SURVEYOR
DOUGLAS COUNTY, ORE.

✓

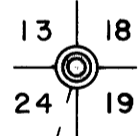


SURVEY FOR
DOUGLAS COUNTY DEPT. OF PUBLIC WORKS
SEC. 24, T.26S., R.4W., W.M.

NOTE: Bearings And Distances Shown Are True.
 Survey Based On The Oregon State Plane
 Coordinate System, South Zone, Using
 The Following Control Station:

"GLIDE"	"NU - 24"
604,997.7 N	609,213.4 N
1,307,635.4 E	1,302,166.4 E

T 26 S
 R 4 W R 3 W



FD. BRASS
 CAP

SURVEYED BY
DOUGLAS COUNTY SURVEYOR'S OFFICE
FRANCIS L. INGRAM COUNTY SURVEYOR
 SCALE 1" = 40' OCTOBER 1976

FD. 5/8" I.R.

1100.82'
 N 16°05'03"E

77.95'
 N 1°51'57"E

FD. 5/8" I.R.

NORTH UMPQUA
 HWY.

REGISTERED
 PROFESSIONAL
 LAND SURVEYOR

Francis L. Ingram

OREGON
 JULY 11, 1969
 FRANCIS L. INGRAM
 902

CS FILE FOLDER

CONTAINS

MORE

INFORMATION