

**SURVEY IN LOTS 3, 8, 9 & 10 OF
ANDRIES ADDITION TO
ROSEBURG, OREGON.**

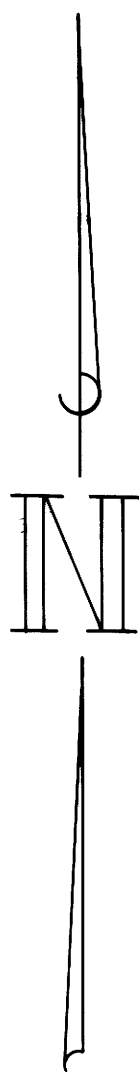
**COUNTY SURVEYORS FILE DATA
DO NOT REMOVE FROM OFFICE**

FILED ✓
RECEIVED DLS

OCT 11 1976

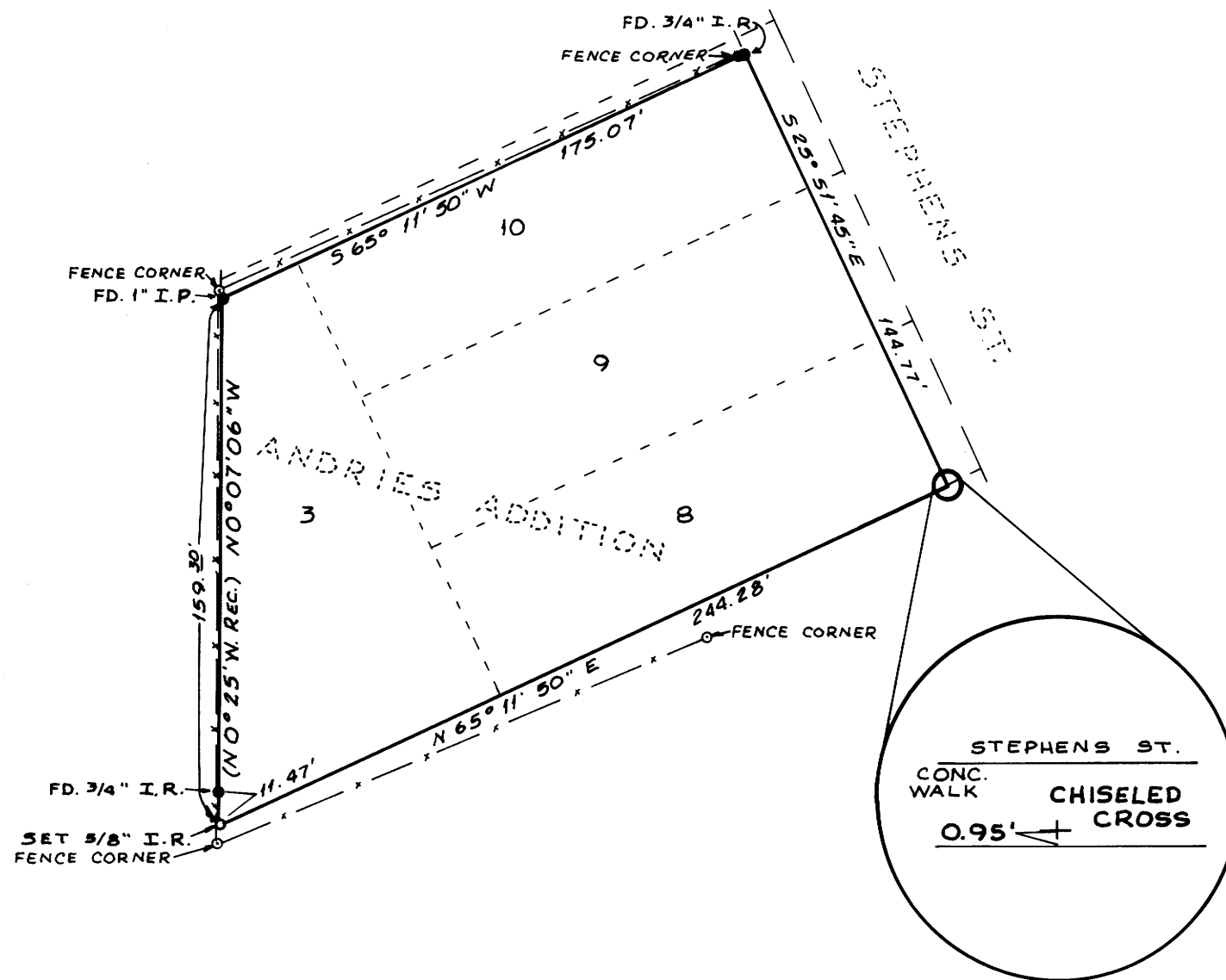
COUNTY SURVEYOR
DOUGLAS COUNTY, OREGON

**SURVEYED FOR JOSEPH FELIX
BY S & J ENGINEERING
OCTOBER 1976
SCALE 1" = 50'**



T27S R6W SEC.13

BASIS OF BEARINGS:
SURVEY BY DON E. GARRETT
MAY 1970. M39-69



MAP FILE M.61-65

MAP FILE M.61-65