

COUNTY SURVEYORS FILE DATA
DO NOT REMOVE FROM OFFICE

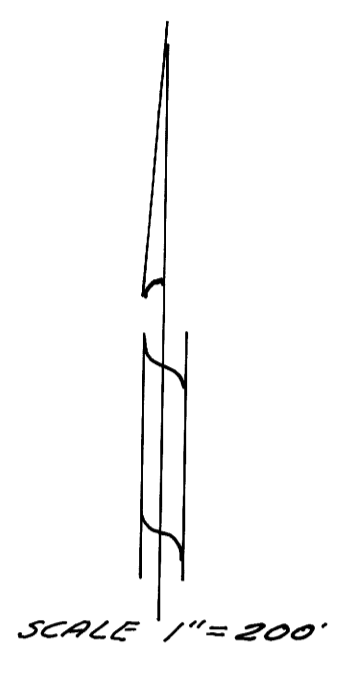
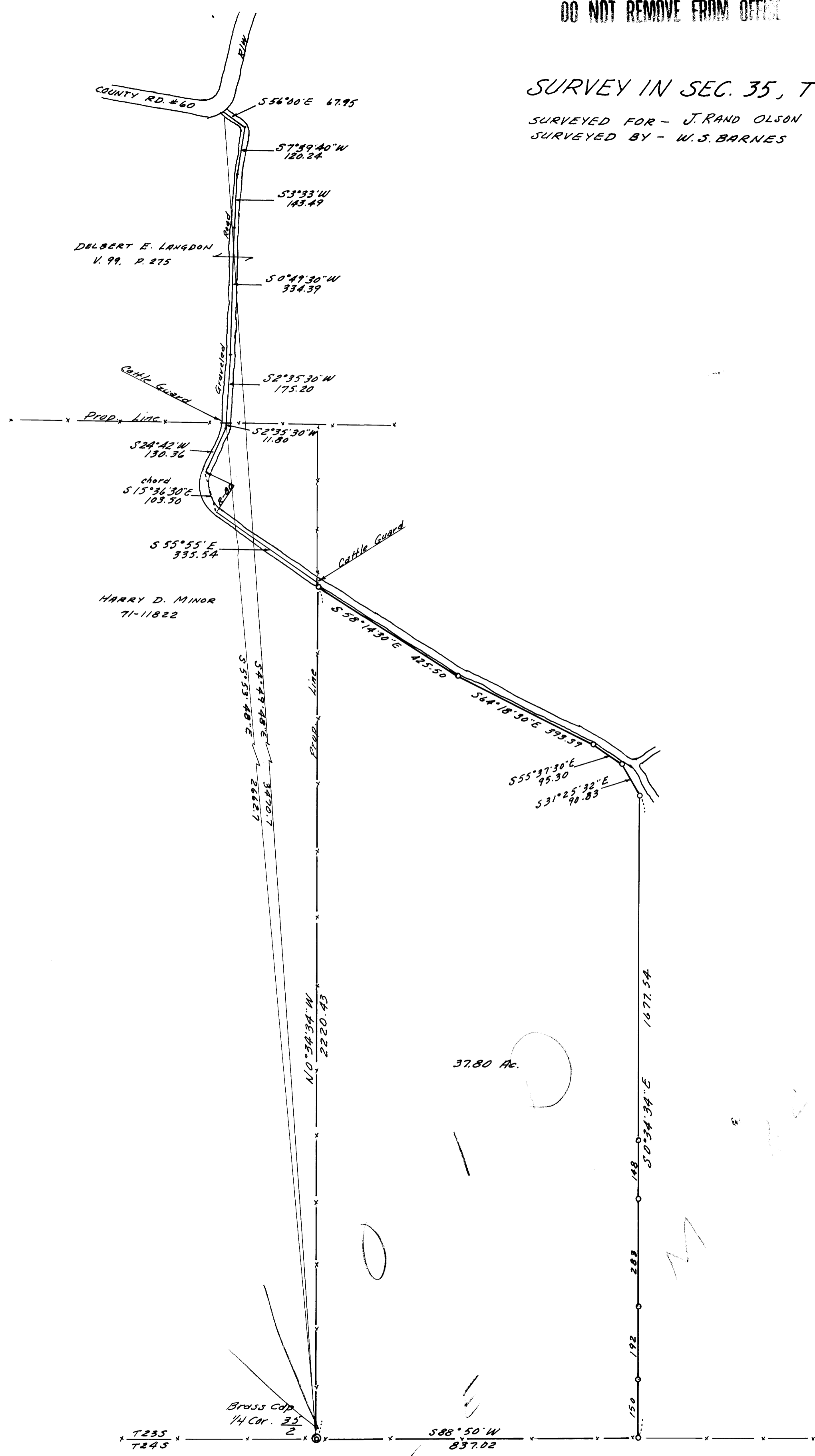
FILED 2
RECEIVED

OCT 11 1976
COUNTY SURVEYOR
DOUGLAS COUNTY, ORE

SURVEY IN SEC. 35, T 23 S, R 5 W. W. M.

SURVEYED FOR - J. RAND OLSON
SURVEYED BY - W. S. BARNES

OCT. 1976



o Denotes 5/8" iron rods set
Base bearing taken from N-S & Fence Sec. 35

