

FILED *v*  
RECEIVED MLL

OCT 8 1976

COUNTY SURVEYOR  
DOUGLAS COUNTY, ORE.

# SURVEY FOR E.L. WORKS

## SEC. 3 T. 28S., R. 6W., W. M.

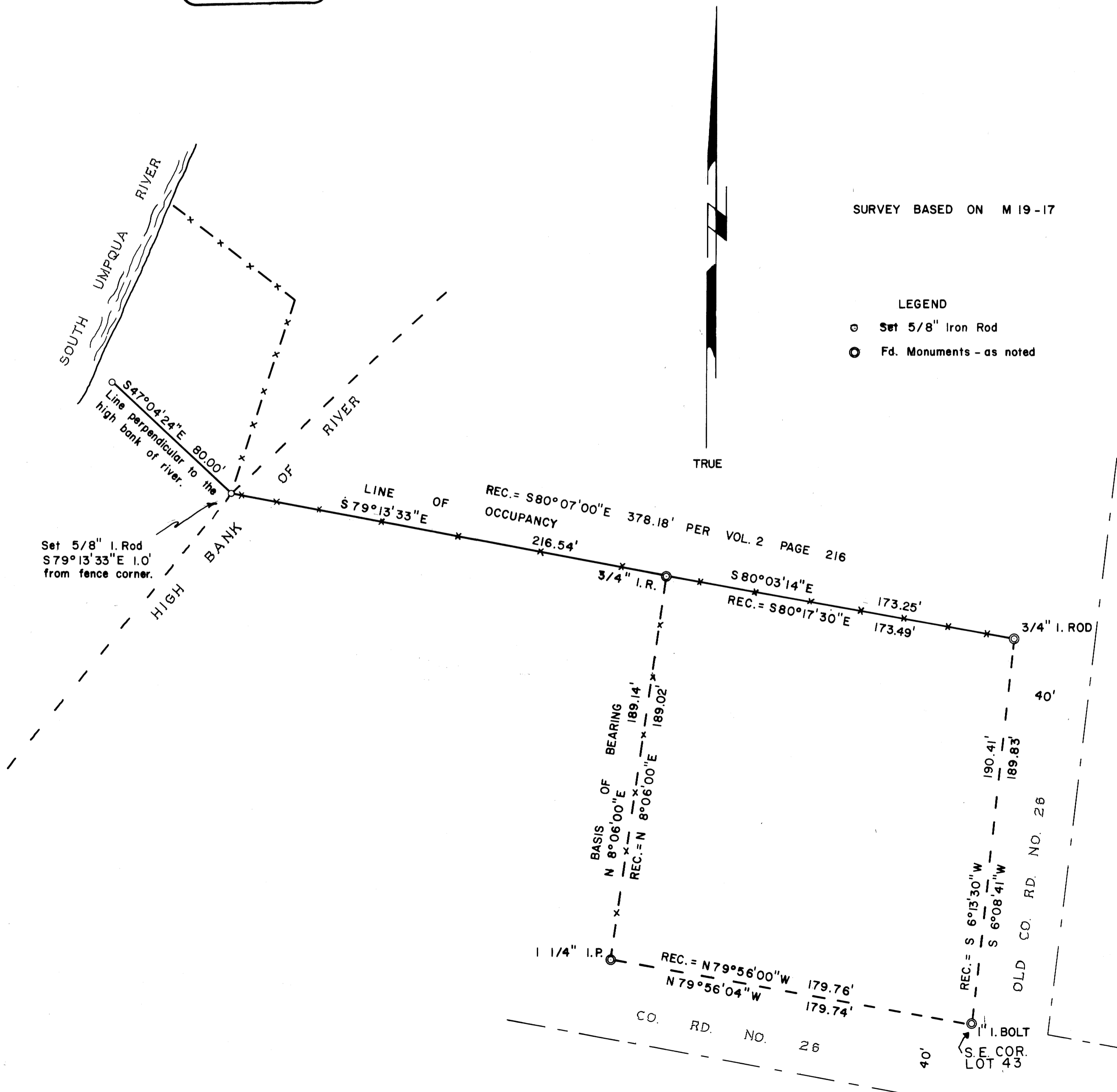
### PART LOT 43 PLAT H RSBG. HOME ORCHARD TRACTS

Surveyed by Douglas County Surveyor's Office  
Frances L. Ingram  
Scale: 1" = 40'  
County Surveyor  
September 1976

REGISTERED  
PROFESSIONAL  
LAND SURVEYOR

*Frances L. Ingram*

OREGON  
JULY 11, 1969  
FRANCIS L. INGRAM  
902



SURVEY BASED ON M 19-17

LEGEND

- Set 5/8" Iron Rod
- Fd. Monuments - as noted

TRUE

CS FILE FOLDER

CONTAINS

MORE

INFORMATION