

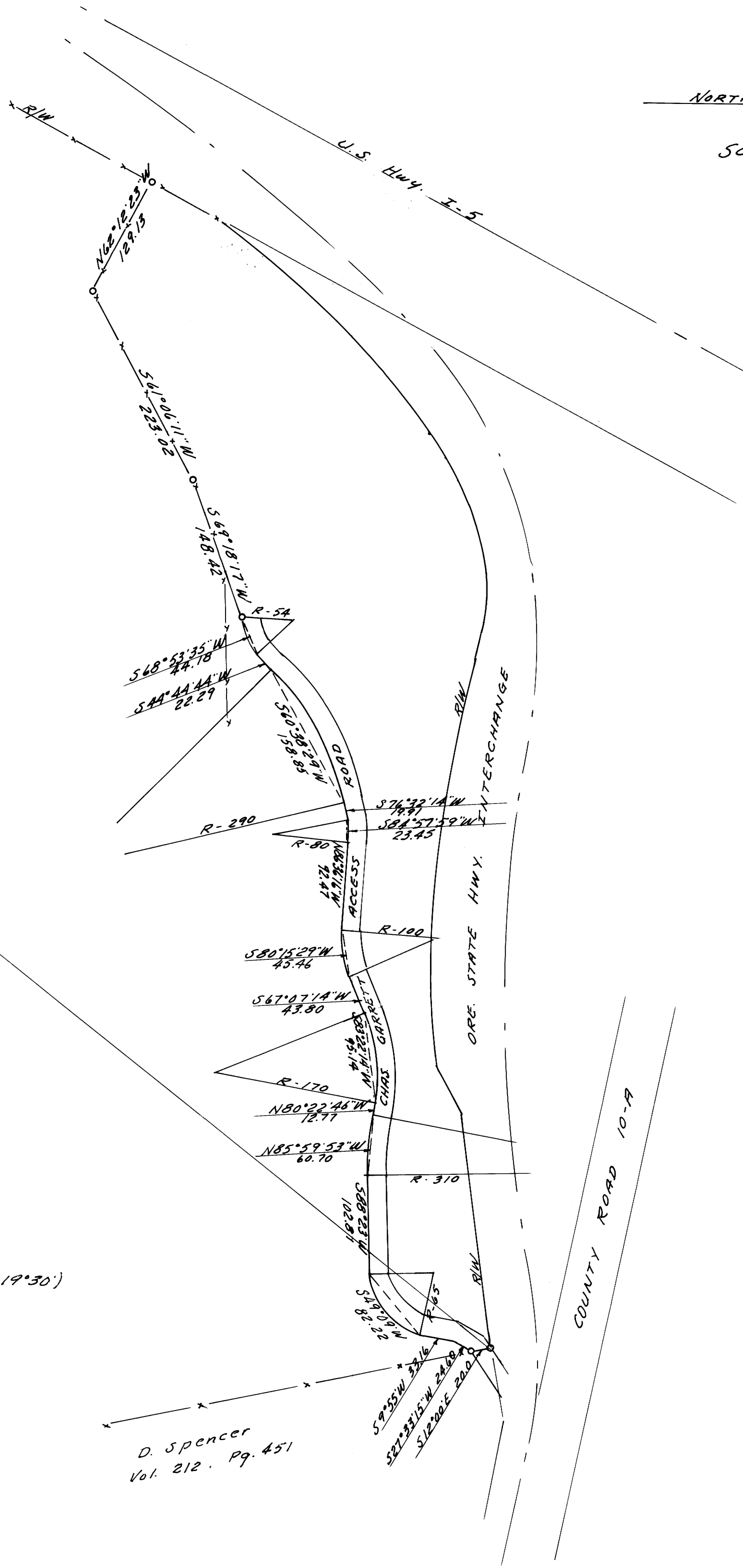
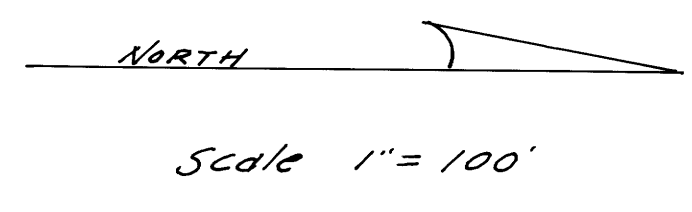
COUNTY SURVEYORS FILE DATA  
DO NOT REMOVE FROM OFFICE

SURVEY IN SEC. 5 7 & 8, T25S, R5W.

SURVEYED FOR - CHAS. GARRETT  
SURVEYED BY - W.S. BARNES

JULY 1976

FILED 2  
RECEIVED of  
JUL 28 1976  
COUNTY SURVEYOR  
DOUGLAS COUNTY, ORE  
7



1 1/2" I.P.  
1/4" COR.  
T25S, R5W

S 38° 18' 29" W  
1146.6

o Denotes 5/8" iron rods set.  
Base bearing taken from Mag. North (Var. 19° 30')

D. Spencer  
Vol. 212. Pg. 451

W. S. Barnes