

COUNTY SURVEYORS FILE DATA DO NOT REMOVE FROM OFFICE

FILED *J*
RECEIVED *J*

SEP 27 1976

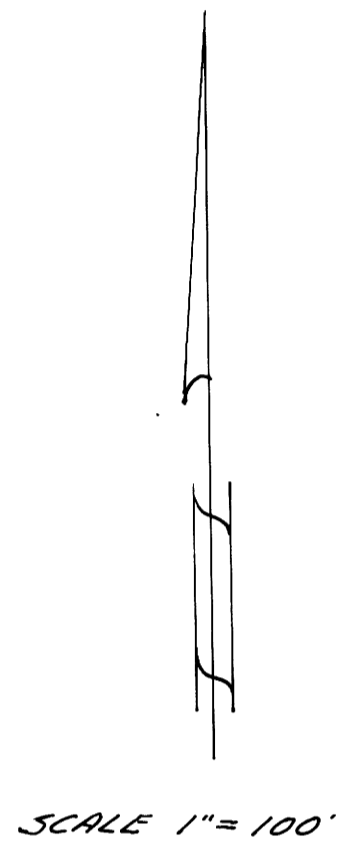
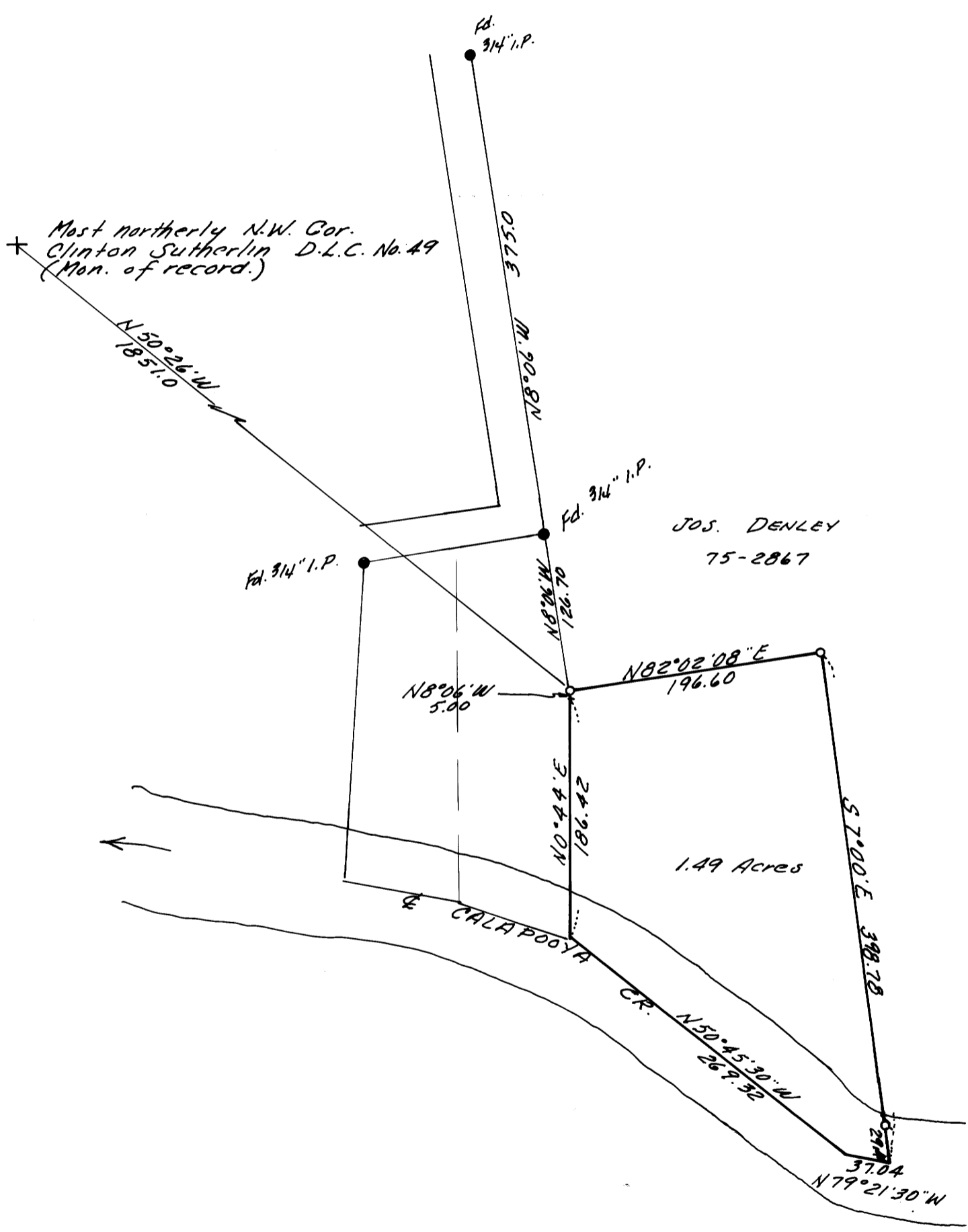
COUNTY SURVEYOR
DOUGLAS COUNTY, ORE.

SURVEY IN SEC. 9, T 25 S, R 4 W. W. M. DOUGLAS COUNTY, ORE.

SURVEYED FOR - ALBERT YOST
SURVEYED BY - W.S. BARNES

SEPT. 1976

J



o 5/8" iron rods set.
Base bearing taken from west property line of Denley.
Refr. - C.S. Map M1-13