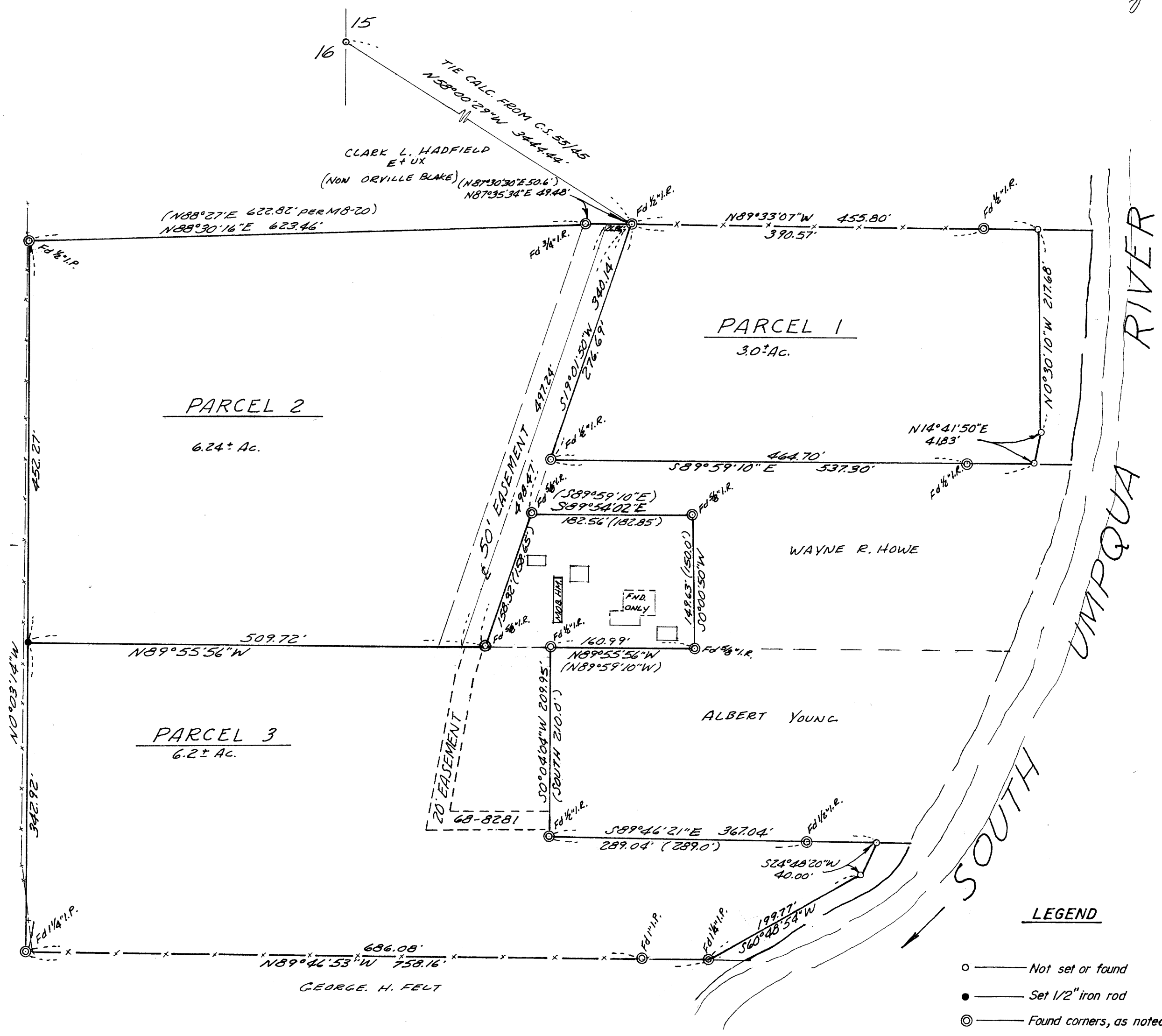


MINOR LAND PARTITION IN SECTION 15, T.27S. R.6W.W.M. APRIL 1976 SCALE: 1"=100'

COUNTY SURVEYORS FILE DATA
DO NOT REMOVE FROM OFFICE

FILED &
RECEIVED *WJ*
MAY 15 1976
COUNTY SURVEYOR
DOUGLAS COUNTY, ORE.
7

MAP FILE M61-41A



REGISTERED
PROFESSIONAL
LAND SURVEYOR
Eugene A. Bloom
OREGON
MAY 18, 1960
EUGENE A. BLOOM
492

LEGEND
○ — Not set or found
● — Set 1/2" iron rod
⊙ — Found corners, as noted

MAP FILE M61-41A