

JOINT SURVEYORS FILE DATA  
DO NOT REMOVE FROM OFFICE

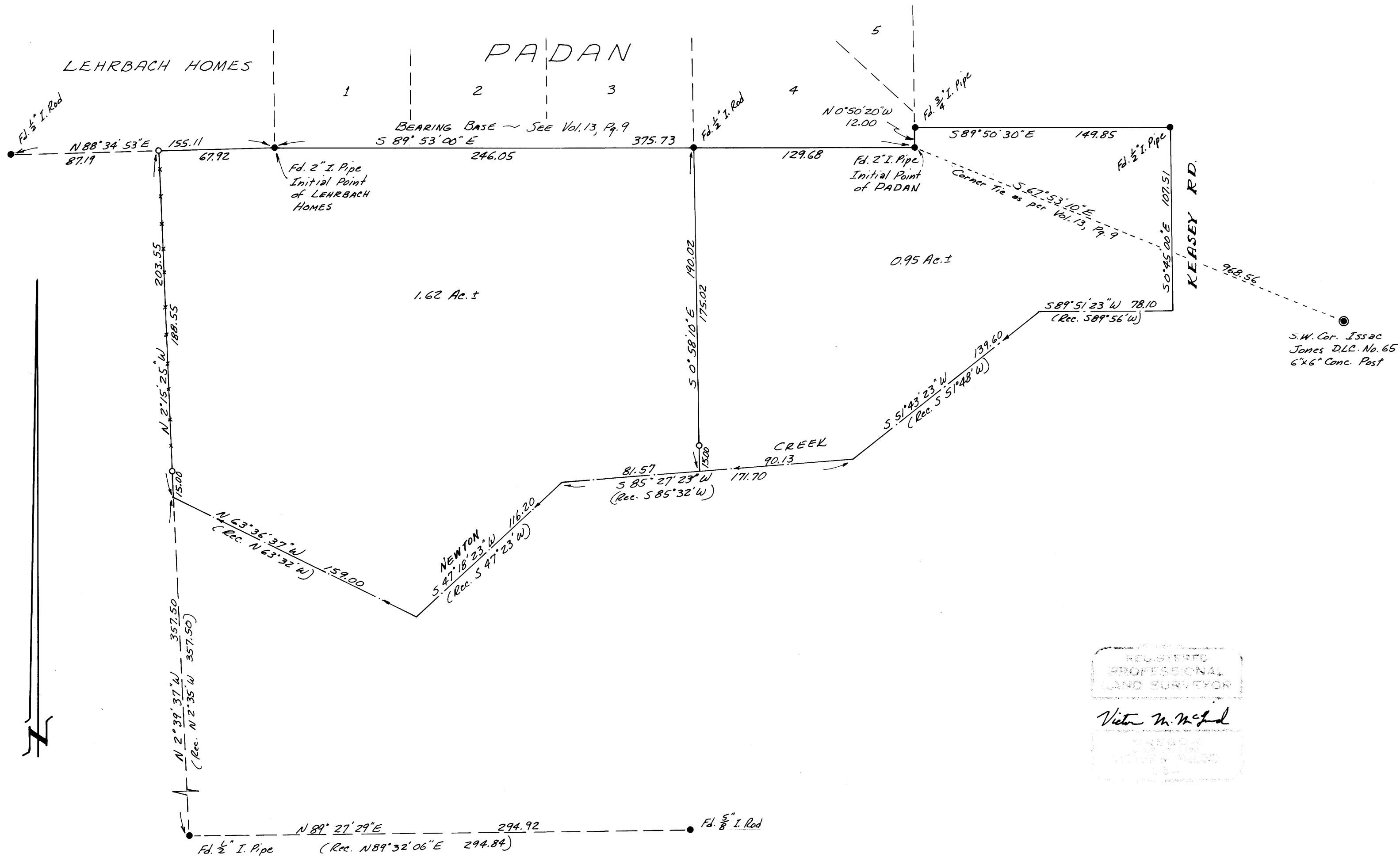
SURVEY IN SEC. 14, T27S, R6W, WM.  
Surveyed for Ruth Jacobson by Victor M. McLind  
August 1976 Scale: 1" = 50'

FILED  
RECEIVED

AUG 18 1976

COUNTY SURVEYOR  
DOUGLAS COUNTY, ORE.

o ~ Indicates Set  $\frac{5}{8}$ " x 30" Iron Rod



REGISTERED  
PROFESSIONAL  
LAND SURVEYOR  
Victor M. McLind  
COUNTY SURVEYOR

MAP FILE M 61-22

MAP FILE M 61-22