

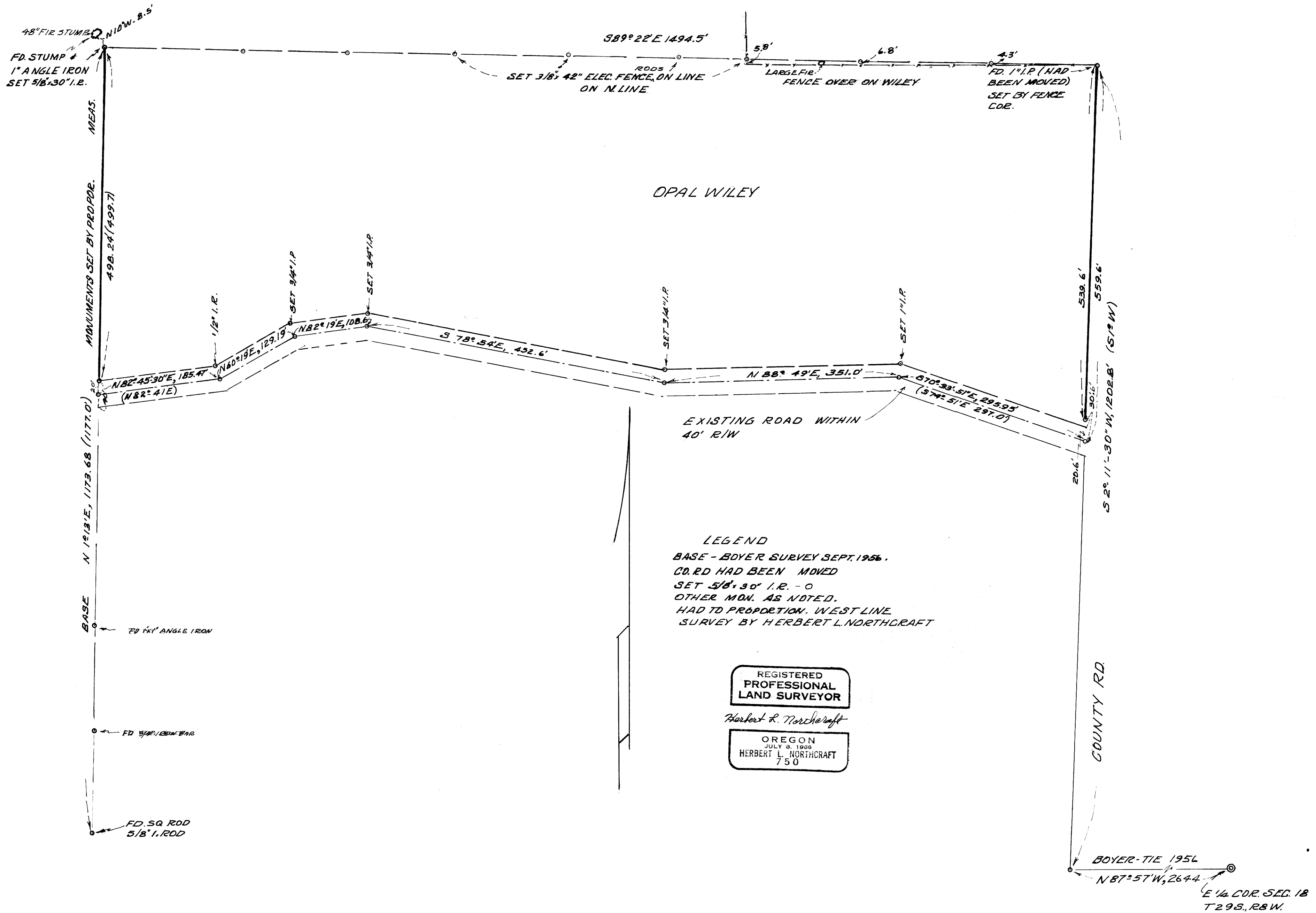
COUNTY SURVEYORS FILE DATA  
DO NOT REMOVE FROM OFFICE

SURVEY TO ESTABLISH ROAD RIW & FIND CORNERS  
OF SURVEY SEPT. 1956, IN SEC. 18, T29S., R.8W., W.M., DOUGLAS CO., ORE.  
FOR OPAL WILEY GAMAS VALLEY, ORE.

SCALE 1"=100' AUG. 1976

FILED  
RECEIVED  
AUG 13 1976  
COUNTY SURVEYOR  
DOUGLAS COUNTY, ORE.

MAP FILE M 61-19



MAP FILE M 61-19