

FILED
RECEIVED
AUG 11 1976
COUNTY SURVEYOR
DOUGLAS COUNTY, ORE

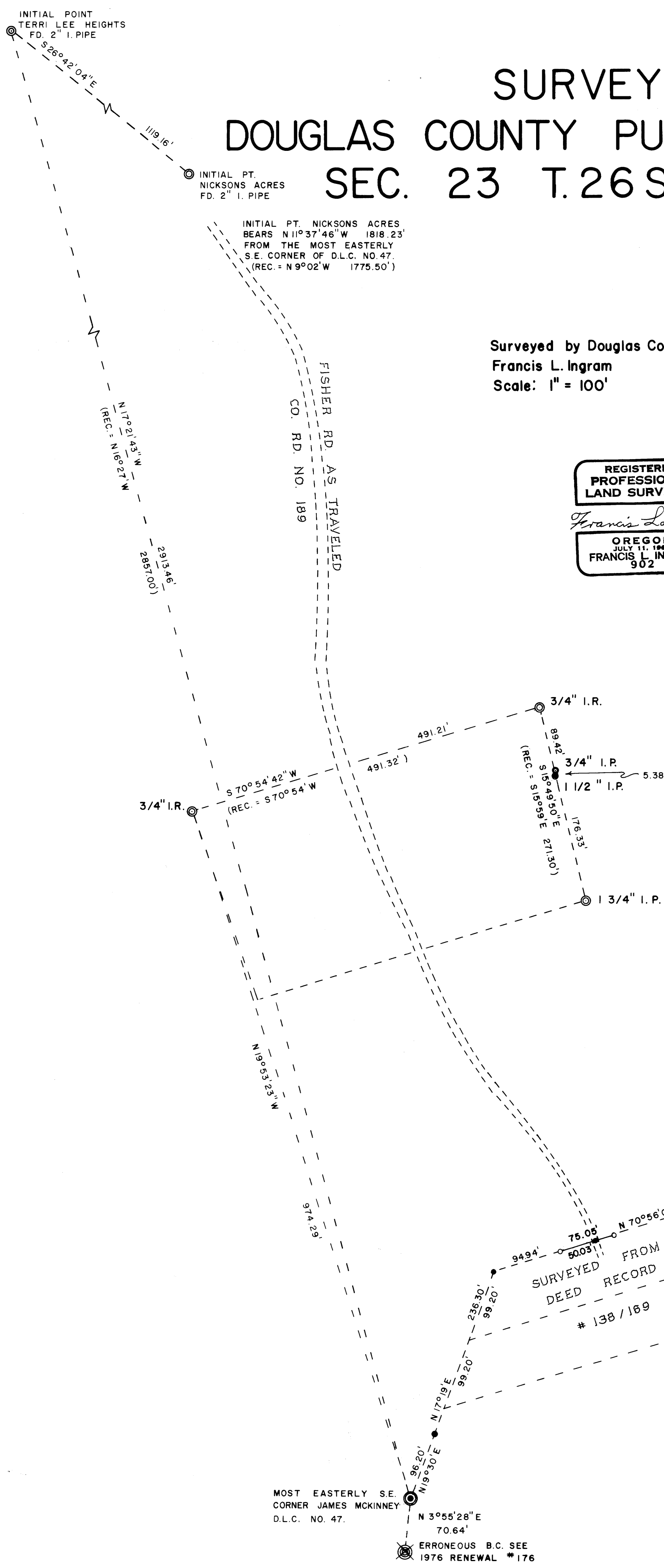
SURVEY FOR DOUGLAS COUNTY PUBLIC WORKS DEPT. SEC. 23 T.26S., R. 6 W., W.M.

Surveyed by Douglas County Surveyor's Office
Francis L. Ingram County Surveyor
Scale: 1" = 100' July 1976

REGISTERED
PROFESSIONAL
LAND SURVEYOR

Francis L. Ingram

OREGON
JULY 11, 1969
FRANCIS L. INGRAM
902



NOTE: Bearings and distances shown are True. Survey based on the Oregon State Plane Coordinate System, South Zone, using the following control stations:

NU-5	606,139.810 N
	1,234,973.400 E
NU-7	604,004.423 N
	1,237,824.390 E

- LEGEND**
- ⊙ Fd. monuments as noted
 - ⊗ Fd. Brass Cap
 - ⊙ Set Brass Cap
 - Computed - not set
 - Set 5/8" Iron Rod



CS FILE FOLDER

CONTAINS

MORE

INFORMATION