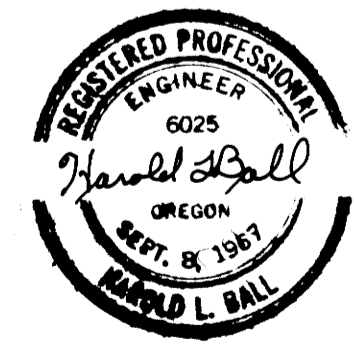
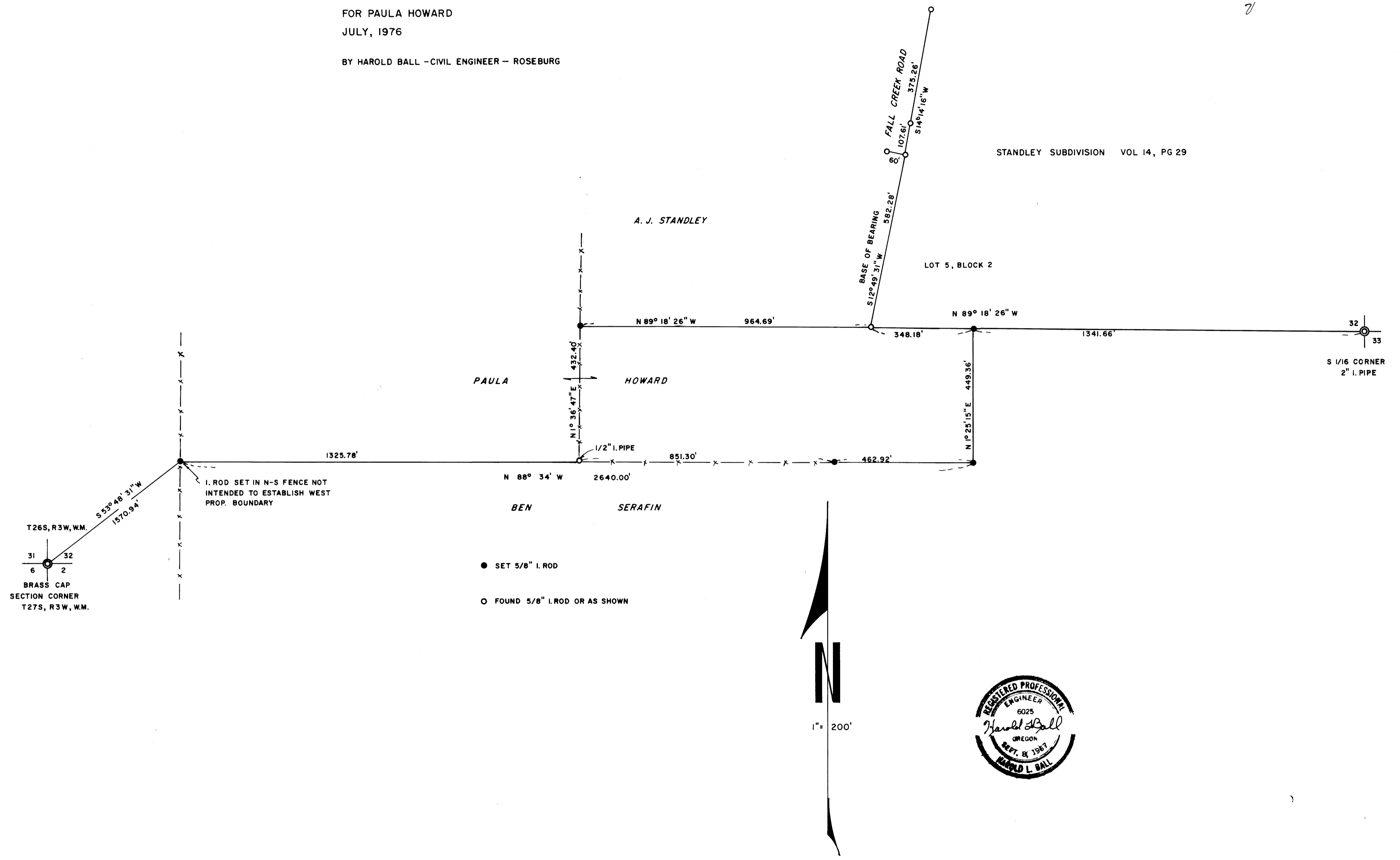


FILED ✓  
RECEIVED 27  
AUG 5 1976  
COUNTY SURVEYOR  
DOUGLAS COUNTY, OREG.  
✓

SURVEY FOR BOUNDARY LINE AGREEMENT  
FOR PAULA HOWARD  
JULY, 1976  
BY HAROLD BALL - CIVIL ENGINEER - ROSEBURG

STANDLEY SUBDIVISION VOL 14, PG 29

MAP FILE M.61-15



MAP FILE M.61-15