

SURVEY TO SET PROPERTY CORNERS

LOTS 5, 6, BLOCK 14, AMENDED PLAT TOWNSITE OF SUTHERLIN

FOR: TIM MICHELS — BY: BAUGHMAN SURVEYING SERVICE

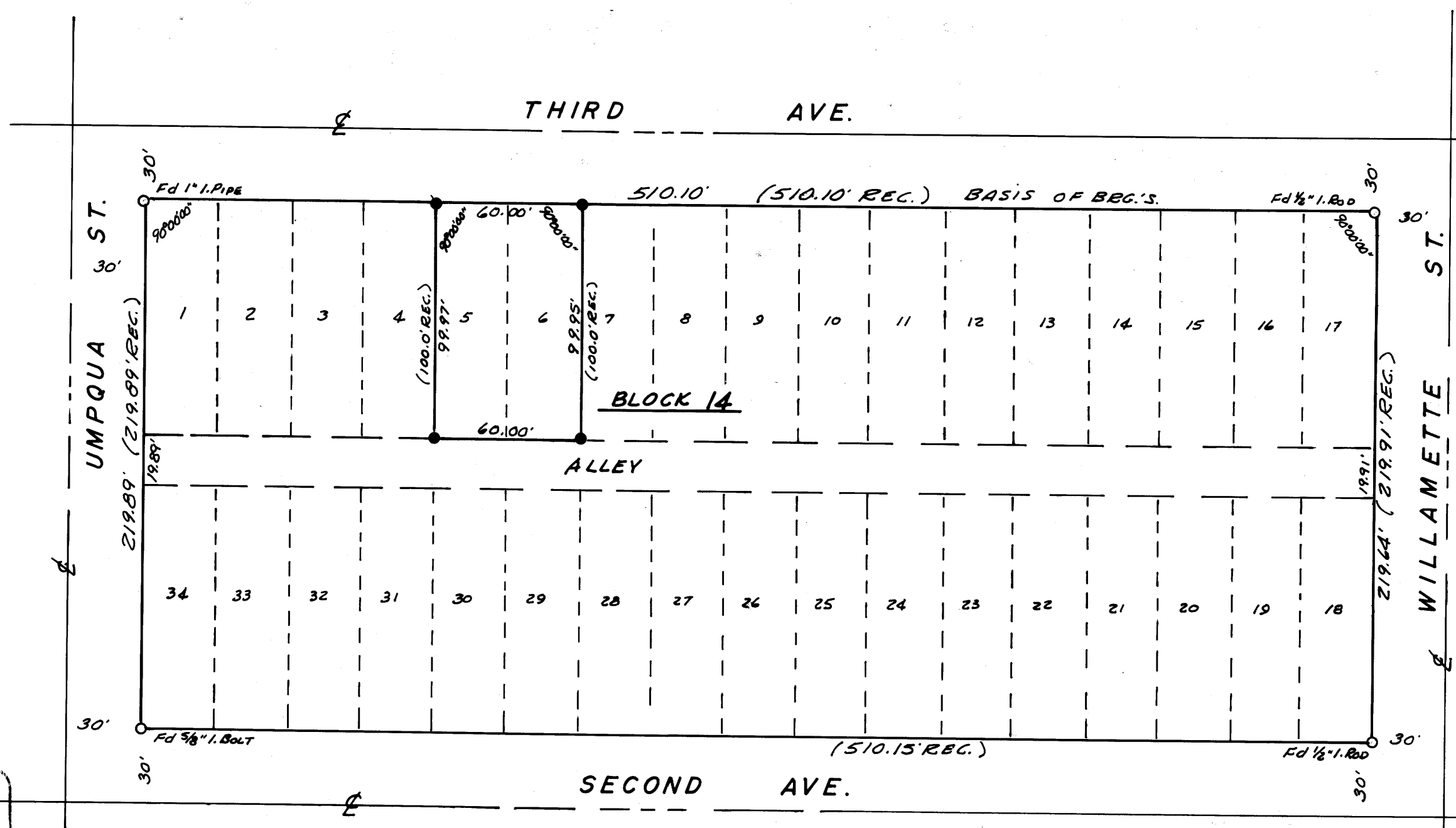
COUNTY SURVEYORS FILE DATA
DO NOT REMOVE FROM OFFICE

JULY 1976

SCALE: 1" = 50'

LEGEND

- — Set 5/8" iron rod
- — Found point, as noted



Based on Amended Plat Townsite of Sutherlin

REGISTERED
PROFESSIONAL
LAND SURVEYOR

Eugene A. Bloom

OREGON
MAY 13, 1960
EUGENE A. BLOOM
492

COUNTY SURVEYOR
DOUGLAS COUNTY, ORE.

FILED
RECEIVED
AUG 3 1976

36477

SEC. 17 T.25S. R.5W.W.M.

MAP FILE M61-13