

SURVEY TO SET PROPERTY CORNERS

LOTS 21, 22, 23, 24, BLOCK 21, AMENDED PLAT TOWNSITE OF SUTHERLIN

FOR: JAMES STRICKLAND — BY: BAUGHMAN SURVEYING SERVICE

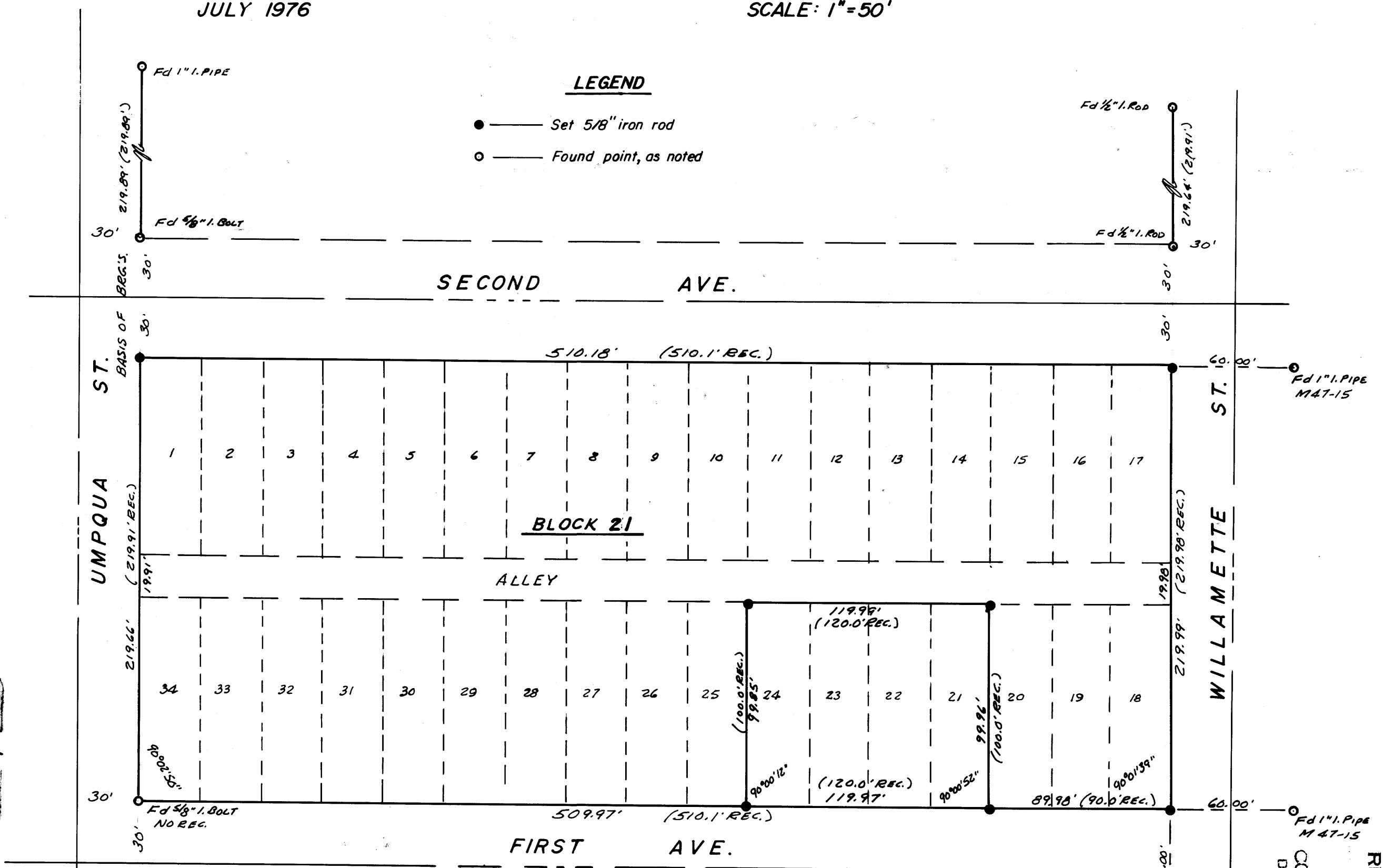
JULY 1976

SCALE: 1"=50'

LEGEND

- — Set 5/8" iron rod
- — Found point, as noted

Based on Amended Plat Townsite of Sutherlin



REGISTERED
PROFESSIONAL
LAND SURVEYOR

Eugene A. Bloom

OREGON
MAY 13, 1960
EUGENE A. BLOOM
492

FILED
RECEIVED
AUG 3 1976
COUNTY SURVEYOR
DUGLAS COUNTY, ORE.
479

SEC. 17, T25S, R.5W, W.1M.

MAP FILE M61-12

MAP FILE M61-12