

# SURVEY TO SET PROPERTY CORNERS IN SECTION 17, T.27S. R.6W.W.M.

FOR: R.H.GEE & ERIC GUSTAFSON  
BY: BAUGHMAN SURVEYING SERVICE

JUNE 1976

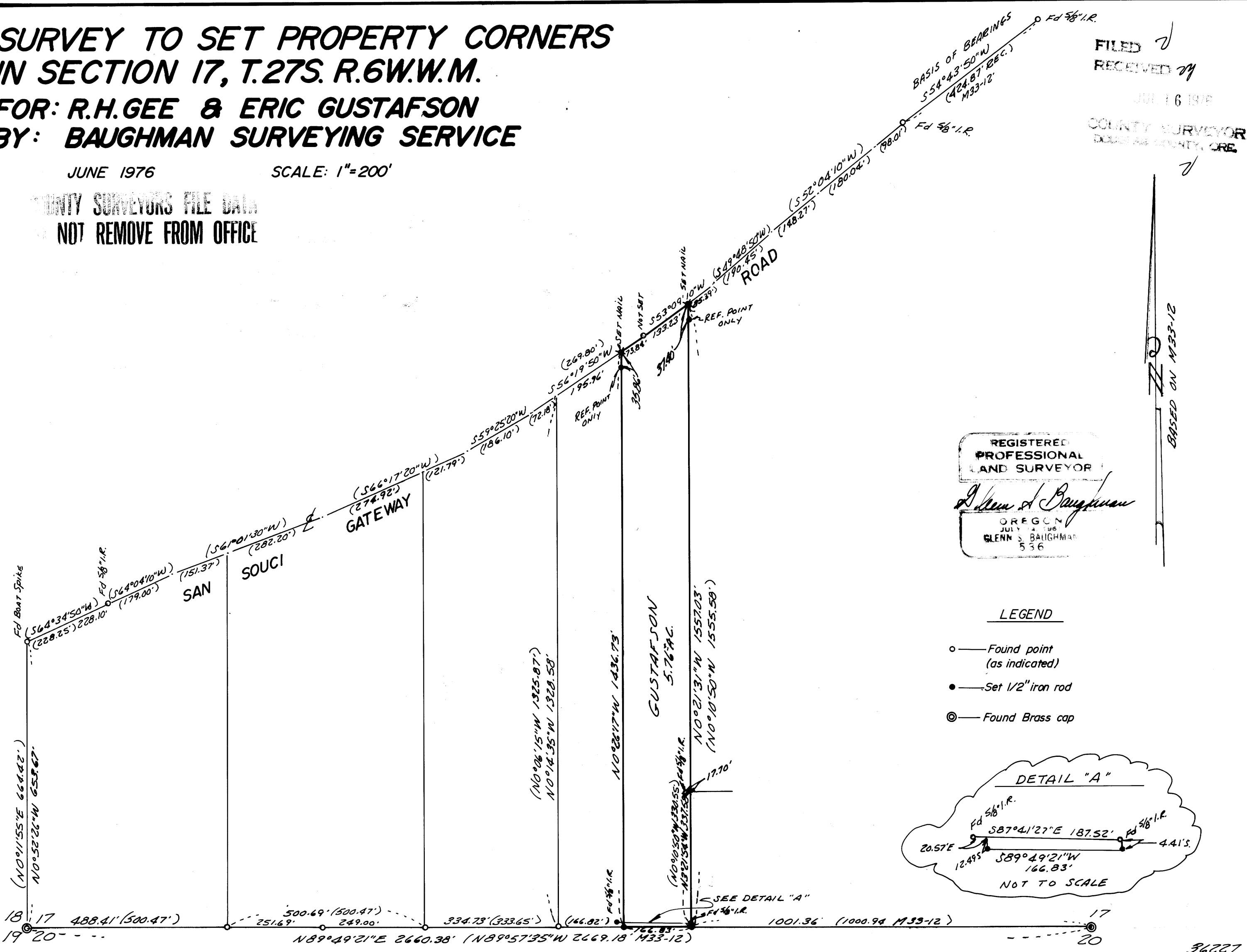
SCALE: 1"=200'

COUNTY SURVEYORS FILE DATA  
NOT REMOVE FROM OFFICE

FILED  
RECEIVED

JUL 16 1976

COUNTY SURVEYOR  
DEWEESE COUNTY, ORE.



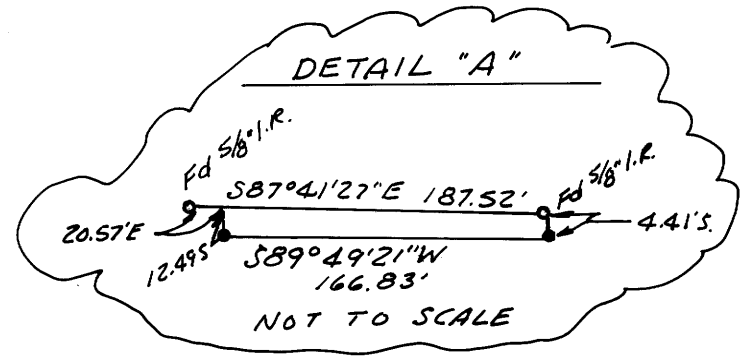
REGISTERED  
PROFESSIONAL  
LAND SURVEYOR

*Glenn S. Baughman*

OREGON  
JULY 14, 1968  
GLENN S. BAUGHMAN  
536

LEGEND

- — Found point (as indicated)
- — Set 1/2" iron rod
- ⊙ — Found Brass cap



BASED ON M33-12

MAP FILE M.60 - 80

MAP FILE M.60 - 80

36227