

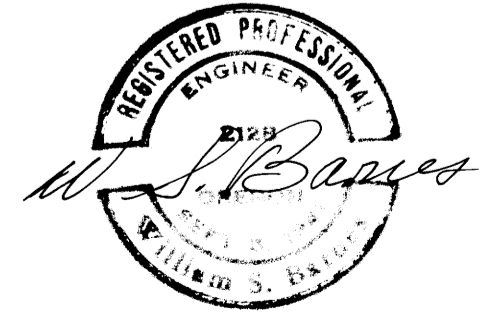
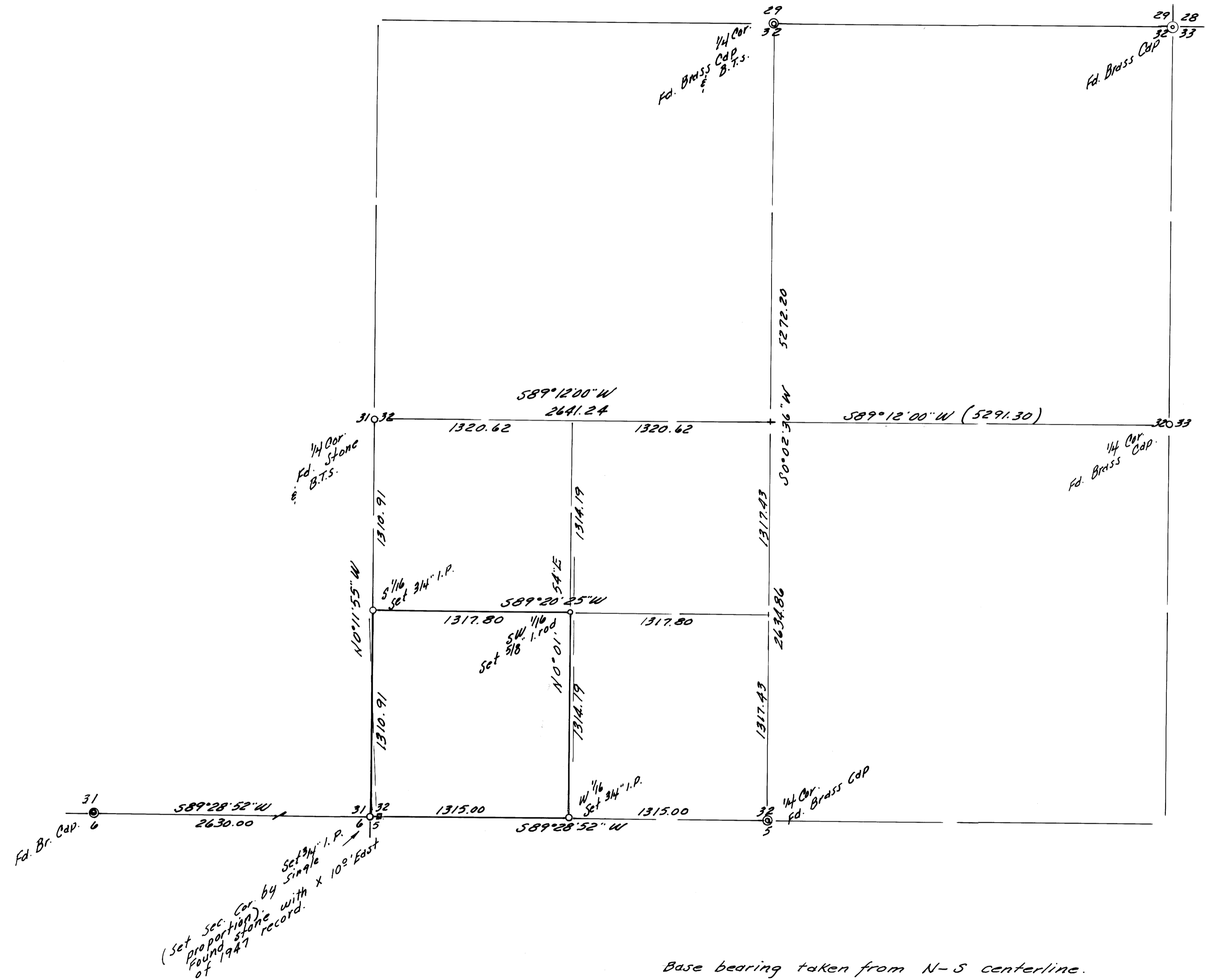
COUNTY SURVEYORS FILE DATA
DO NOT REMOVE FROM OFFICE

SURVEY IN SEC. 32, T 24 S, R 4 W. W. M.
DOUGLAS COUNTY, ORE.
SURVEYED FOR- RICHARD MCGARVEY
SURVEYED BY- W.S. BARNES
JULY 1976
SCALE 1"=50'

FILED
RECEIVED

JUL 12 1976
COUNTY SURVEYOR
DOUGLAS COUNTY, ORE.

MAP FILE... 60... 70...



MAP FILE... 60... 70...