

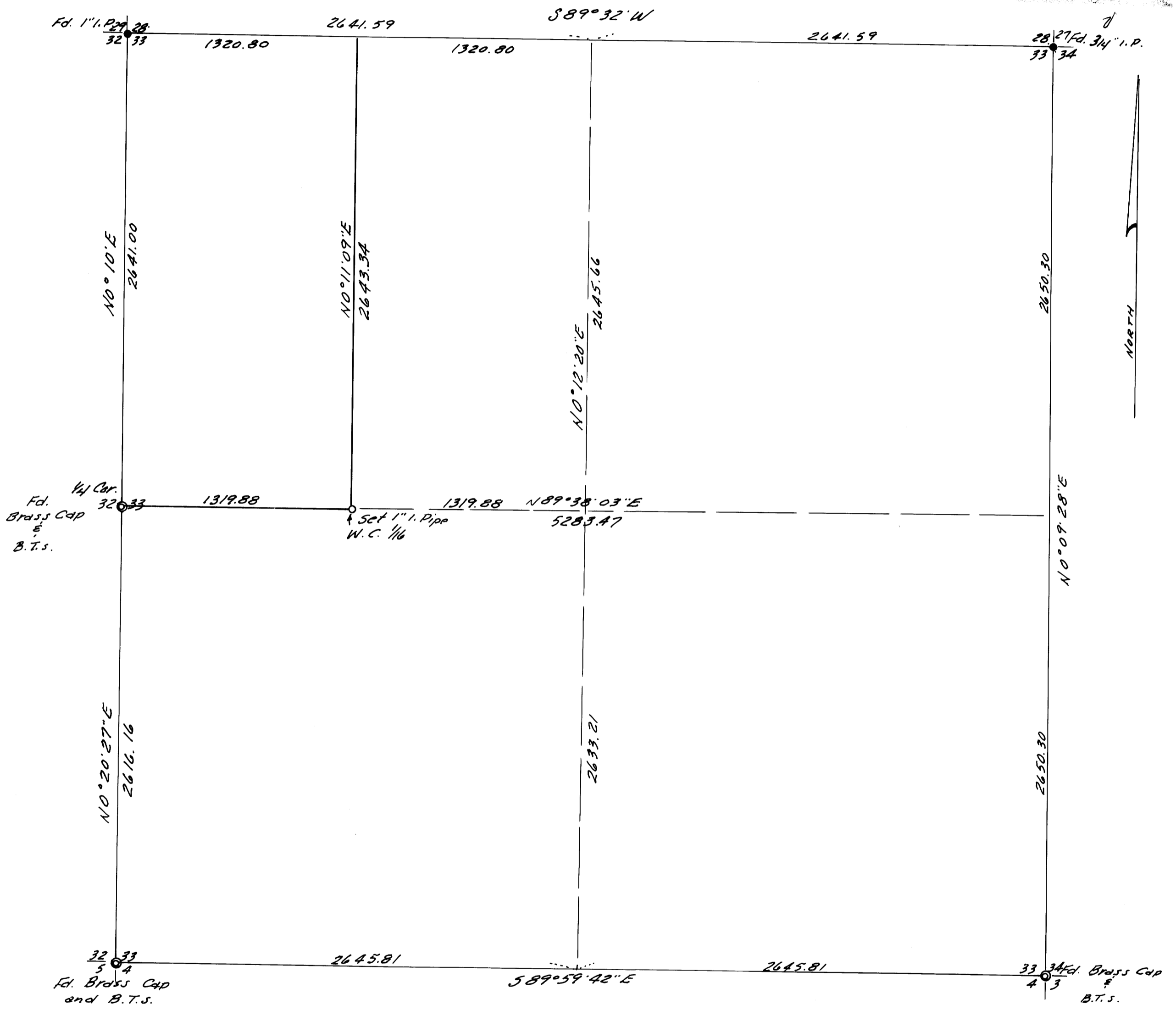
COUNTY SURVEYORS FILE DATA  
DO NOT REMOVE FROM OFFICE

SURVEY IN SEC. 33, T28S, R5W. W.M.

SURVEYED FOR - WESTERN STATES FARMS & RANCHES  
SURVEYED BY - W.S. BARNES

JUNE 1976  
SCALE 1"=50'

FILED ✓  
RECEIVED ✓  
JUN 7 1976  
COUNTY SURVEYOR  
JAMES H. HAYES



Note: Base bearing taken from north line of Sec. 33.

