

SECT 4, T.23 S., R 5 W. W. M.

Survey for deed description

June 16, 1976

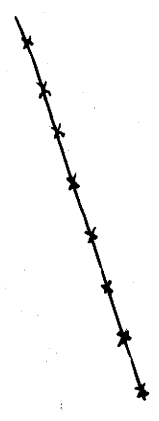
Scale 1" = 100'

For city of you call A

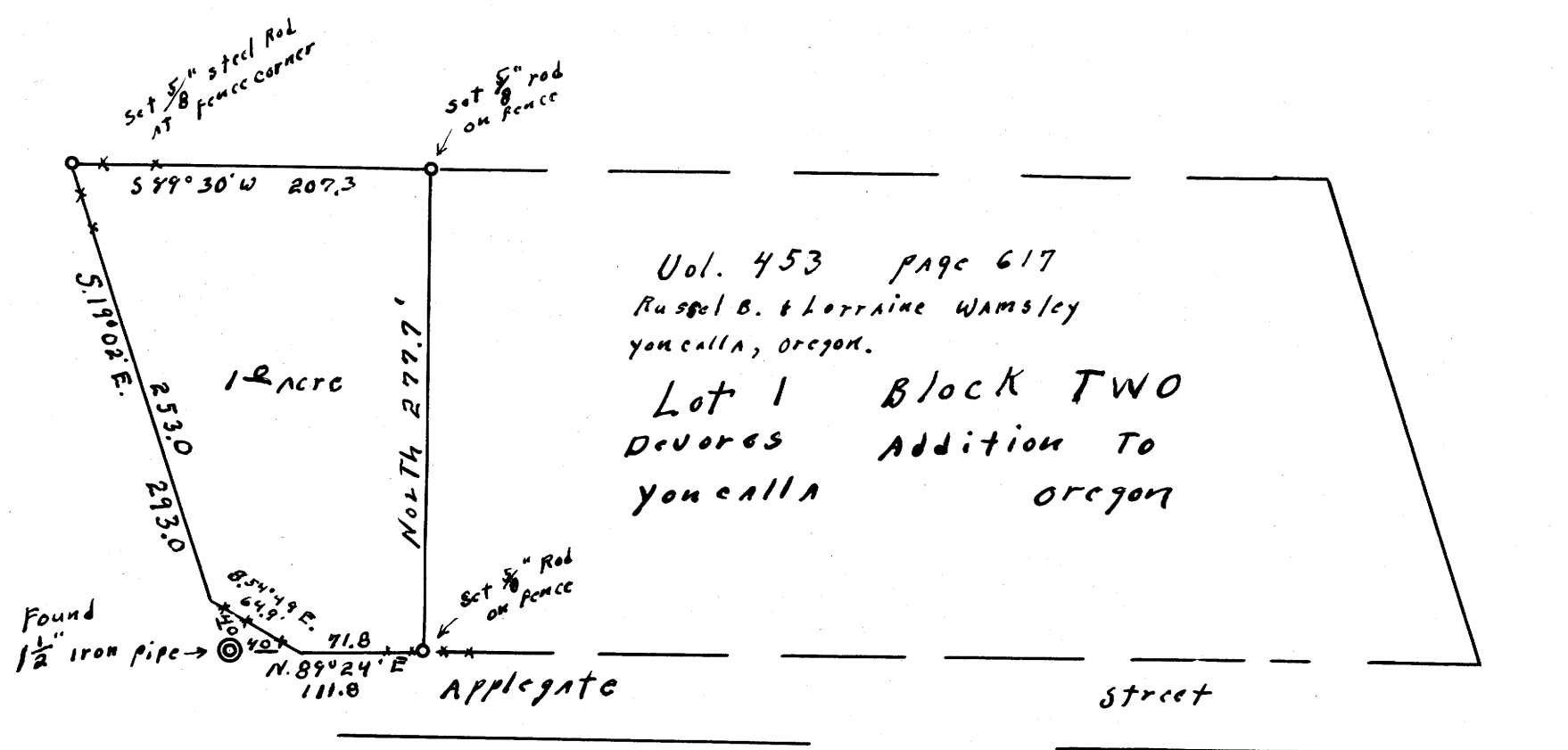
FILED 7
RECEIVED 24

JUN 29 1976

COUNTY SURVEYOR
DOUGLAS COUNTY, ORE.



North
Based on N19°W plat of
Devores Addition



REGISTERED
OREGON
LAND SURVEYOR
Wilford N. Haines
MAY 7, 1948
WILFORD N. HAINES
239

Beginning at a point on the south line of Lot 1 Block Two Devores Addition to you call A from which point the SW corner of said Lot 1 bears West 40.0 feet, Thence East 91.8 feet to a point Thence North 277.7 feet more or less to the North line of said Lot 1, Thence West 207.3 feet to the North West corner of said Lot 1, Thence S. 19° E 253.0 feet more or less to a point 40.0 feet N. 19° W, from the SW corner, Thence S 19° 08' E. 64.9 feet to the point of beginning