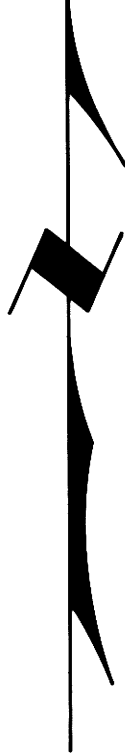
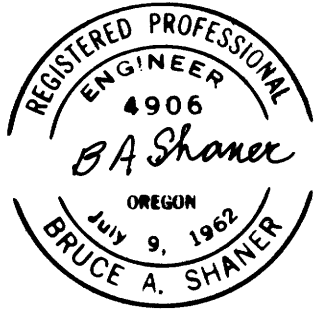


FILED
RECEIVED MS

JUN 15 1976

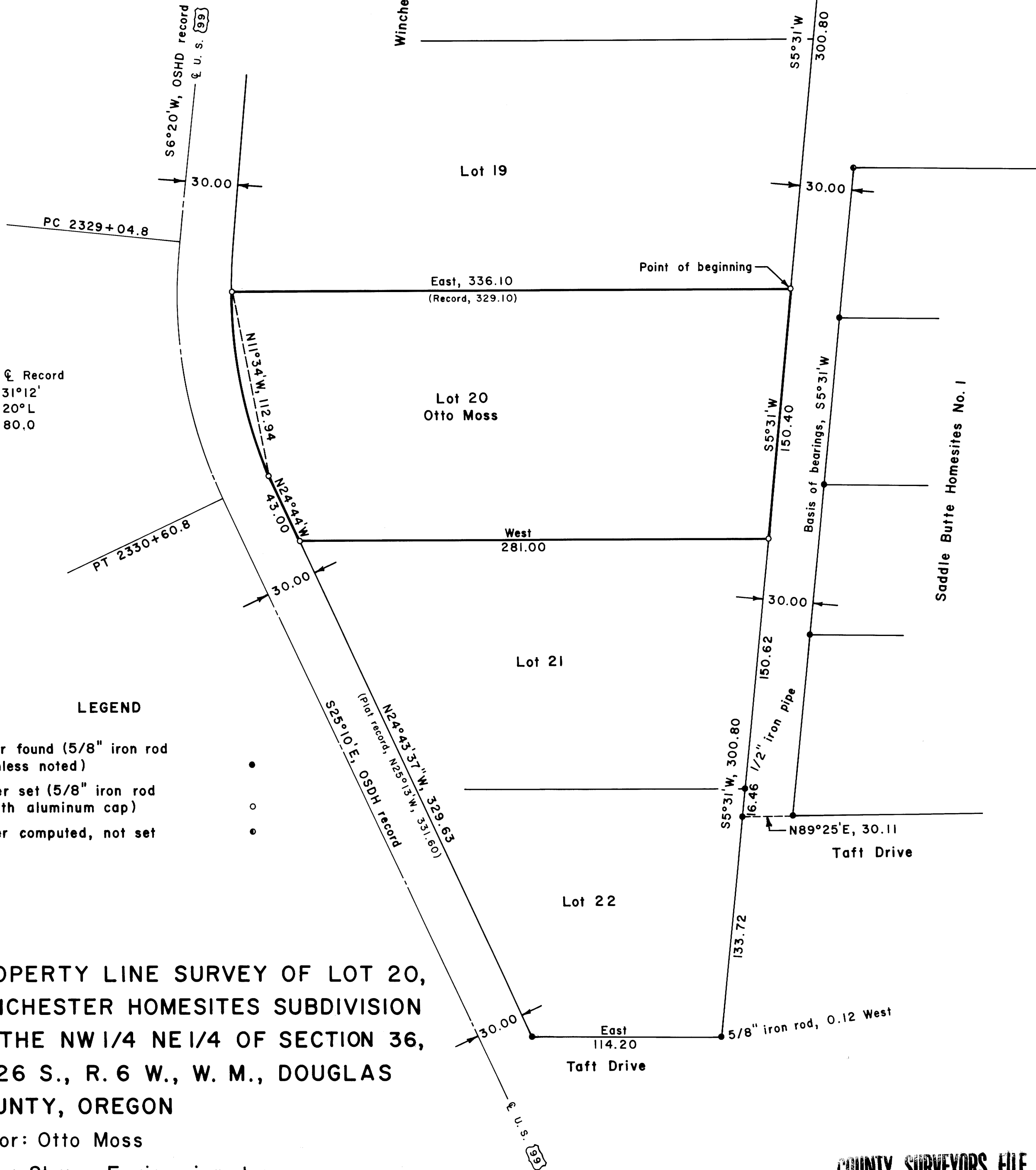
COUNTY SURVEYOR
DOUGLAS COUNTY, ORE.



Basis of bearings,
West boundary of Saddle
Butte Homesites No. 1



Scale: 1" = 50'



OSHD & Record
Δ = 31°12'
D = 20°L
T = 80.0

LEGEND

- Corner found (5/8" iron rod unless noted) •
- Corner set (5/8" iron rod with aluminum cap) ○
- Corner computed, not set ◦

PROPERTY LINE SURVEY OF LOT 20,
WINCHESTER HOMESITES SUBDIVISION
IN THE NW 1/4 NE 1/4 OF SECTION 36,
T. 26 S., R. 6 W., W. M., DOUGLAS
COUNTY, OREGON

For: Otto Moss

By: Shaner Engineering, Inc.

June 15, 1976

COUNTY SURVEYORS FILE DATA
DO NOT REMOVE FROM OFFICE