

COUNTY SURVEYORS FILE DATA
DO NOT REMOVE FROM OFFICE

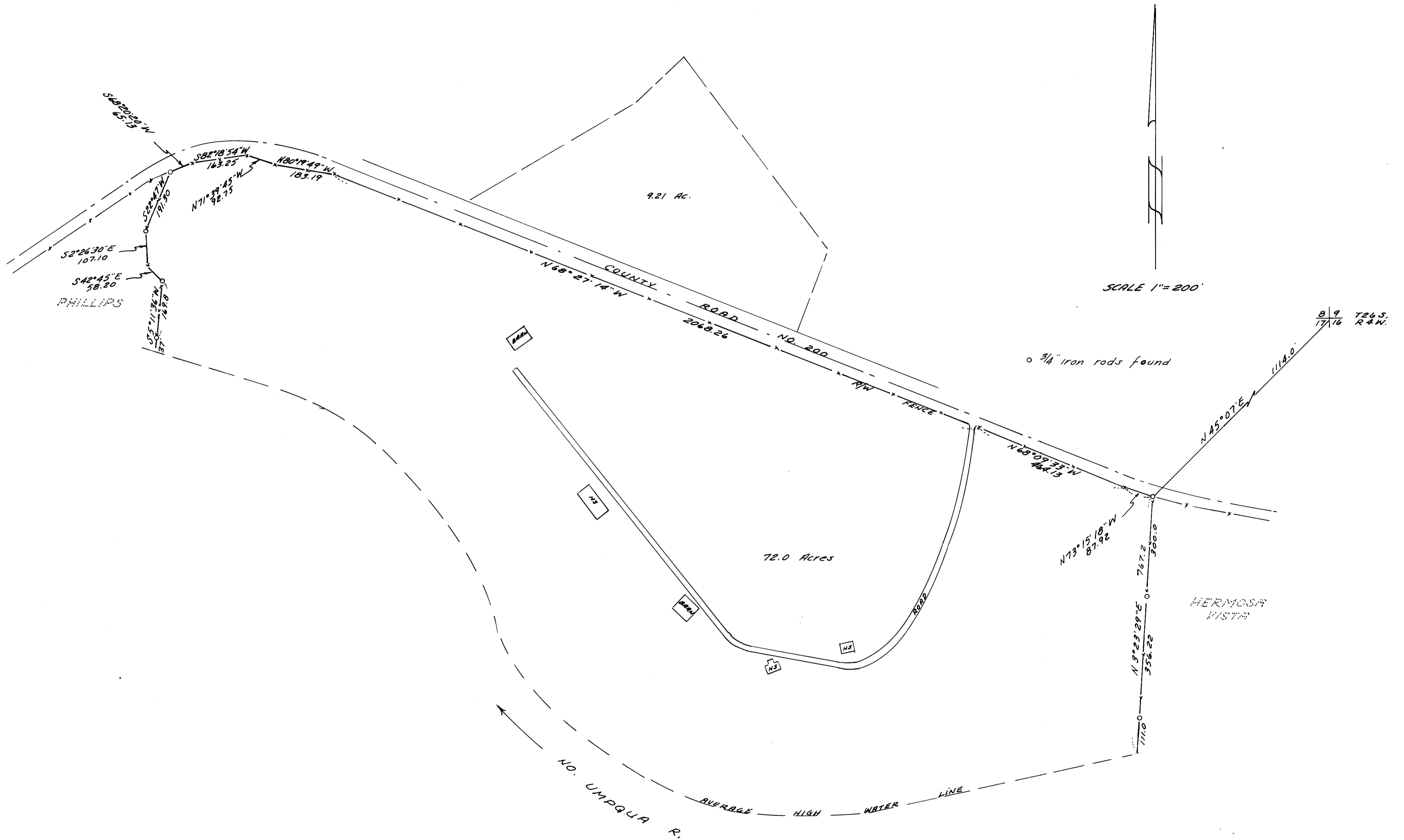
SURVEY OF I. A. STEPHEN'S PROPERTY

IN SECTIONS 8 & 17, T26S, R4W, W.M.
SURVEYED FOR - JIM BEVANS
SURVEYED BY - W.S. BARNES

JAN. 1976

FILED ✓
RECEIVED mmc
JUN 23 1976
COUNTY SURVEYOR
DOUGLAS COUNTY, ORE.
✓

MAP FILE 1160574



SCALE 1" = 200'

W. S. Barnes

MAP FILE

MAP FILE 1160574