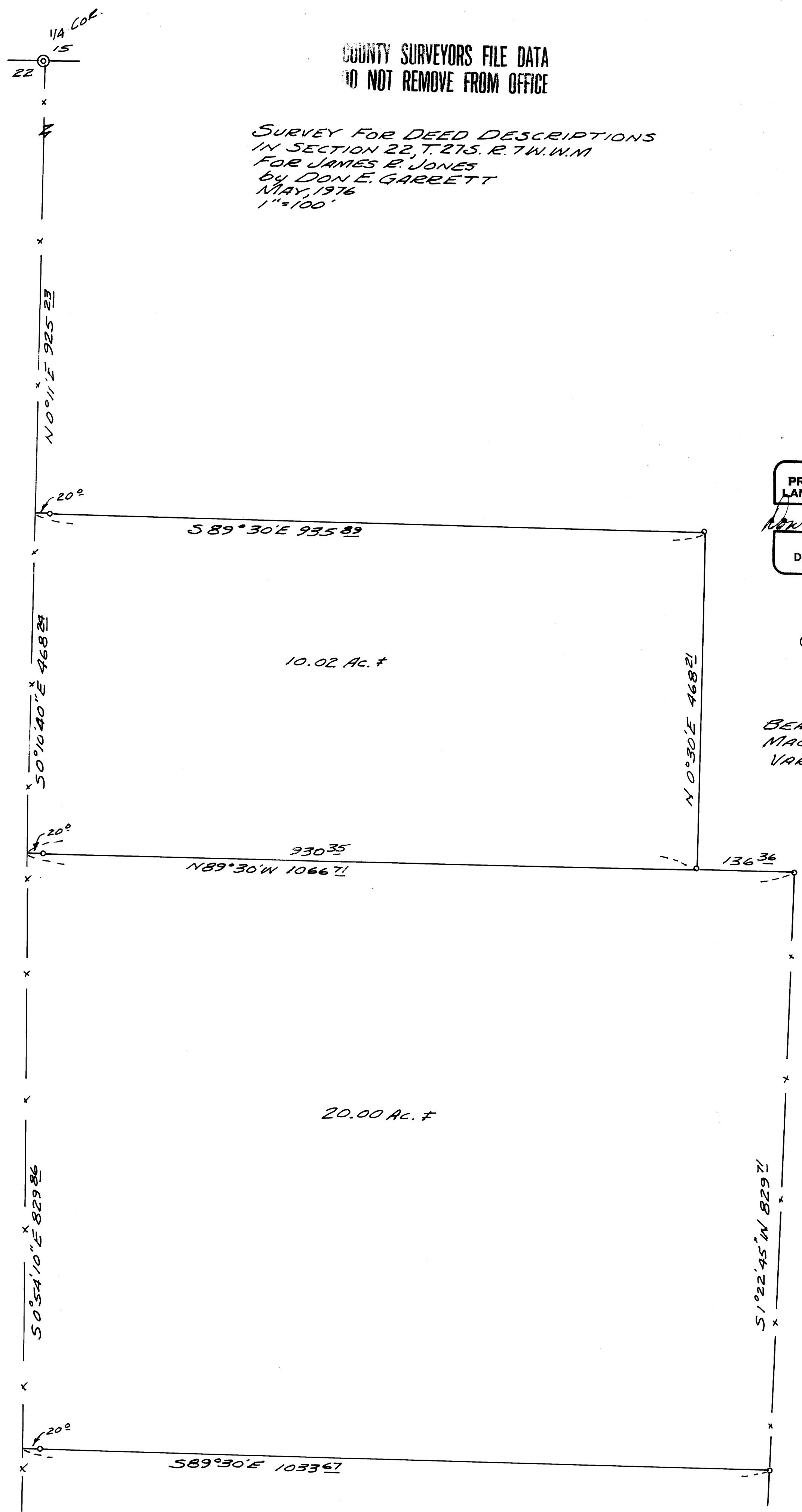


COUNTY SURVEYORS FILE DATA
DO NOT REMOVE FROM OFFICE

FILED *J*
RECEIVED *lt*
JUN 10 1976
COUNTY SURVEYOR
DOUGLAS COUNTY, ORE.
J

SURVEY FOR DEED DESCRIPTIONS
IN SECTION 22, T. 27S. R. 7W. W. 1/4
FOR JAMES R. JONES
BY DON E. GARRETT
MAY, 1976
1"=100'



REGISTERED
PROFESSIONAL
LAND SURVEYOR
Don E. Garrett
OREGON
JULY 14, 1961
DON E. GARRETT
544

o - SET 5/8" IRON ROD
⊙ - FOUND Co. SURV.
BRASS CAP
15" B. OAK S 23° W 48'
16" MADRONE N 3° W 29'
BEARINGS BASED ON
MAGNETIC OBSERVATION
VAR. 19° 45'