

77-00-41
 COUNTY SURVEYORS FILE
 DO NOT REMOVE FROM OFFICE

Subdivision of Section 26, T. 23S., R. 9W., W.M.
 Douglas County, Oregon

FILED ✓
 RECEIVED lt
 JUN 10 1976

June 7, 1976

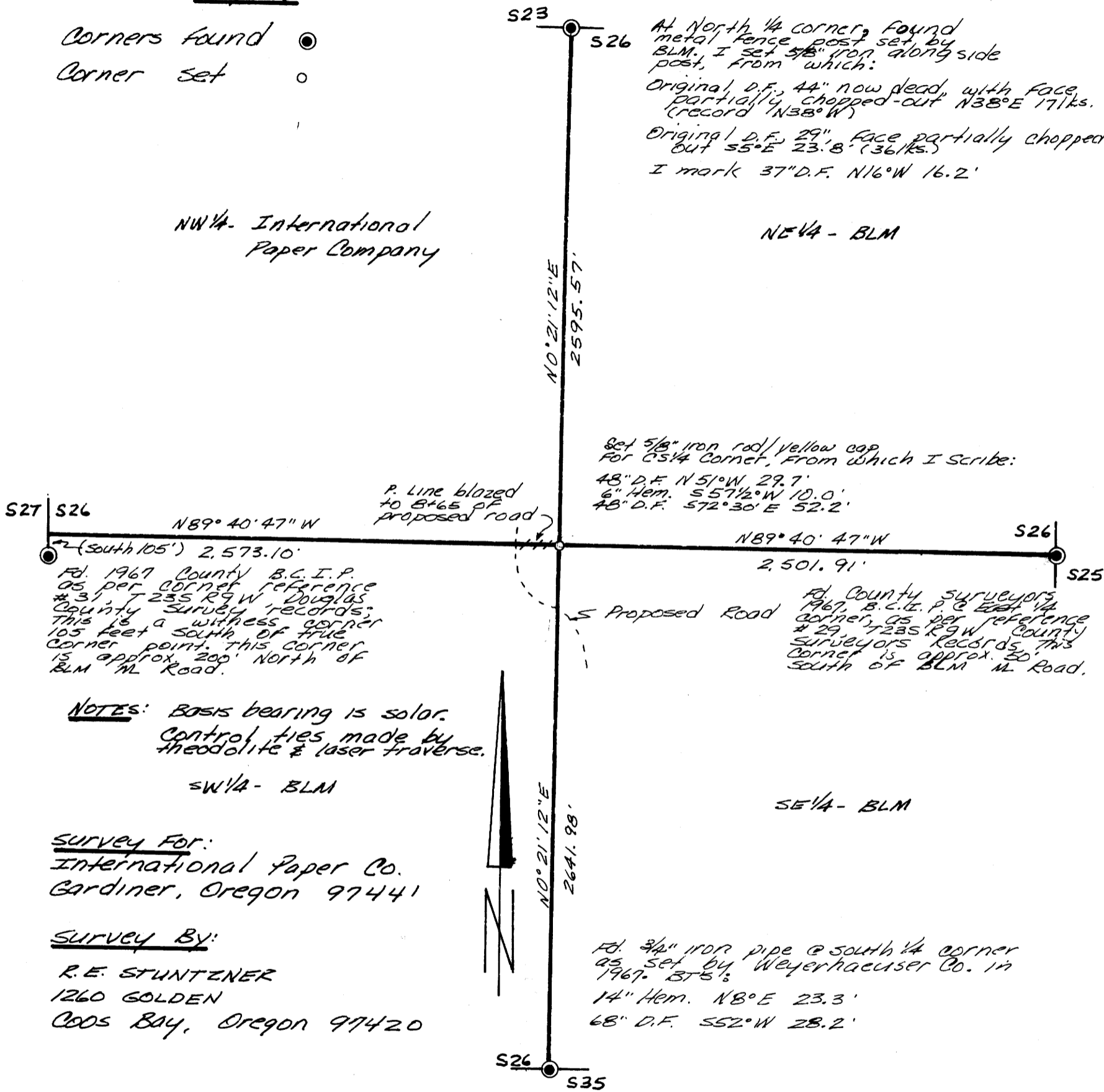
Scale 1" = 600'
 COUNTY SURVEYOR
 DOUGLAS COUNTY, ORE.

Legend

- Corners found ●
- Corner set ○

NW 1/4 - International Paper Company

NE 1/4 - BLM



At North 1/4 corner, found metal fence post set by BLM. I set 5/8" iron along side post, from which:
 Original D.F., 44" now dead with face, partially chopped-out N38° E 17' k.s. (record N38° W)
 Original D.F., 29" face partially chopped-out 55° E 23.8' (36' k.s.)
 I mark 37" D.F. N16° W 16.2'

Set 5/8" iron rod/yellow cap for S26 corner, from which I scribe:
 48" D.F. N51° W 29.7'
 6" Hem. S57 1/2° W 10.0'
 48" D.F. S72° 30' E 52.2'

Ed. 1967 County B.C.I.P. as per corner reference #31, T 23S R9W Douglas County Survey records. This is a witness corner 105 feet south of true corner point. This corner is approx 200' North of BLM M Road.

Ed. County Surveyors 1967, B.C.I.P. & East 1/4 corner, as per reference #29, T23S R9W County Surveyors Records. This corner is approx 50' south of BLM M Road.

NOTES: Basis bearing is solar.
 Control ties made by theodolite & laser traverse.

SW 1/4 - BLM

SE 1/4 - BLM

Survey For:
 International Paper Co.
 Gardiner, Oregon 97441

Survey By:
 R.E. STUNTZNER
 1260 GOLDEN
 Coos Bay, Oregon 97420

Ed. 3/4" iron pipe @ south 1/4 corner as set by Weyerhaeuser Co. in 1967. 37 1/2';
 14" Hem. N8° E 23.3'
 68" D.F. S52° W 28.2'

