

COUNTY SURVEYORS FILE DATA  
DO NOT REMOVE FROM OFFICE

FILED  
RECEIVED

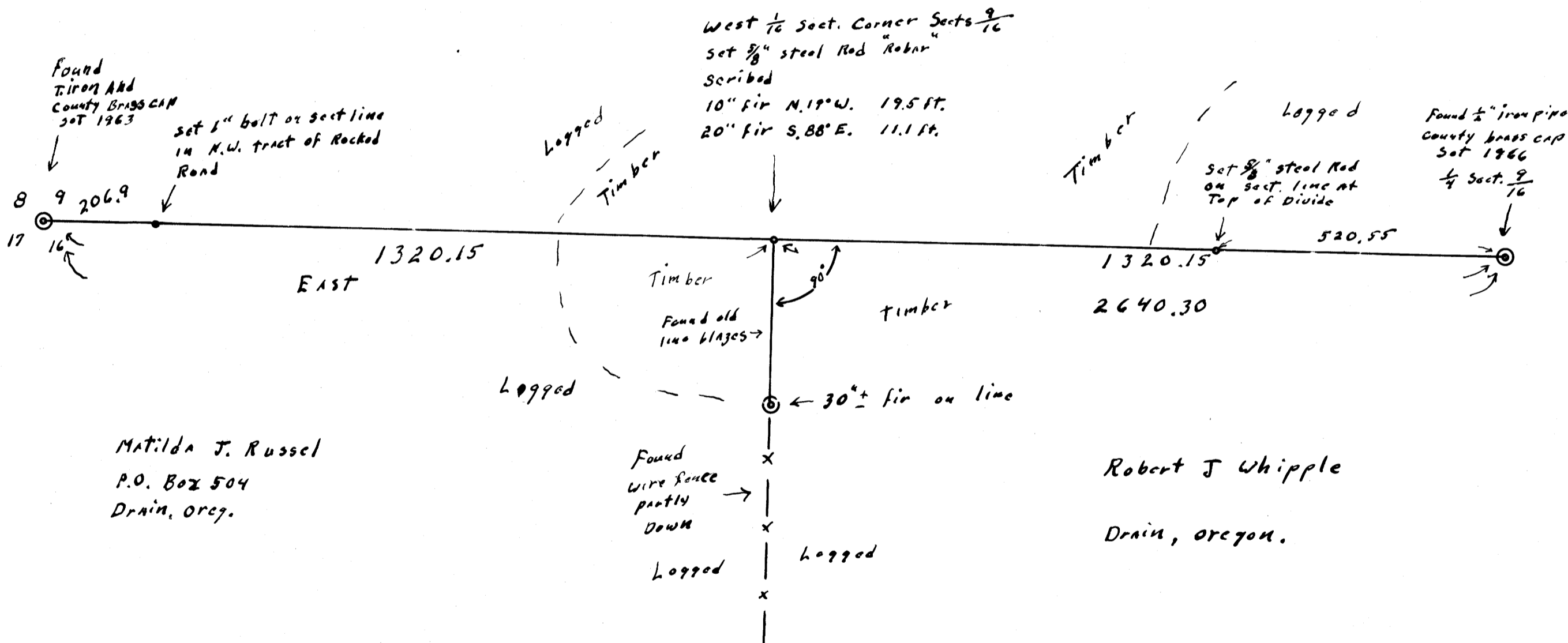
MAY 25 1976

COUNTY SURVEYOR  
DOUGLAS COUNTY, ORE.

REGISTERED  
OREGON  
LAND SURVEYOR  
Wilford N. Haines  
MAY 7, 1948  
WILFORD N. HAINES  
239

Sect. 16, T. 22 S., R. 4 W. W.M.  
survey to Establish line + corners  
for  
Matilda J. Russel + "Bob" Whipple  
Scale 1" = 200' May 14, 1976

North ↑  
Based on West  
80r sect line  $\frac{9}{16}$  West  $\frac{1}{2}$   
⊙ Monuments Found  
○ Monuments Set



Matilda J. Russel  
P.O. Box 504  
Drain, Ore.

Robert J Whipple  
Drain, Oregon.

MAP FILE No. 60-24

FILE No. 60-24