

# SURVEY TO SET PROPERTY CORNERS IN D.L.C. NO. 53, SEC. 36, T26S, R6W, W.M.

Surveyed for Leighton Cornish by Victor M. McLind

May 1976

Scale: 1" = 100'

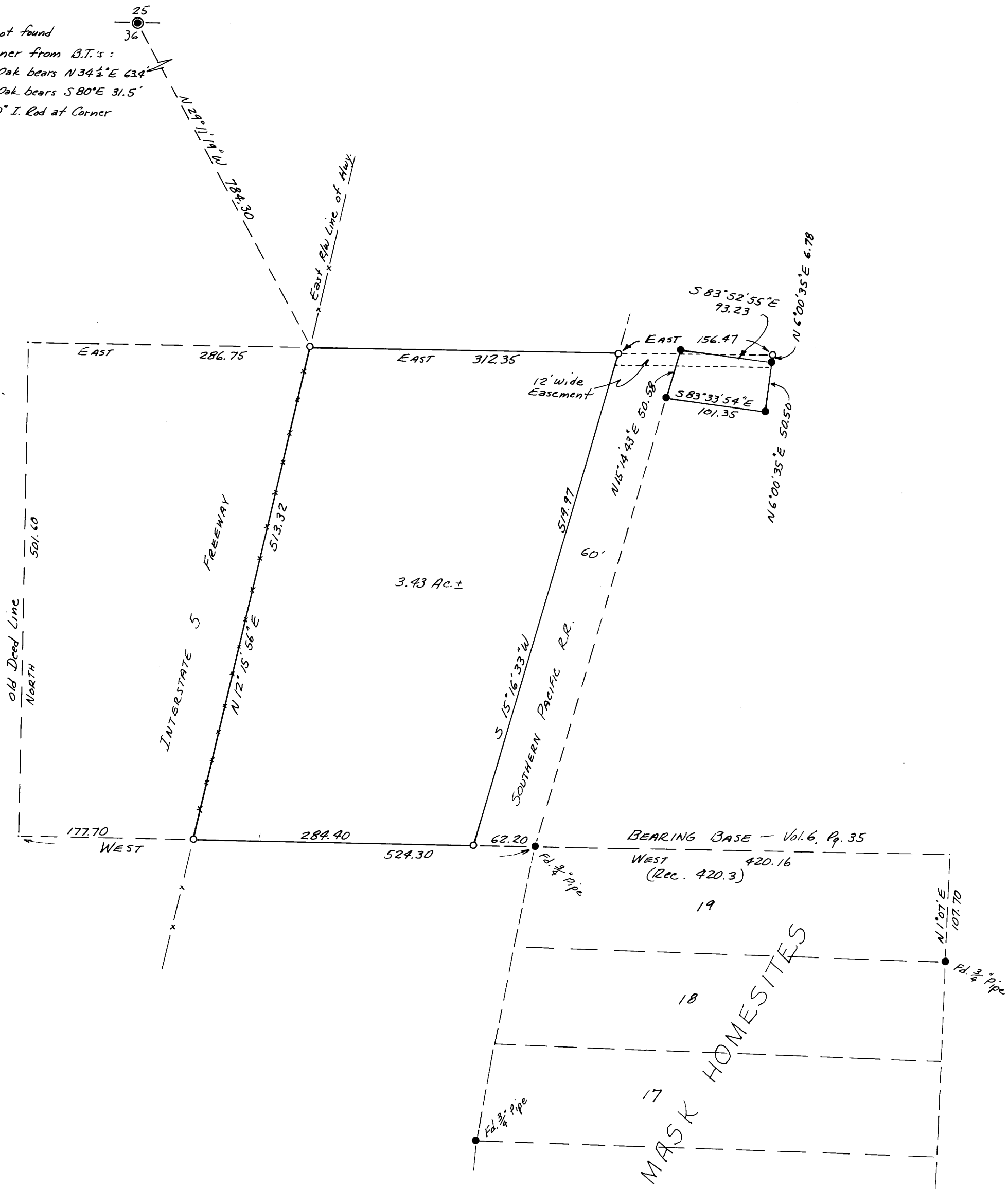
FILED  
RECEIVED 29

MAY 13 1976

COUNTY SURVEYOR  
DOUGLAS COUNTY, MISSOURI

- ~ Indicates Set  $\frac{5}{8}$ " x 30" Iron Rod
- ~ Indicates Found  $\frac{3}{4}$ " Iron Rod unless otherwise noted

\* Corner between Sections  
25 & 36.  
Brass Cap not found  
Reset Corner from B.T.'s:  
A 10" W. Oak bears N 34 $\frac{1}{2}$ ° E 63.4'  
A 8" W. Oak bears S 80° E 31.5'  
Set  $\frac{5}{8}$ " x 30" I. Rod at Corner



Victor M. McLind