

COUNTY SURVEYORS FILE DATA
DO NOT REMOVE FROM OFFICE

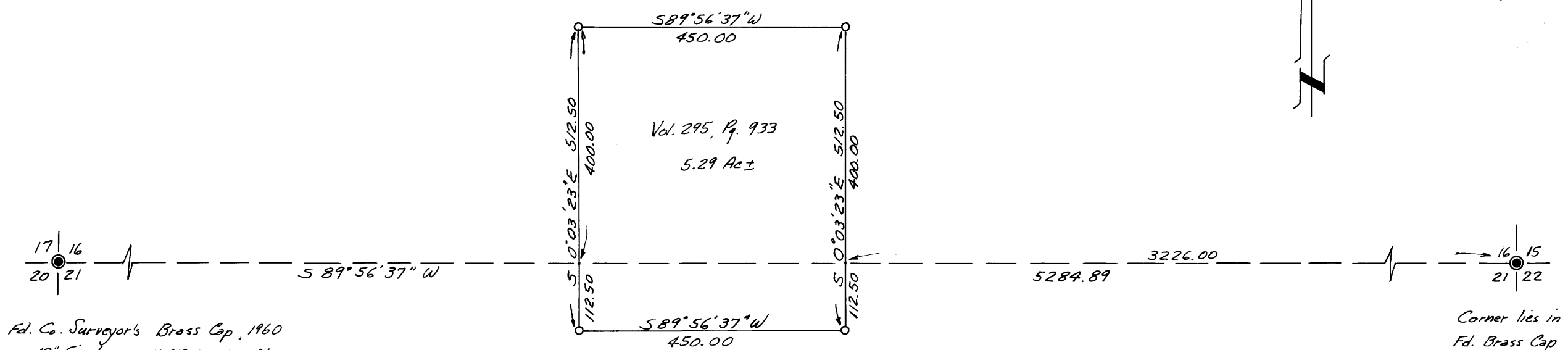
FILE # ✓
RECORDED 7/4
MAY 12 1976
COUNTY SURVEYOR
DOUGLAS COUNTY, IOWA
✓

MAP FILE M60 - 15

SURVEY TO SET DEED CORNERS
IN SECTIONS 16 & 21, T27S, R7W, W.M.
Surveyed for Morgan & Engle, Inc. by Victor M. McLind
Scale: 1" = 200' May 1976

Bearings are based on the Section Line between Sections 16 & 21
as per M 38-8

o ~ Indicates Set $\frac{5}{8}$ " x 30" Iron Rod



Fd. Co. Surveyor's Brass Cap, 1960
12" Fir bears N41°W, 31.0 ft.
12" Fir bears N81°E, 22.4 ft.
24" W. Oak bears S64°E, 22.5 ft.

Corner lies in Co. Rd.
Fd. Brass Cap Witness Corner
which bears S89°56'37" W 32.00
feet from Sec. Corner.
B.T.'s as per Co. Surveyor's records.

Victor M. McLind

MAP FILE M60 - 15