

MAP FILE M60 - 14

APPROX.
N 1/4 COR. SEC. 19
LOCATION

T23S, R7W

18 | 17
19 | 20

FO. BRASS CAP
B.T.S PER RECORD

FILED ✓
MAY 12 1976

COUNTY OF ...
STATE OF ...

✓

N 59° 48' 07" E
3078.52'

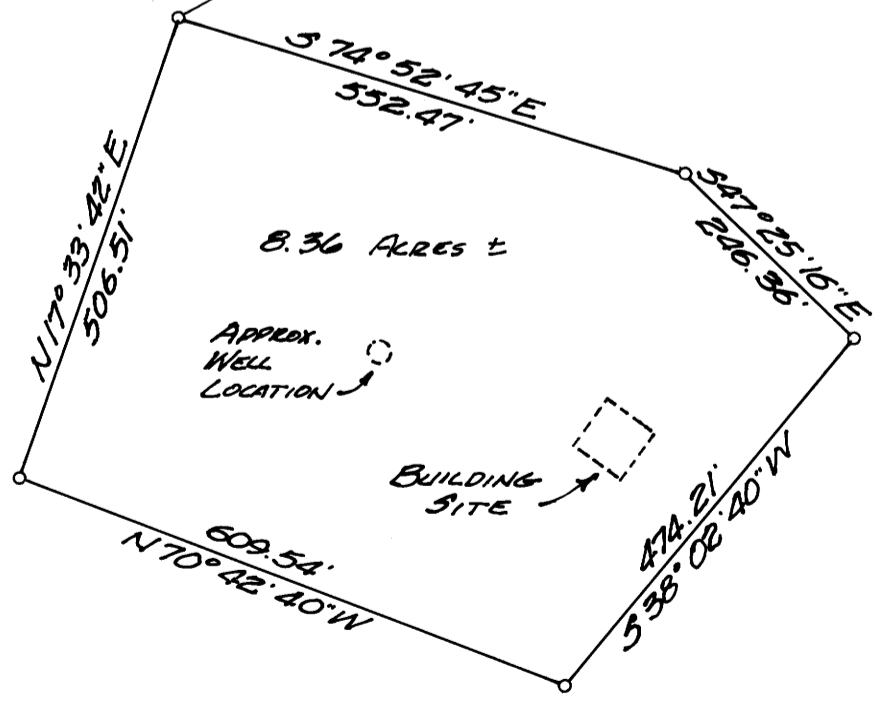
APPROXIMATE
LOCATION OF S.W.
CORNER GOVT. LOT 7

SURVEY TO CORRECT DEED DESCRIPTION

SURVEY IN SEC. 19, T23S, R7W, W.M.
SURVEY FOR MIKE MADISON
SURVEY BY BHW ENG. & SURVEYING, INC.
MAY, 1976 SCALE: 1" = 200'

o — SET 3/4" IRON PIPE

BEARINGS BASED ON SOLAR OBSERVATION
TAKEN ON APRIL 24, 1976.



REGISTERED
PROFESSIONAL
LAND SURVEYOR

Roman E. Worn

CREATED
BY
ROMAN E. WORN
1976



WISCONSIN SURVEYORS FILE THIS
DO NOT REMOVE FROM OFFICE

MAP FILE M60 - 14