

MAP FILE M 60-12

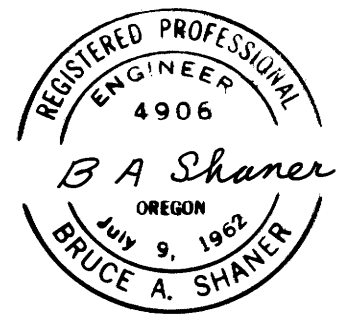
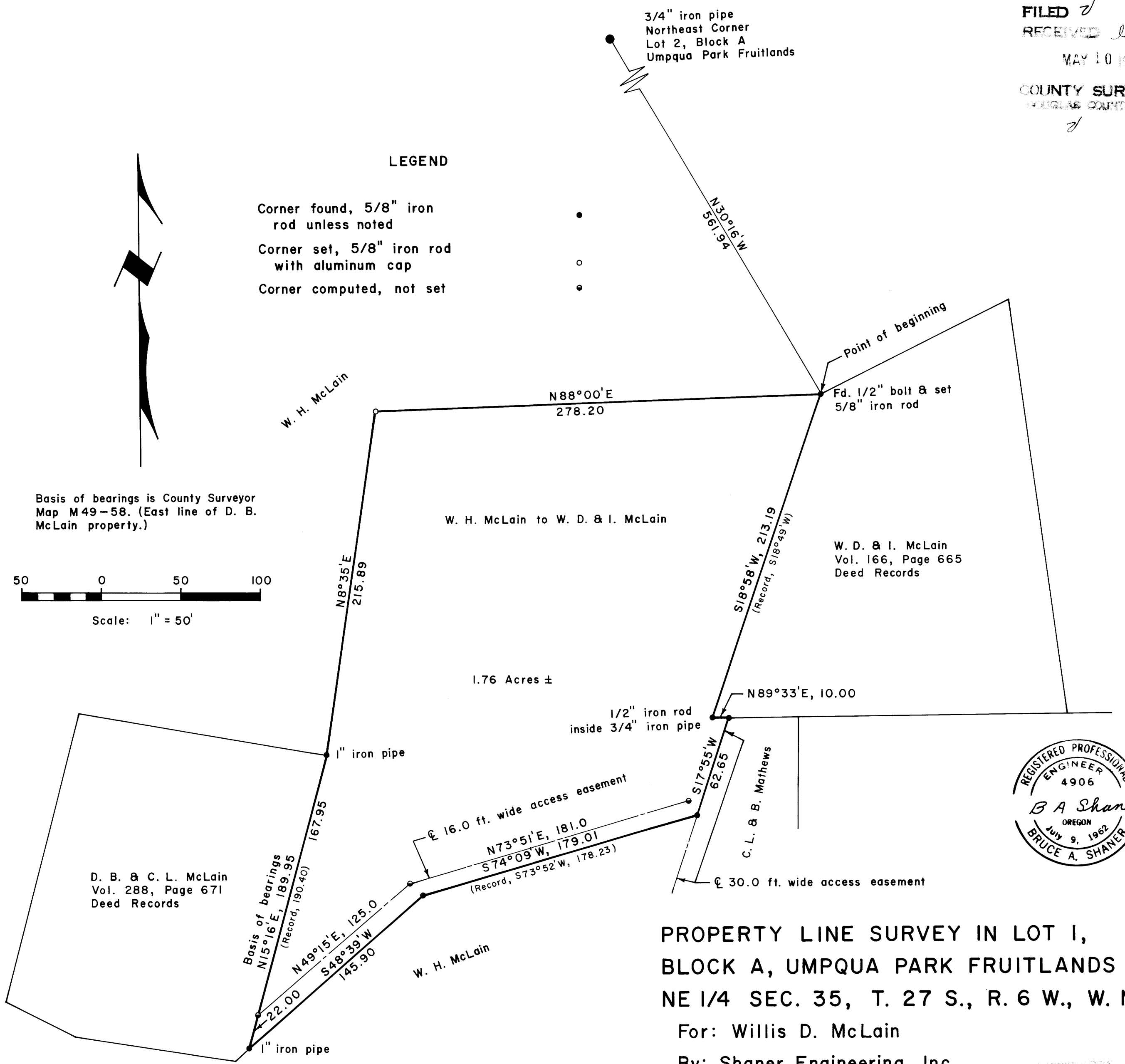
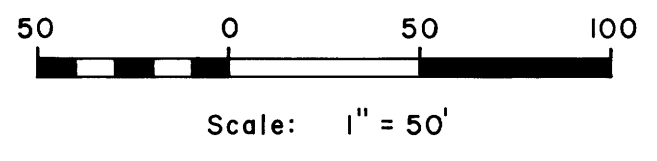
FILED ✓
RECEIVED *It*
MAY 10 1976
COUNTY SURVEYOR
DOUGLAS COUNTY, ORE.
✓

LEGEND

- Corner found, 5/8" iron rod unless noted •
- Corner set, 5/8" iron rod with aluminum cap ○
- Corner computed, not set ◦



Basis of bearings is County Surveyor Map M 49-58. (East line of D. B. McLain property.)



PROPERTY LINE SURVEY IN LOT 1,
BLOCK A, UMPQUA PARK FRUITLANDS
NE 1/4 SEC. 35, T. 27 S., R. 6 W., W. M.

For: Willis D. McLain
By: Shaner Engineering, Inc.

May 8, 1976

DO NOT REMOVE FROM FILE

MAP FILE M 60-12