

08 - 25W

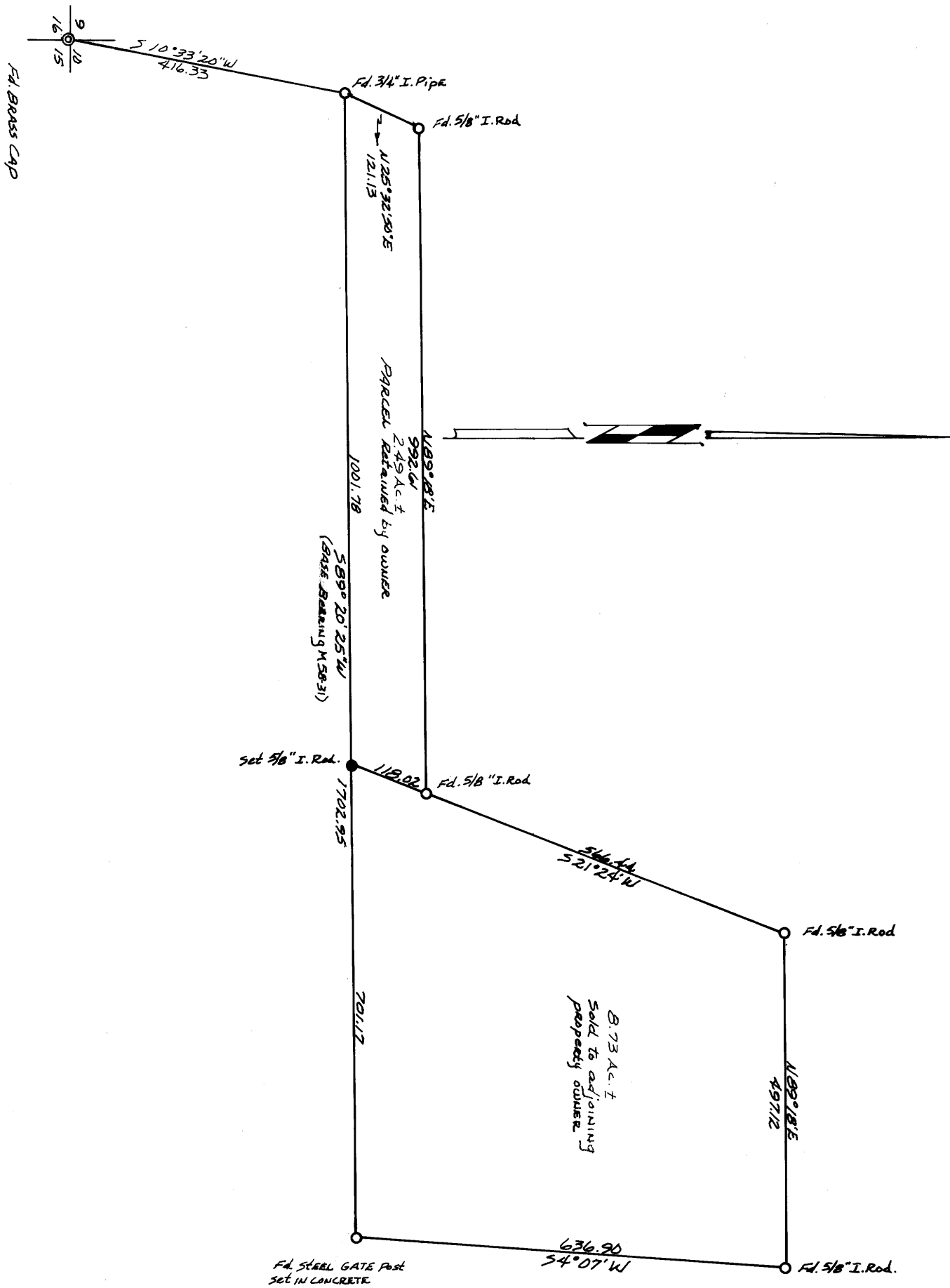
SURVEY IN SEC. 10, TWP. 27S, RNG. 6W, WIL. MER.
Surveyed for Velma Metzker by Don E. Garrett
May, 1976

Parcel depicted is parcel 2 as per M58-31

Scale 1" = 200'

COUNTY SURVEYORS FILE DATA
DO NOT REMOVE FROM OFFICE

FILED
JUL 14 1976
CLATSOP COUNTY
RECORDS & CLERK
ASTORIA, OREGON



REGISTERED
PROFESSIONAL
LAND SURVEYOR

Don E. Garrett

OREGON
JULY 14, 1961
DON E. GARRETT
544