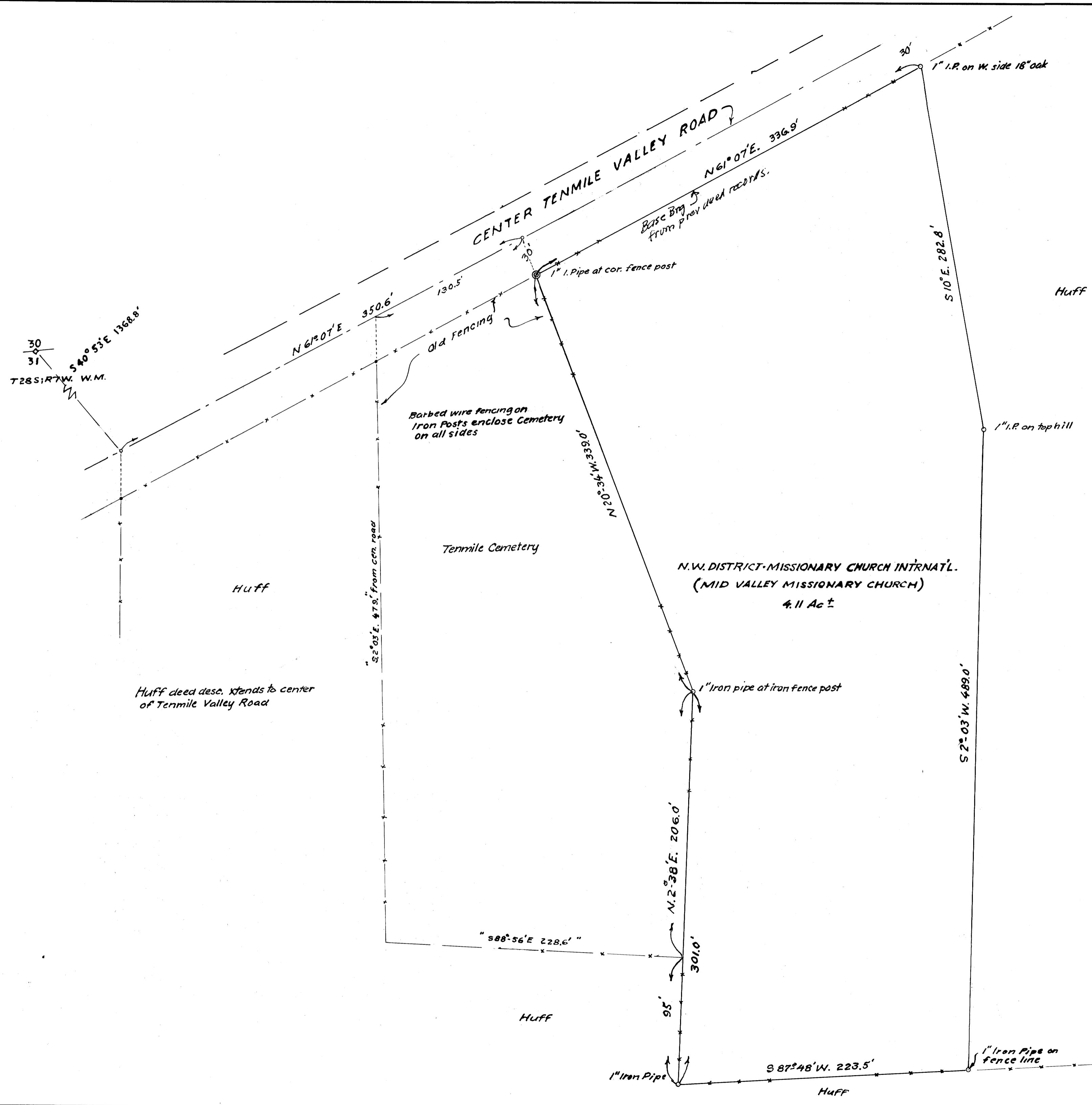


FILED *d*
 RECEIVED *mnc*
 MAY 3 1976
 COUNTY SURVEYOR
 DOUGLAS COUNTY, ORE.
d

MAP FILE 2-59-79



COUNTY SURVEYORS FILE DATA
 DO NOT REMOVE FROM OFFICE

SHIRLEY HUFF & REUBEN HUFF TO N.W. DIST. MISSIONARY CHURCH INTERNATIONAL.		
SCALE: 1" = 50 ft.	APPROVED BY:	DRAWN BY <i>AB</i>
DATE: APR. 1976		REVISED
IN NE 4 SEC. 31, T28S; R7W; W1L. MER.		
DOUGLAS COUNTY, ORE		DRAWING NUMBER

MAP FILE 2-59-79