

COUNTY SURVEYORS FILE DATA
DO NOT REMOVE FROM OFFICE

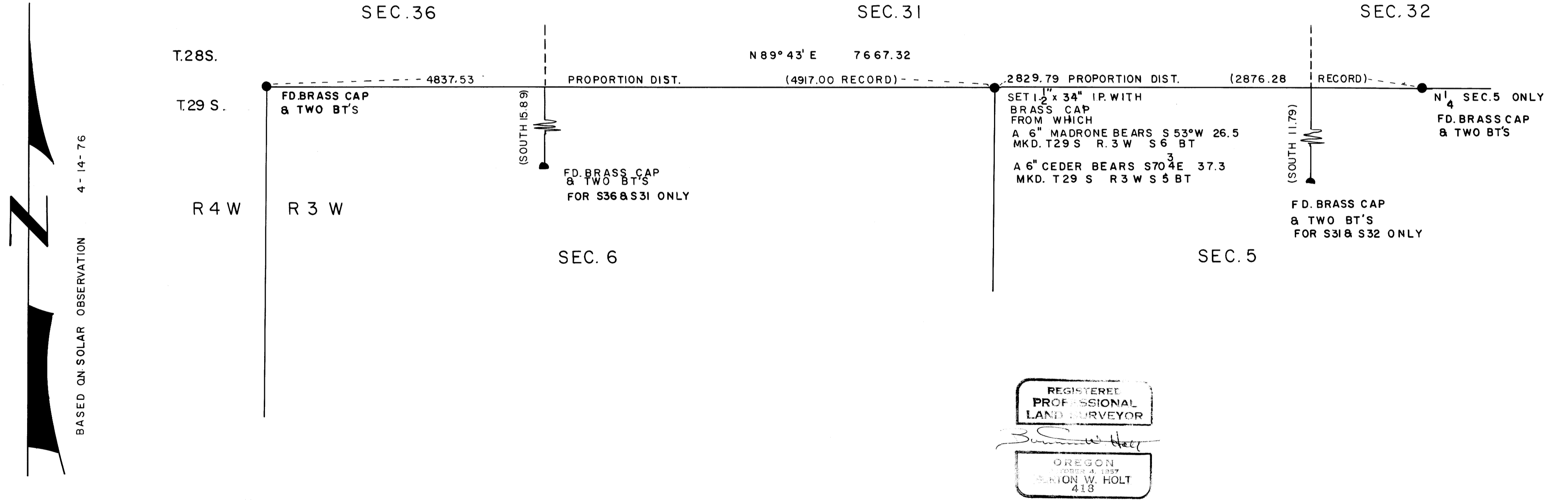
FILED *d*
RECEIVED *lt*
APR 30 1976
COUNTY SURVEYOR
DOUGLAS COUNTY, ORE.
d

SURVEY TO ESTABLISH SECTION CORNER
IN SECTIONS 5 & 6 T.29 S., R.3 W., W.M.,

FOR SUN STUDS INC.
BY BURTON W. HOLT

SCALE 1" = 500'

APRIL 1976



BASED ON SOLAR OBSERVATION 4-14-76

REGISTERED
PROFESSIONAL
LAND SURVEYOR
Burton W. Holt
OREGON
NUMBER 4, 1957
BURTON W. HOLT
413

M59-77

MAP FILE M59-77