

FILED
RECEIVED *he*

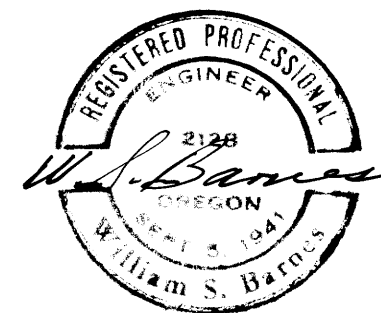
APR 14 1976

COUNTY SURVEYOR
DOUGLAS COUNTY, ORE.



COUNTY SURVEYORS FILE
DO NOT REMOVE FROM OFFICE

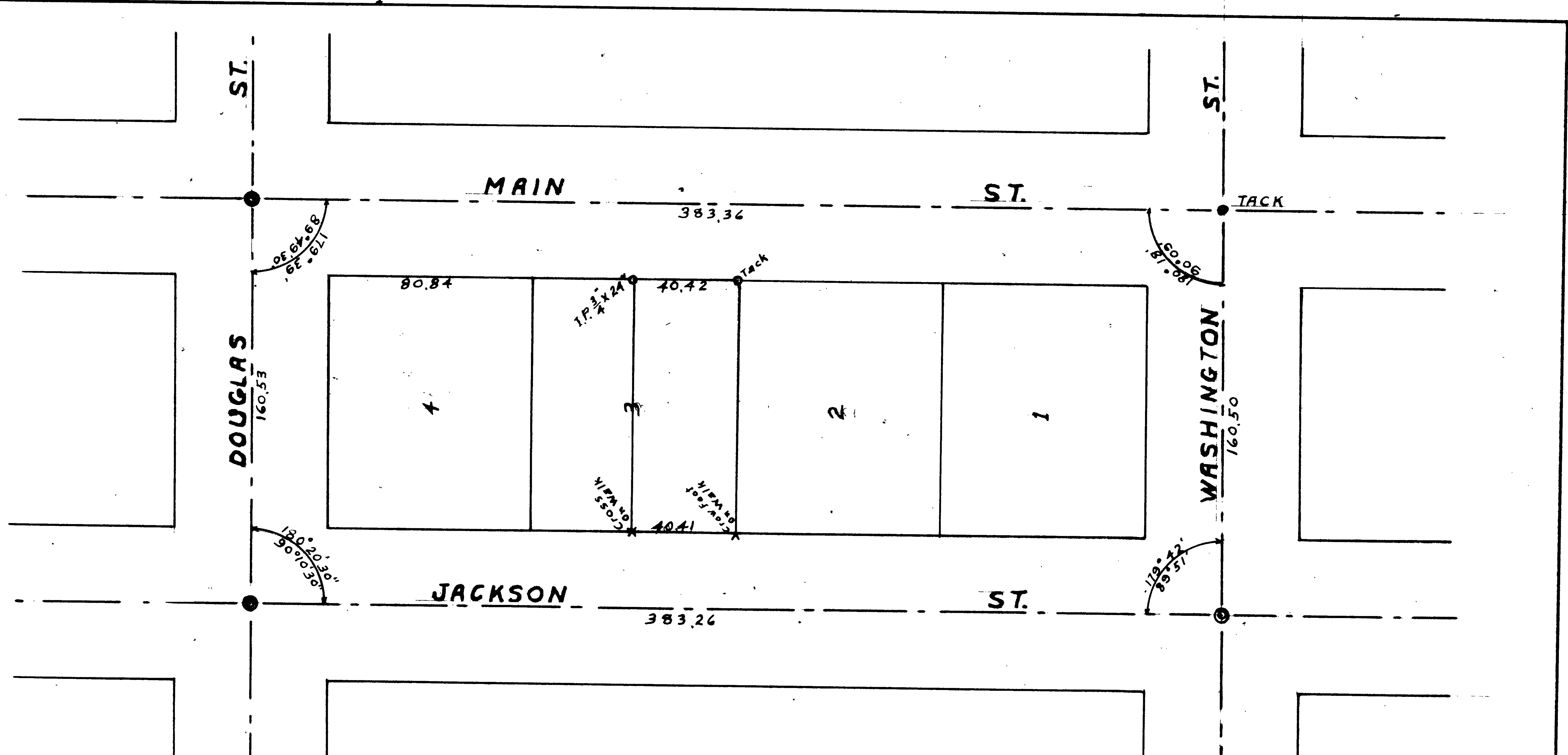
Reference C.S. Map 38-69



SURVEY OF S 1/2 LOT 3,
BLOCK 19, ROSEBURG, ORE.
SEC. 19, T27S, R5W, W.M.
SURVEYED FOR - JUDD'S FURNITURE
SURVEYED BY - W.S. BARNES
SCALE 1" = 40' APRIL 1976

MAP FILE M59-69

MAP FILE M59-69



COUNTY SURVEYOR'S OFFICE
DOUGLAS COUNTY OREGON

SOUTH 1/2 LOT 3
BLOCK 19 ROSEBURG ORE.

BEN. B. IRVING COUNTY SURVEYOR
Surveyed by N. E. RICHARDSON
JANUARY 10, 1946
SCALE 1" = 40'

REGISTERED
OREGON
LAND SURVEYOR

N. E. Richardson
JULY 7 1944
N. E. RICHARDSON
35

COUNTY SURVEYORS FILE DATA
DO NOT REMOVE FROM OFFICE