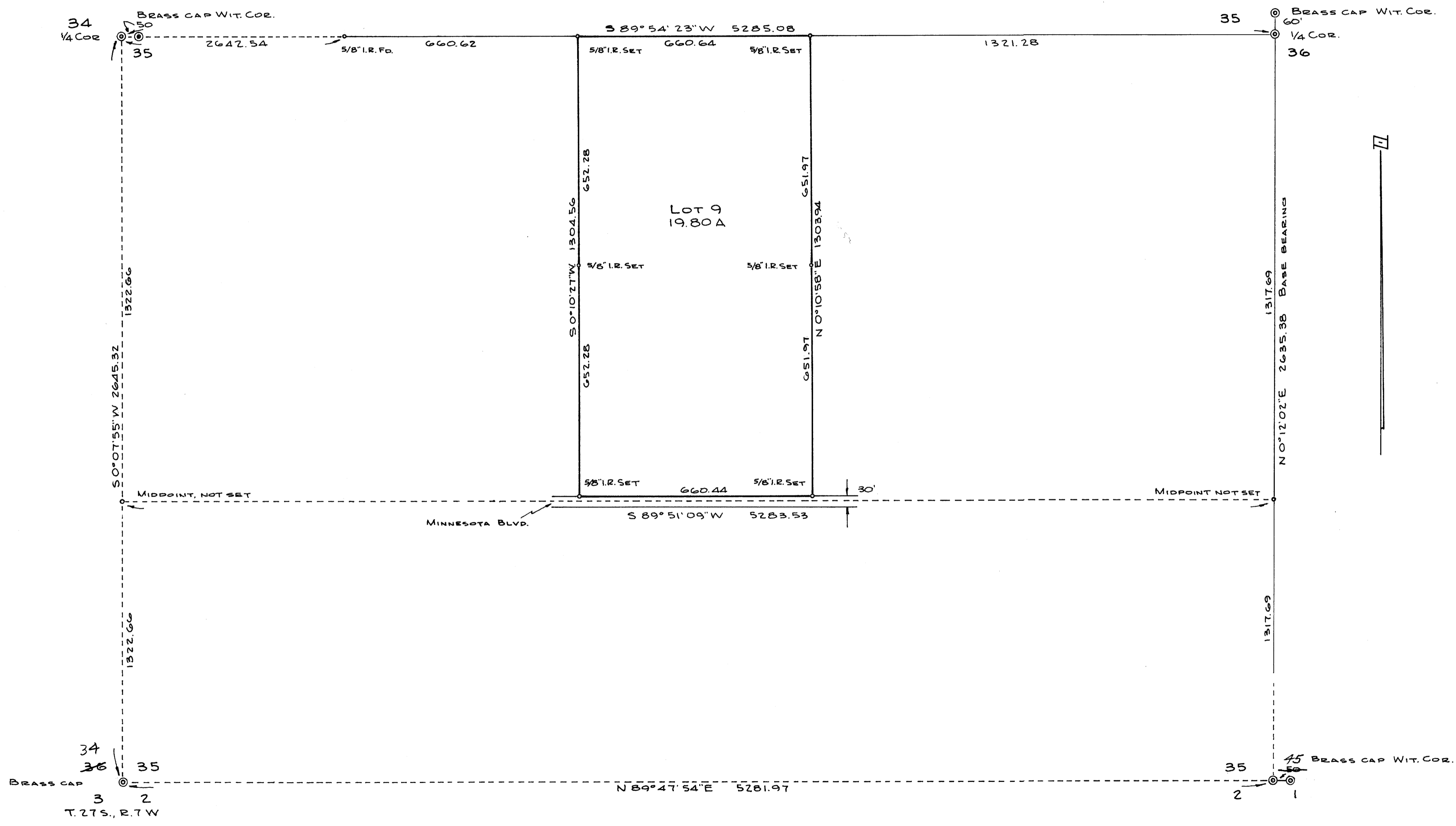


COUNTY SURVEYORS FILE DRAFT  
DO NOT REMOVE FROM OFFICE

FILED  
RECEIVED  
APR 20 1976  
COUNTY SURVEYOR  
DOUGLAS COUNTY, ORE.

SURVEY TO DETERMINE BOUNDARIES  
LOT 9, EDEN ORCHARDS  
SECTION 35, T. 26 S., R. 7 W., W. M.  
SURVEYED FOR EMMA LEAH HANDY  
SURVEYED BY R. H. GEE APRIL, 1974  
SCALE 1" = 200'



MAP FILE M. 5.9 - 66

MAP FILE M. 5.9 - 66