

159-654

COUNTY SURVEYORS FILE DATA
DO NOT REMOVE FROM OFFICE

FILED &
RECEIVED *mg*
JAN 14 1976

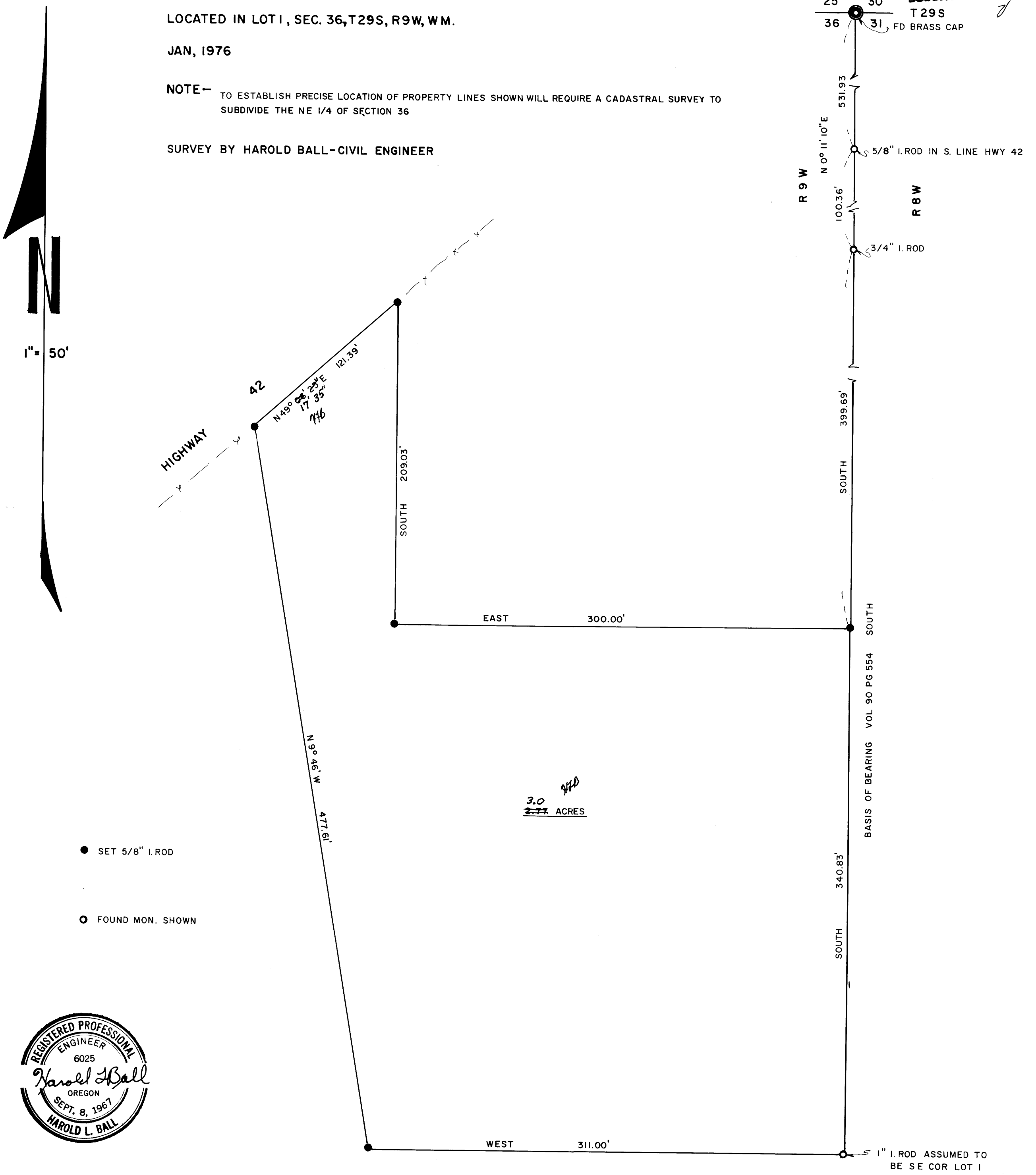
COUNTY SURVEYOR
DOUGLAS COUNTY, ORE.

SURVEY FOR C. W. GLADE TO ESTABLISH APPROXIMATE LOCATION OF PROPERTY LINES
LOCATED IN LOT 1, SEC. 36, T29S, R9W, WM.

JAN, 1976

NOTE - TO ESTABLISH PRECISE LOCATION OF PROPERTY LINES SHOWN WILL REQUIRE A CADASTRAL SURVEY TO
SUBDIVIDE THE NE 1/4 OF SECTION 36

SURVEY BY HAROLD BALL - CIVIL ENGINEER



- SET 5/8" I. ROD
- FOUND MON. SHOWN



159-6