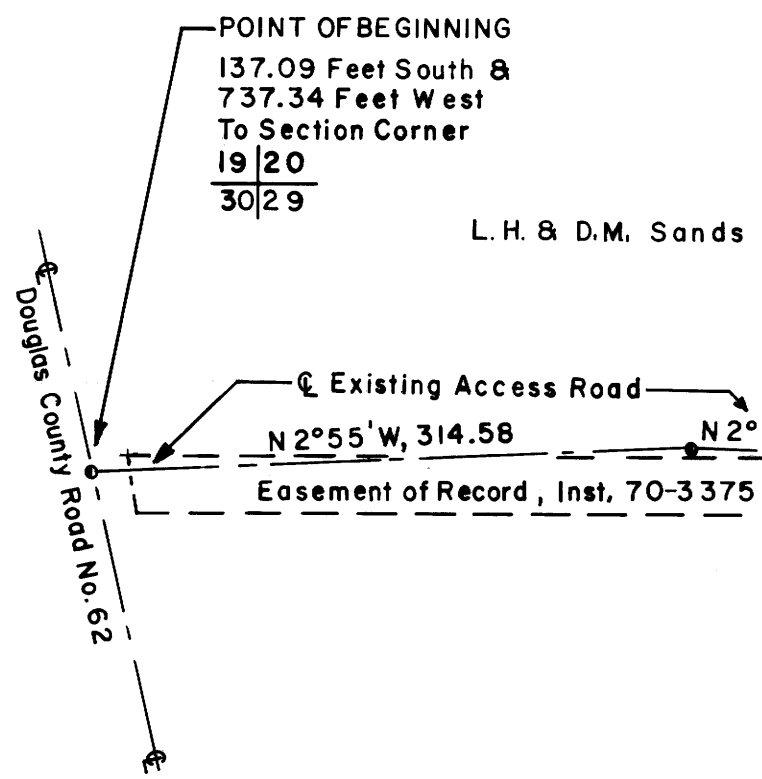


Vol 2 pg 177
FILED DL3
RECEIVED

PAR 1 & 170
COUNTY SURVEYOR
DOUGLAS COUNTY, ORE.

STATE OF OREGON, INTERSTATE HIGHWAY NO. 5

Section Corner
19 | 20
30 | 29
T21S, R4W, W.M.
(Calculated)

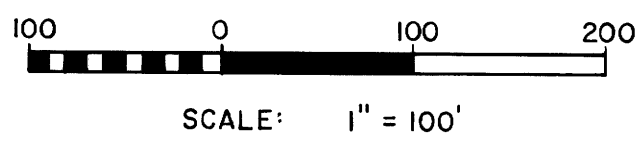


L.H. & D.M. Sands

L.H. & D.M. Sands



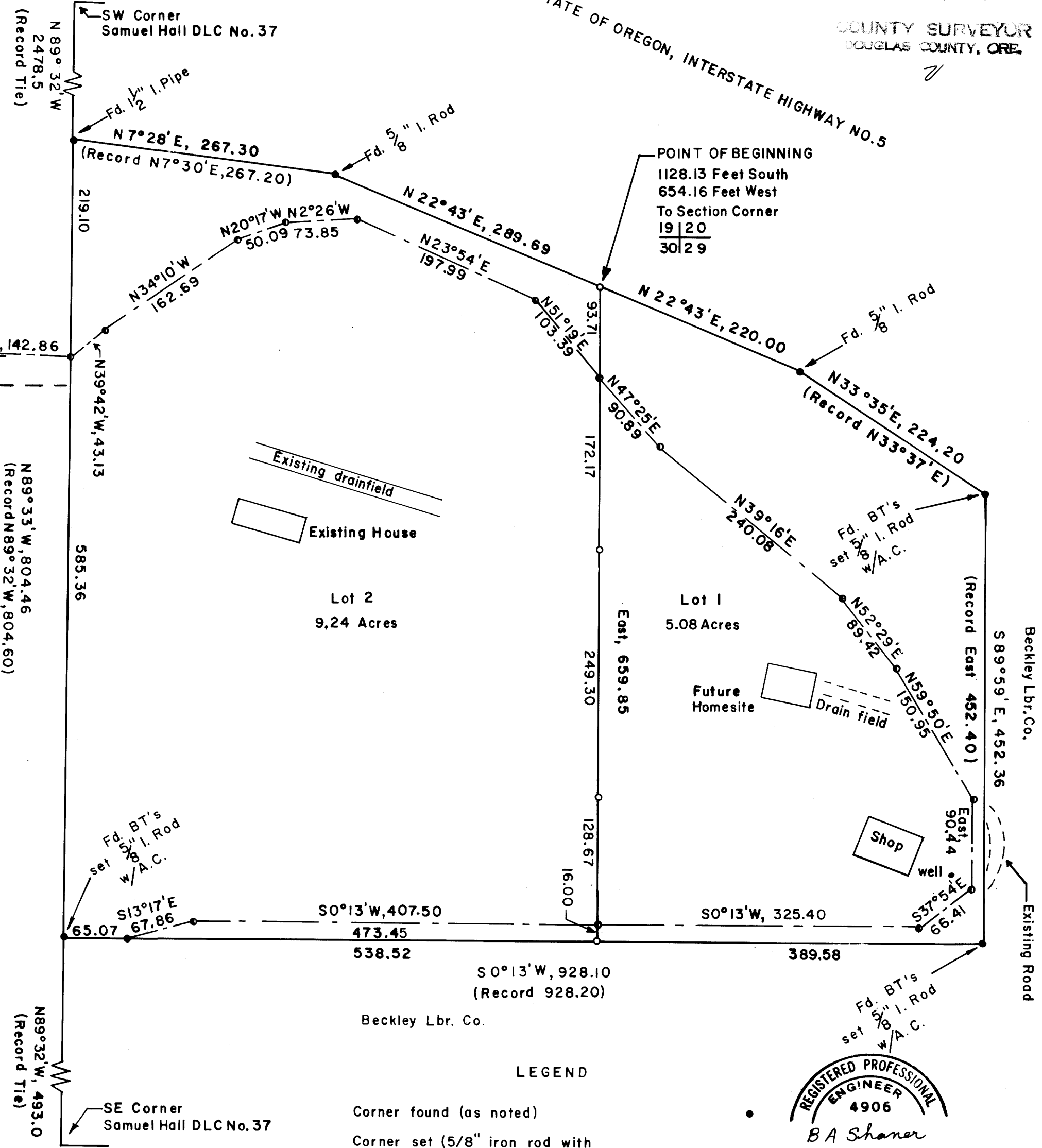
Basis of Bearings:
County Surveyor Map File M23-25



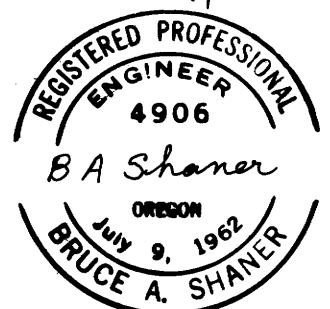
Minor Land Partition in the Samuel Hall D.L.C. No. 37 & the W1/2 SW1/4, Sec. 20, T21S, R4W, W.M.

(Note: Lot 1, at this time, does not have an approved septic tank—drainfield site.)

COUNTY SURVEYORS FILE DO NOT REMOVE FROM OFFICE



- LEGEND
- Corner found (as noted)
 - Corner set (5/8" iron rod with aluminum cap)
 - Corner computed (not set)



February 13, 1976
Page 1 of 2

FILE M23-25 - 53A

MAP FILE M23-25 - 53A